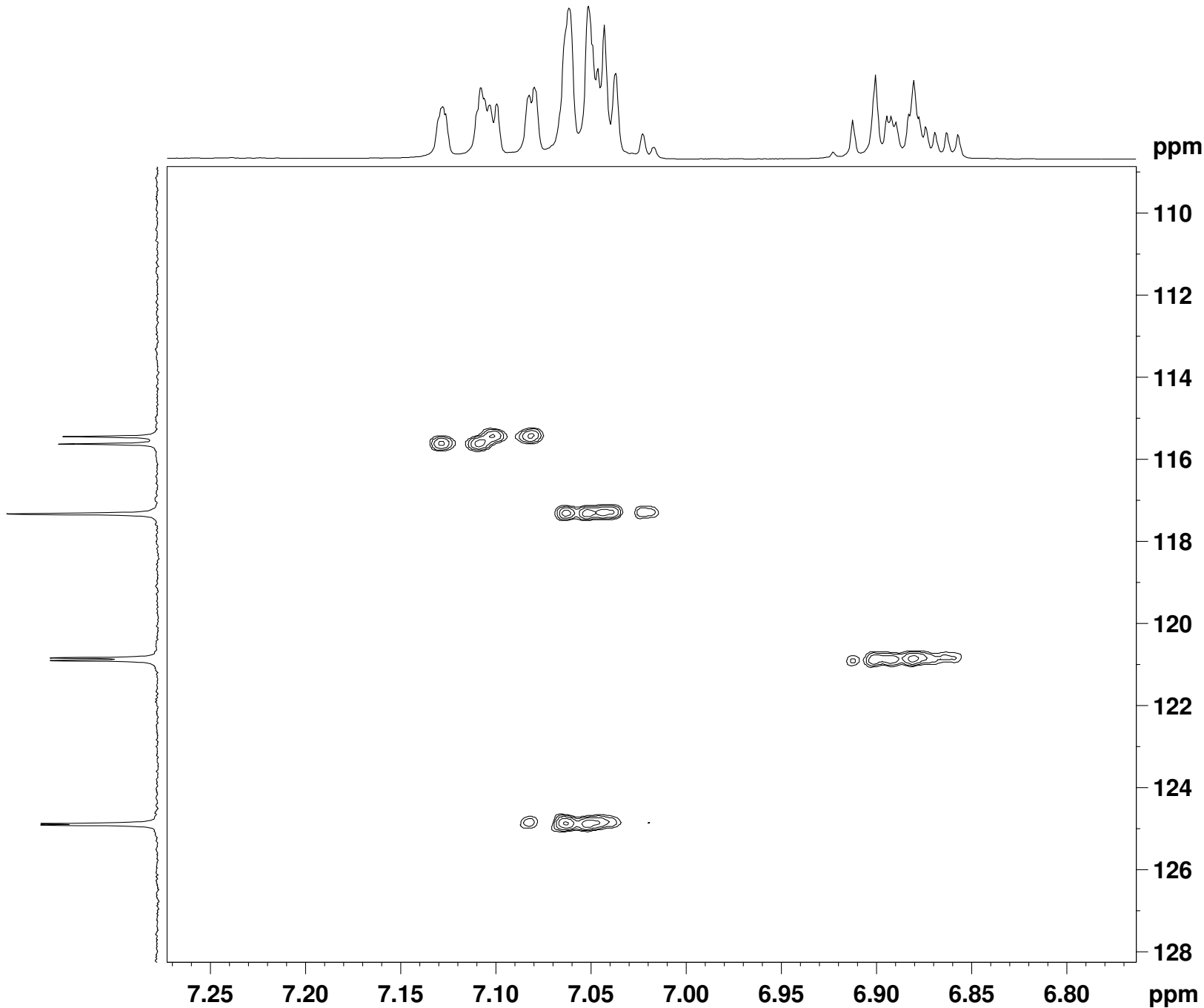


Unknown 58



```
NAME Un_58
EXPNO 4
PROCNO 1
Date_ 20120229
Time 9.24
INSTRUM robinson
PROBHD 5 mm PABBO BB-
PULPROG hsqcedetgp
TD 1536
SOLVENT CDCl3
NS 2
DS 16
SWH 1197.318 Hz
FIDRES 0.779504 Hz
AQ 0.6414836 sec
RG 11585.2
DW 417.600 usec
DE 6.50 usec
TE 298.7 K
CNST2 145.0000000
D0 0.00000300 sec
D1 2.00000000 sec
D4 0.00172414 sec
D11 0.03000000 sec
D13 0.00000400 sec
D16 0.00020000 sec
D21 0.00345000 sec
IN0 0.00008280 sec
ZGOPTNS

===== CHANNEL f1 =====
NUC1 1H
P1 11.20 usec
P2 22.40 usec
P28 1000.00 usec
PL1 0.00 dB
SFO1 400.1426009 MHz

===== CHANNEL f2 =====
CPDPRG2 garp
NUC2 13C
P3 7.60 usec
P4 15.20 usec
PCPD2 65.00 usec
PL2 -2.00 dB
PL12 16.64 dB
SFO2 100.6283630 MHz

===== GRADIENT CHANNEL =====
GPNAM1 SINE.100
GPNAM2 SINE.100
GPZ1 80.00 %
GPZ2 20.10 %
P16 1000.00 usec
ND0 2
TD 256
SFO1 100.6284 MHz
FIDRES 23.584772 Hz
SW 60.000 ppm
FnMODE Echo-Antiecho
SI 2048
SF 400.1400000 MHz
WDW QSINE
SSB 2
LB 0.00 Hz
GB 0
PC 1.40
SI 2048
MC2 echo-antiecho
SF 100.6152830 MHz
WDW QSINE
SSB 2
LB 0.00 Hz
GB 0
```