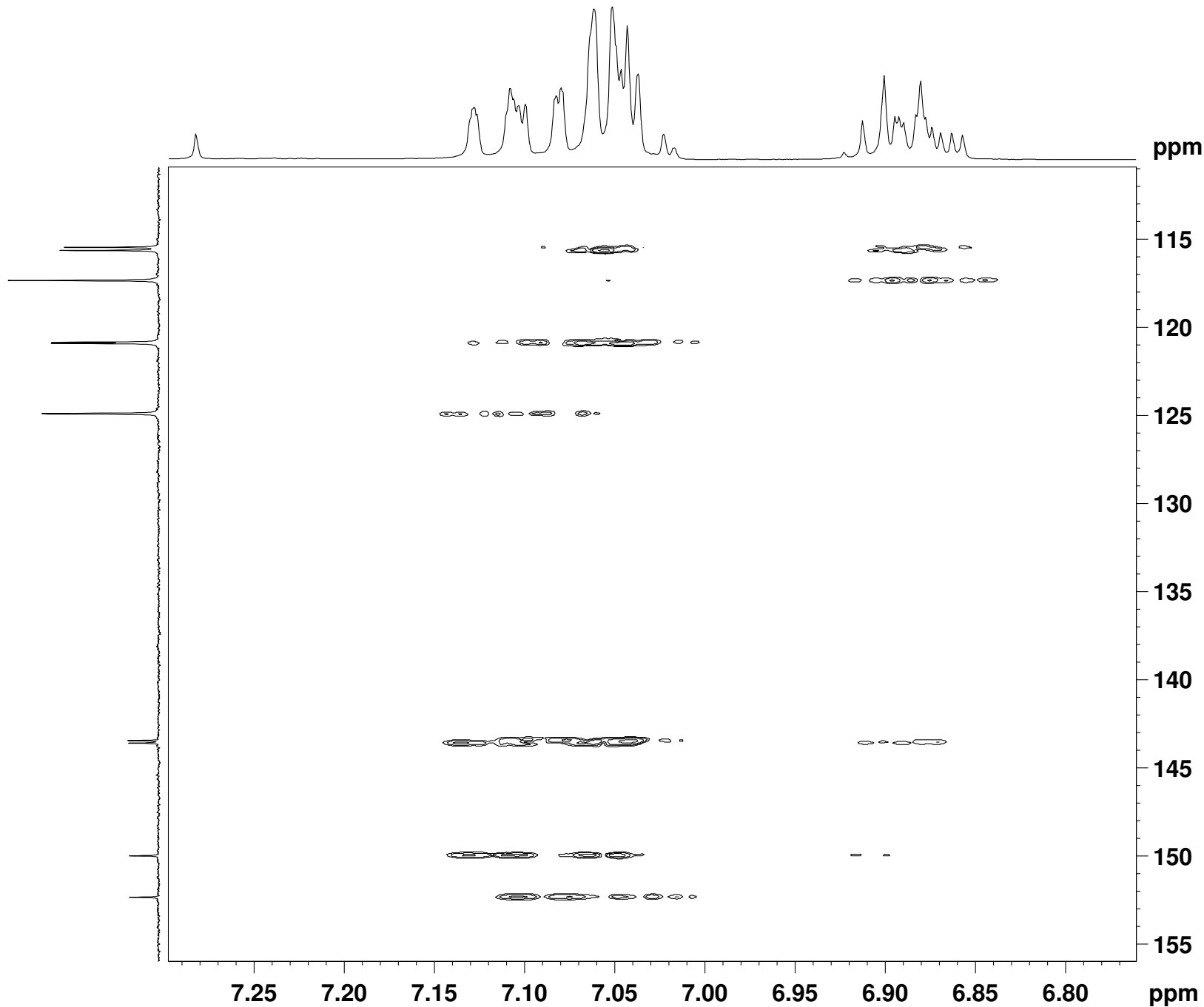


Unknown 58



```
NAME Un_58
EXPNO 5
PROCNO 1
Date_ 20120229
Time 10.32
INSTRUM robinson
PROBHD 5 mm PABBO BB-
PULPROG hmbcetgp13nd
TD 1536
SOLVENT CDC13
NS 2
DS 16
SWH 1197.318 Hz
FIDRES 0.779504 Hz
AQ 0.6414836 sec
RG 16384
DW 417.600 usec
DE 6.50 usec
TE 298.2 K
CNST6 145.0000000
CNST7 165.0000000
CNST13 6.0000000
CNST30 0.5981063
D0 0.00000300 sec
D1 2.00000000 sec
D6 0.08333334 sec
D16 0.00020000 sec
IN0 0.00008280 sec

===== CHANNEL f1 =====
NUC1 1H
P1 11.20 usec
P2 22.40 usec
PL1 0.00 dB
SFO1 400.1426009 MHz

===== CHANNEL f2 =====
NUC2 13C
P3 7.60 usec
P24 2000.00 usec
PL2 -2.00 dB
SFO2 100.6283630 MHz
SP7 12.00 dB
SPNAM7 Crp60comp.4
SPOAL7 0.500
SPOFFS7 0.00 Hz

===== GRADIENT CHANNEL =====
GPNAM1 SINE.100
GPNAM3 SINE.100
GPNAM4 SINE.100
GPNAM5 SINE.100
GPNAM6 SINE.100
GPZ1 80.00 %
GPZ3 14.00 %
GPZ4 -8.00 %
GPZ5 -4.00 %
GPZ6 -2.00 %
P16 1000.00 usec
ND0 2
TD 256
SFO1 100.6284 MHz
FIDRES 23.584772 Hz
SW 60.000 ppm
FnMODE Echo-Antiecho
SI 4096
SF 400.1400000 MHz
WDW QSINE
SSB 2
LB 0.00 Hz
GB 0
PC 1.40
SI 1024
MC2 echo-antiecho
SF 100.6152830 MHz
WDW QSINE
SSB 2
LB 0.00 Hz
GB 0
```