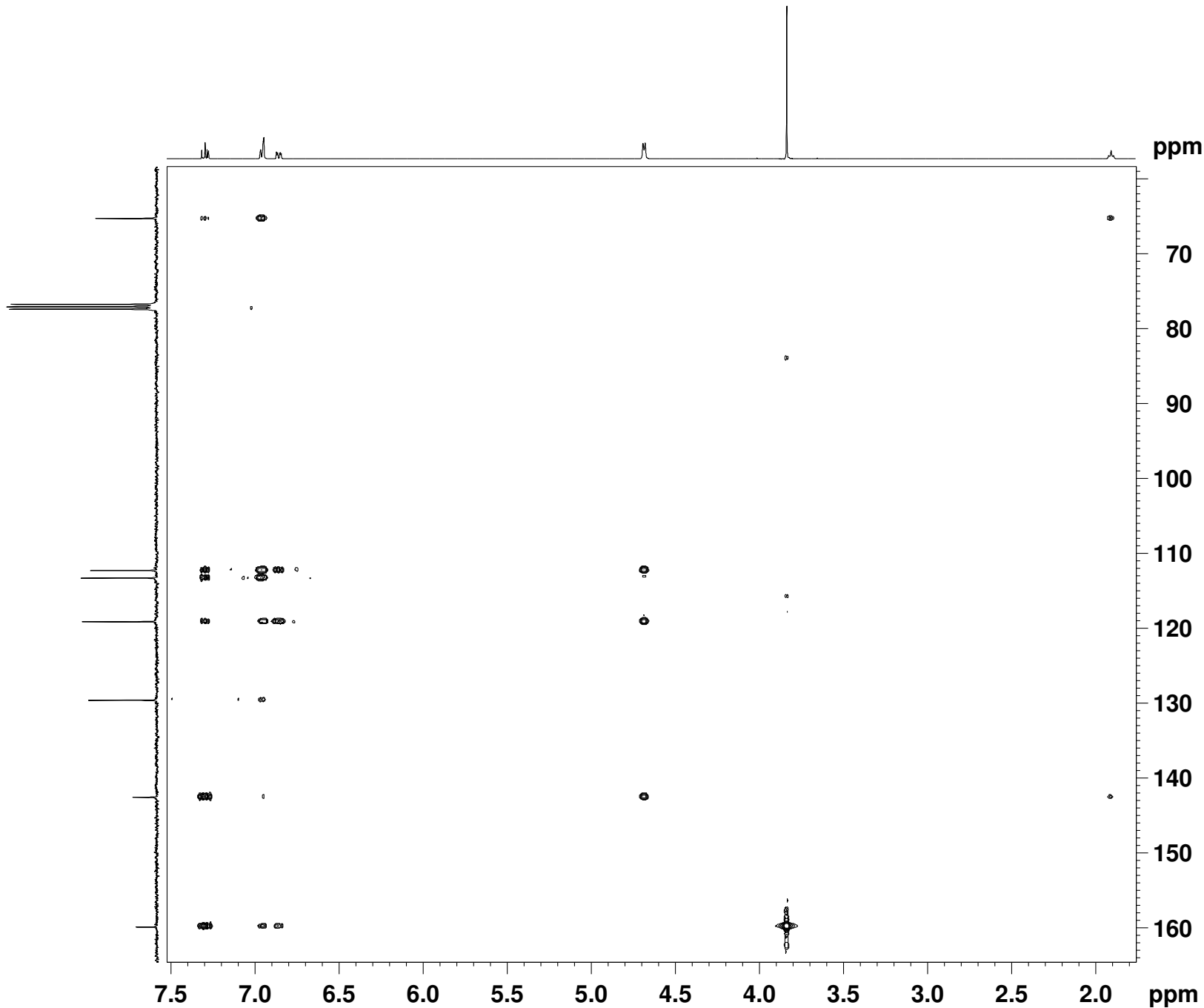


Unknown 47



```
NAME Un_47
EXPNO 5
PROCNO 1
Date_ 20120222
Time 16.26
INSTRUM robinson
PROBHD 5 mm PABBO BB-
PULPROG hmbcetgp13nd
TD 4096
SOLVENT CDCl3
NS 8
DS 16
SWH 3591.954 Hz
FIDRES 0.876942 Hz
AQ 0.5702132 sec
RG 16384
DW 139.200 usec
DE 6.50 usec
TE 298.2 K
CNST6 145.0000000
CNST7 165.0000000
CNST13 6.0000000
CNST30 0.5981120
D0 0.00000300 sec
D1 2.00000000 sec
D6 0.08333334 sec
D16 0.00020000 sec
IN0 0.00004140 sec

===== CHANNEL f1 =====
NUC1 1H
P1 10.90 usec
P2 21.80 usec
PL1 0.00 dB
SF01 400.1418006 MHz

===== CHANNEL f2 =====
NUC2 13C
P3 8.05 usec
P24 2000.00 usec
PL2 -2.00 dB
SF02 100.6263507 MHz
SP7 12.00 dB
SPNAM7 Crp60comp.4
SPOAL7 0.500
SPOFFS7 0.00 Hz

===== GRADIENT CHANNEL =====
GPNAM1 SINE.100
GPNAM3 SINE.100
GPNAM4 SINE.100
GPNAM5 SINE.100
GPNAM6 SINE.100
GPZ1 80.00 %
GPZ3 14.00 %
GPZ4 -8.00 %
GPZ5 -4.00 %
GPZ6 -2.00 %
P16 1000.00 usec
ND0 2
TD 256
SF01 100.6264 MHz
FIDRES 47.168602 Hz
SW 120.000 ppm
FnMODE Echo-Antiecho
SI 4096
SF 400.1400000 MHz
WDW QSINE
SSB 2
LB 0.00 Hz
GB 0
PC 1.40
SI 1024
MC2 echo-antiecho
SF 100.6152830 MHz
WDW QSINE
SSB 2
LB 0.00 Hz
GB 0
```