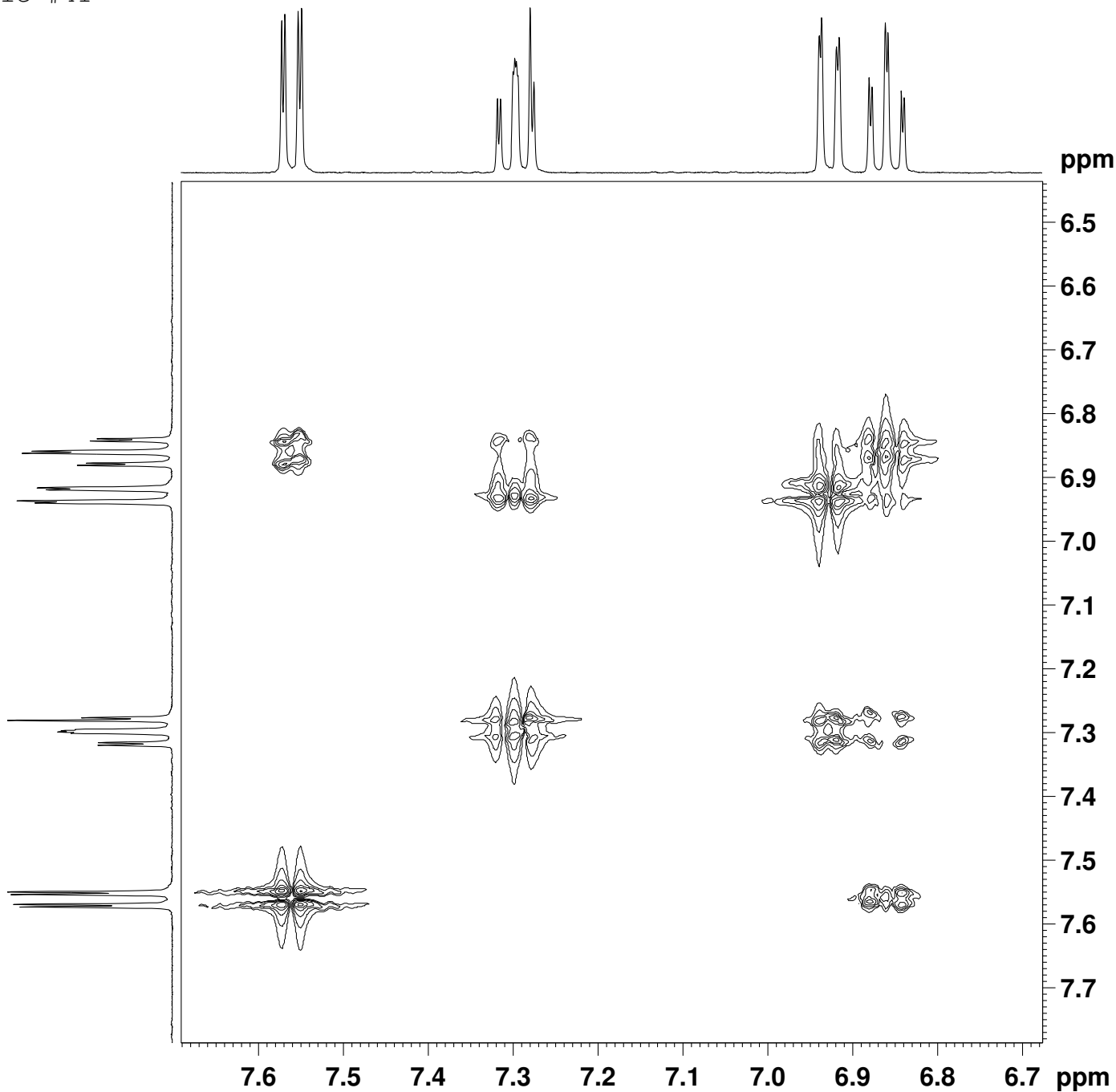


Sample #41



```
NAME Un_41
EXPNO 3
PROCNO 1
Date_ 20110506
Time 15.43
INSTRUM DPX400
PROBHD 5 mm BBO BB-1H
PULPROG cosygpgf
TD 2048
SOLVENT CDC13
NS 2
DS 4
SWH 2003.205 Hz
FIDRES 0.978127 Hz
AQ 0.5112308 sec
RG 456.1
DW 249.600 usec
DE 6.00 usec
TE 298.2 K
d0 0.00000300 sec
D1 2.00000000 sec
d13 0.00000400 sec
D16 0.00025000 sec
IN0 0.00049920 sec

===== CHANNEL f1 =====
NUC1 1H
P0 13.50 usec
P1 13.50 usec
PL1 -3.00 dB
SFO1 400.2472013 MHz

===== GRADIENT CHANNEL =====
GPNAM1 SINE.100
GPNAM2 SINE.100
GPZ1 10.00 %
GPZ2 10.00 %
P16 1000.00 usec
ND0 1
TD 128
SFO1 400.2472 MHz
FIDRES 15.650040 Hz
SW 5.005 ppm
FnMODE QF
SI 2048
SF 400.2450000 MHz
WDW QSINE
SSB 2
LB 0.00 Hz
GB 0
PC 1.40
SI 2048
MC2 QF
SF 400.2450000 MHz
WDW QSINE
SSB 2
LB 0.00 Hz
GB 0
```