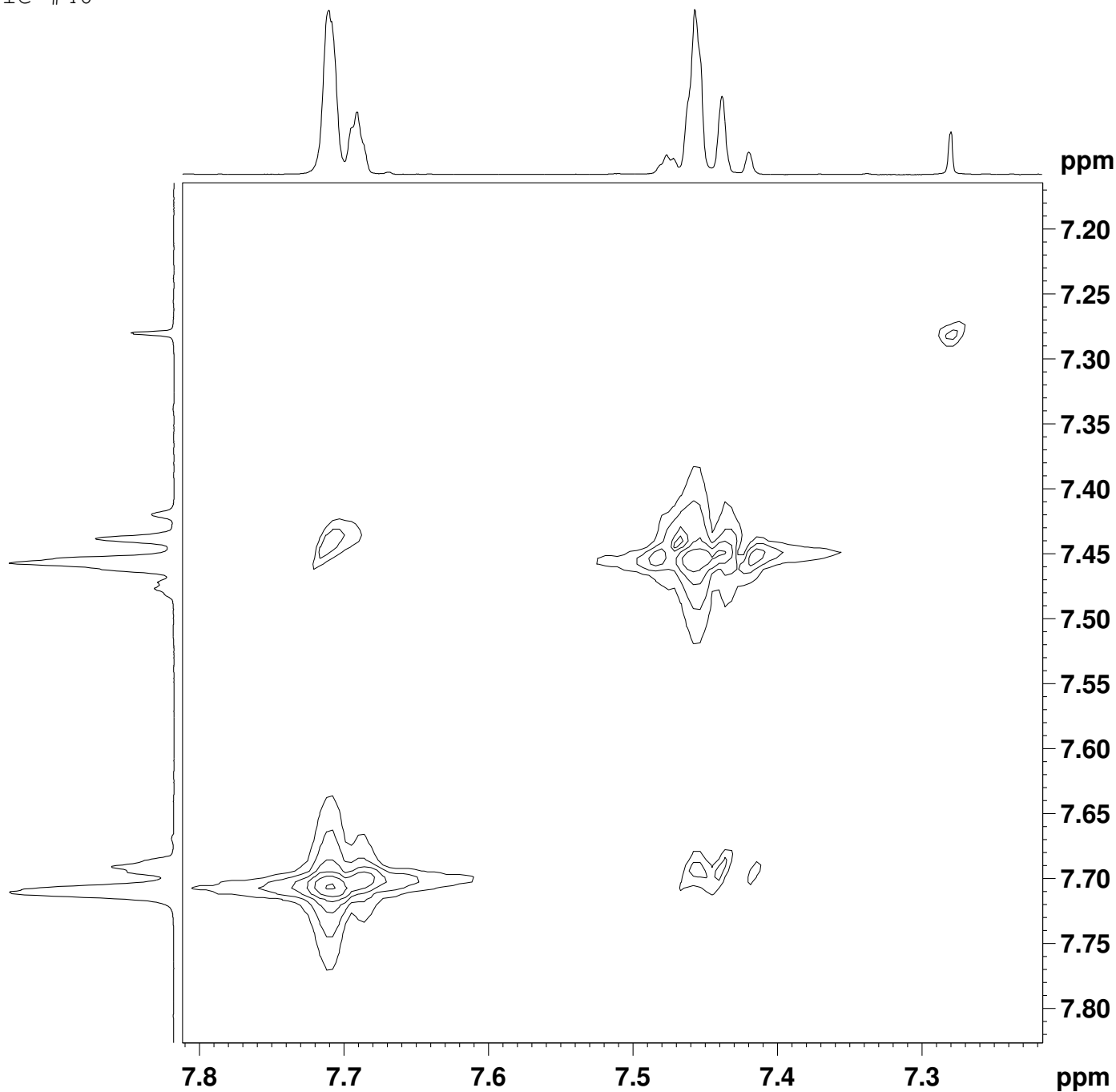


Sample #40



```
NAME          Un_40
EXPNO         3
PROCNO        1
Date_         20110427
Time          13.56
INSTRUM       DPX400
PROBHD        5 mm BBO BB-1H
PULPROG       cosygpgf
TD            2048
SOLVENT       CDC13
NS            2
DS            4
SWH           3591.954 Hz
FIDRES        1.753884 Hz
AQ            0.2851316 sec
RG            645.1
DW            139.200 usec
DE            6.00 usec
TE            298.2 K
d0            0.00000300 sec
D1            2.00000000 sec
d13           0.00000400 sec
D16           0.00025000 sec
IN0           0.00027840 sec

===== CHANNEL f1 =====
NUC1          1H
P0            13.50 usec
P1            13.50 usec
PL1           -3.00 dB
SFO1          400.2476016 MHz

===== GRADIENT CHANNEL =====
GPNAM1       SINE.100
GPNAM2       SINE.100
GPZ1         10.00 %
GPZ2         10.00 %
P16          1000.00 usec
ND0          1
TD           128
SFO1          400.2476 MHz
FIDRES        28.062141 Hz
SW            8.974 ppm
FnMODE       QF
SI           2048
SF           400.2450000 MHz
WDW          QSINE
SSB          2
LB            0.00 Hz
GB            0
PC            1.40
SI           2048
MC2          QF
SF           400.2450000 MHz
WDW          QSINE
SSB          2
LB            0.00 Hz
GB            0
```