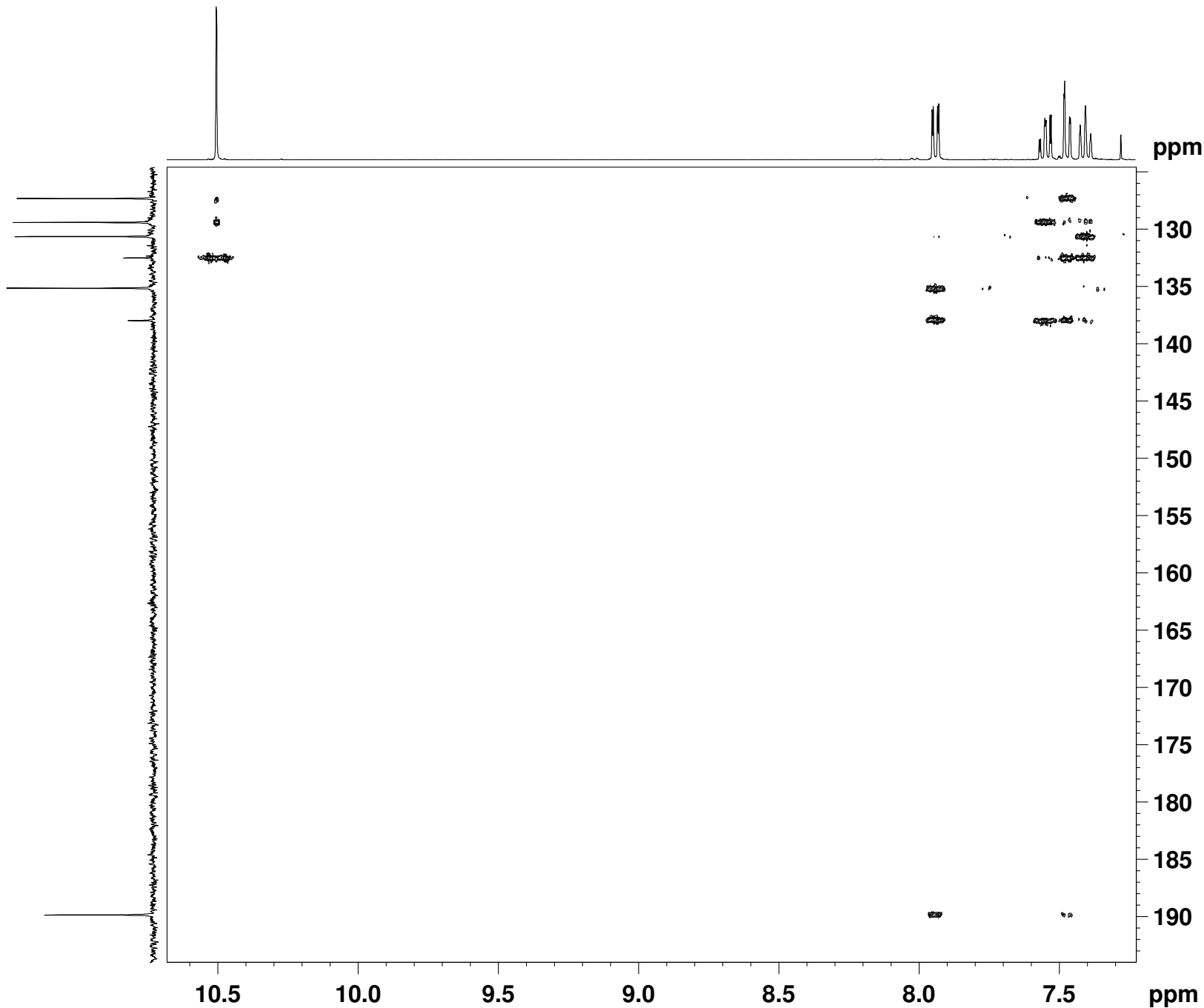


Sample #37



```
NAME Un_37
EXPNO 5
PROCNO 1
Date_ 20110407
Time 11.15
INSTRUM DPX400
PROBHD 5 mm BBO BB-1H
PULPROG hmbcetgp12nd
TD 2048
SOLVENT CDC13
NS 4
DS 16
SWH 2003.205 Hz
FIDRES 0.978127 Hz
AQ 0.5112308 sec
RG 16384
DW 249.600 usec
DE 6.00 usec
TE 298.2 K
CNST6 145.0000000
CNST7 160.0000000
CNST13 8.0000000
CNST30 0.5980973
d0 0.0000300 sec
d1 2.0000000 sec
d6 0.06250000 sec
D16 0.00025000 sec
DELTA1 0.00219828 sec
DELTA2 0.00187500 sec
DELTA3 0.06124600 sec
DELTA4 0.00003300 sec
IN0 0.00006210 sec
ST1CNT 0

===== CHANNEL f1 =====
NUC1 1H
P1 13.50 usec
p2 27.00 usec
PL1 -3.00 dB
SFO1 400.2484021 MHz

===== CHANNEL f2 =====
NUC2 13C
P3 7.00 usec
P24 2000.00 usec
PL2 -3.00 dB
SFO2 100.6577877 MHz
SP7 12.00 dB
SPNAM7 Crp80comp.4
SPOAL7 0.500
SPOFFS7 0.00 Hz

===== GRADIENT CHANNEL =====
GPNAM1 SINE.100
GPNAM3 SINE.100
GPNAM4 SINE.100
GPNAM5 SINE.100
GPZ1 80.00 %
GPZ3 15.00 %
GPZ4 -10.00 %
GPZ5 -5.00 %
P16 1000.00 usec
ND0 2
TD 128
SFO1 100.6578 MHz
FIDRES 62.902576 Hz
SW 79.989 ppm
FnMODE Echo-Antiecho
SI 2048
SF 400.2450000 MHz
WDW SINE
SSB 2
LB 0.00 Hz
GB 0
PC 1.40
SI 1024
MC2 echo-antiecho
SF 100.6416850 MHz
WDW SINE
SSB 2
LB 0.00 Hz
GB 0
```