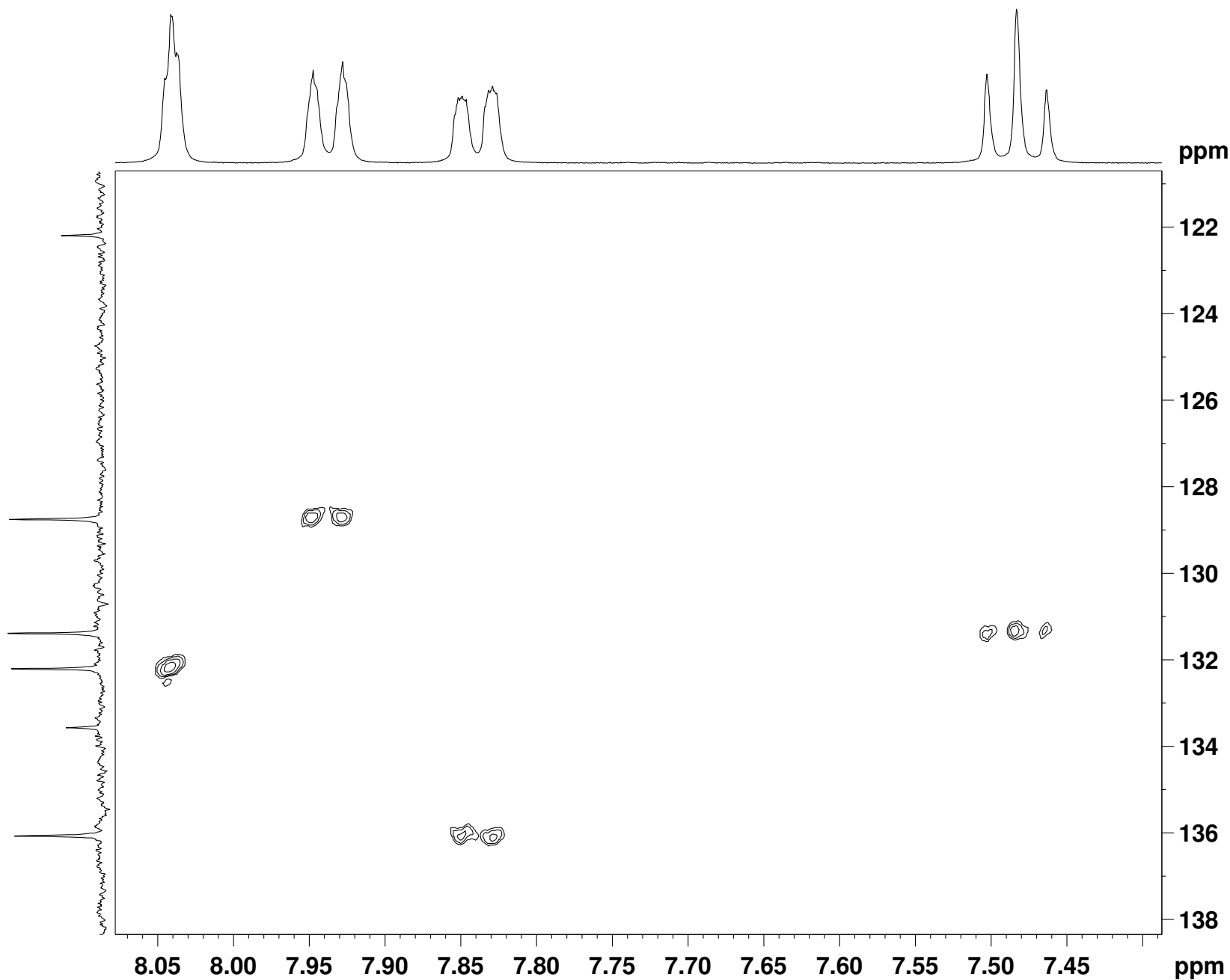


Sample #27



```
NAME Un_27
EXPNO 4
PROCNO 1
Date_ 20110404
Time 12.53
INSTRUM DPX400
PROBHD 5 mm BBO BB-1H
PULPROG hsqcedetgp
TD 1024
SOLVENT DMSO
NS 4
DS 16
SWH 801.282 Hz
FIDRES 0.782502 Hz
AQ 0.6390260 sec
RG 10321.3
DW 624.000 usec
DE 6.00 usec
TE 298.2 K
CNST2 145.0000000
d0 0.00000300 sec
D1 2.00000000 sec
d4 0.00172414 sec
d11 0.03000000 sec
d13 0.00000400 sec
D16 0.00025000 sec
D21 0.00344000 sec
DELTA 0.00215700 sec
DELTA1 0.00071614 sec
IN0 0.00007095 sec
ST1CNT 0
ZGOPTNS

===== CHANNEL f1 =====
NUC1 1H
P1 13.50 usec
p2 27.00 usec
P28 1000.00 usec
PL1 -3.00 dB
SFO1 400.2480018 MHz

===== CHANNEL f2 =====
CPDPRG2 waltz16
NUC2 13C
P3 7.00 usec
p4 14.00 usec
PCPD2 65.00 usec
PL2 -3.00 dB
PL12 16.00 dB
SFO2 100.6562780 MHz

===== GRADIENT CHANNEL =====
GPNAM1 SINE.100
GPNAM2 SINE.100
GPZ1 80.00 %
GPZ2 20.10 %
P16 1000.00 usec
ND0 2
TD 128
SFO1 100.6563 MHz
FIDRES 55.056377 Hz
SW 70.013 ppm
FnMODE Echo-Antiecho
SI 2048
SF 400.2450000 MHz
WDW QSINE
SSB 2
LB 0.00 Hz
GB 0
PC 1.40
SI 1024
MC2 echo-antiecho
SF 100.6416850 MHz
WDW QSINE
SSB 2
LB 0.00 Hz
GB 0
```