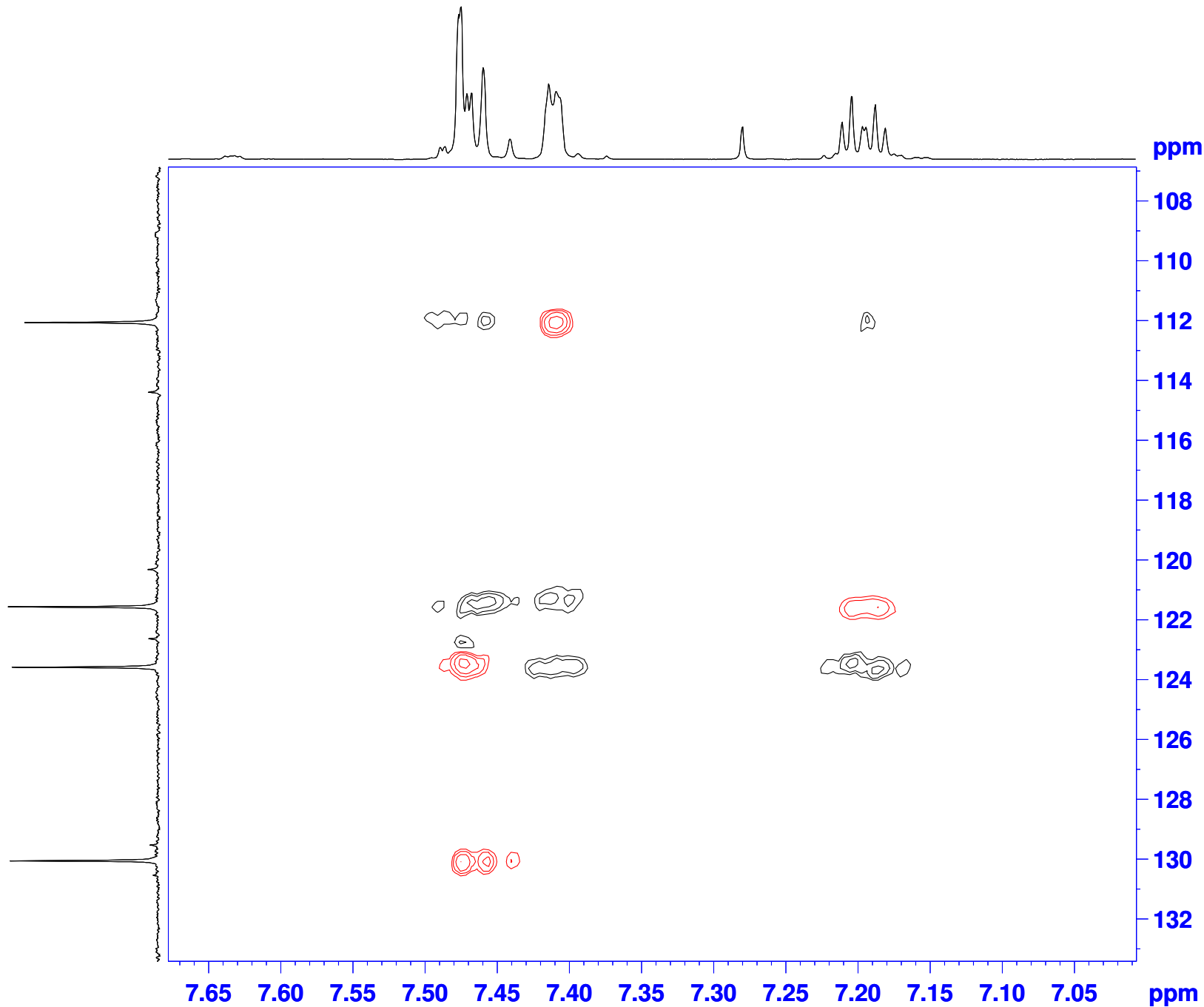


Sample #25



```
NAME Un_25
EXPNO 4
PROCNO 1
Date_ 20110421
Time 13.15
INSTRUM DPX400
PROBHD 5 mm BBO BB-1H
PULPROG hsqcedetgp
TD 2048
SOLVENT DMSO
NS 4
DS 16
SWH 3205.128 Hz
FIDRES 1.565004 Hz
AQ 0.3195380 sec
RG 16384
DW 156.000 usec
DE 6.00 usec
TE 298.2 K
CNST2 145.0000000
d0 0.00000300 sec
D1 2.00000000 sec
d4 0.00172414 sec
d11 0.03000000 sec
d13 0.00000400 sec
D16 0.00025000 sec
D21 0.00344000 sec
DELTA 0.00215700 sec
DELTA1 0.00071614 sec
IN0 0.00003310 sec
ST1CNT 0
ZGOF TNS

===== CHANNEL f1 =====
NUC1 1H
P1 13.50 usec
p2 27.00 usec
P28 1000.00 usec
PL1 -3.00 dB
SFO1 400.2478017 MHz

===== CHANNEL f2 =====
CPDPRG2 waltz16
NUC2 13C
P3 7.00 usec
p4 14.00 usec
PCPD2 65.00 usec
PL2 -3.00 dB
PL12 16.00 dB
SFO2 100.6542652 MHz

===== GRADIENT CHANNEL =====
GPNAM1 SINE.100
GPNAM2 SINE.100
GPZ1 80.00 %
GPZ2 20.10 %
P16 1000.00 usec
ND0 2
TD 128
SFO1 100.6543 MHz
FIDRES 118.013596 Hz
SW 150.076 ppm
FnMODE Echo-Antiecho
SI 2048
SF 400.2450000 MHz
WDW QSINE
SSB 2
LB 0.00 Hz
GB 0
PC 1.40
SI 1024
MC2 echo-antiecho
SF 100.6416850 MHz
WDW QSINE
SSB 2
LB 0.00 Hz
GB 0
```