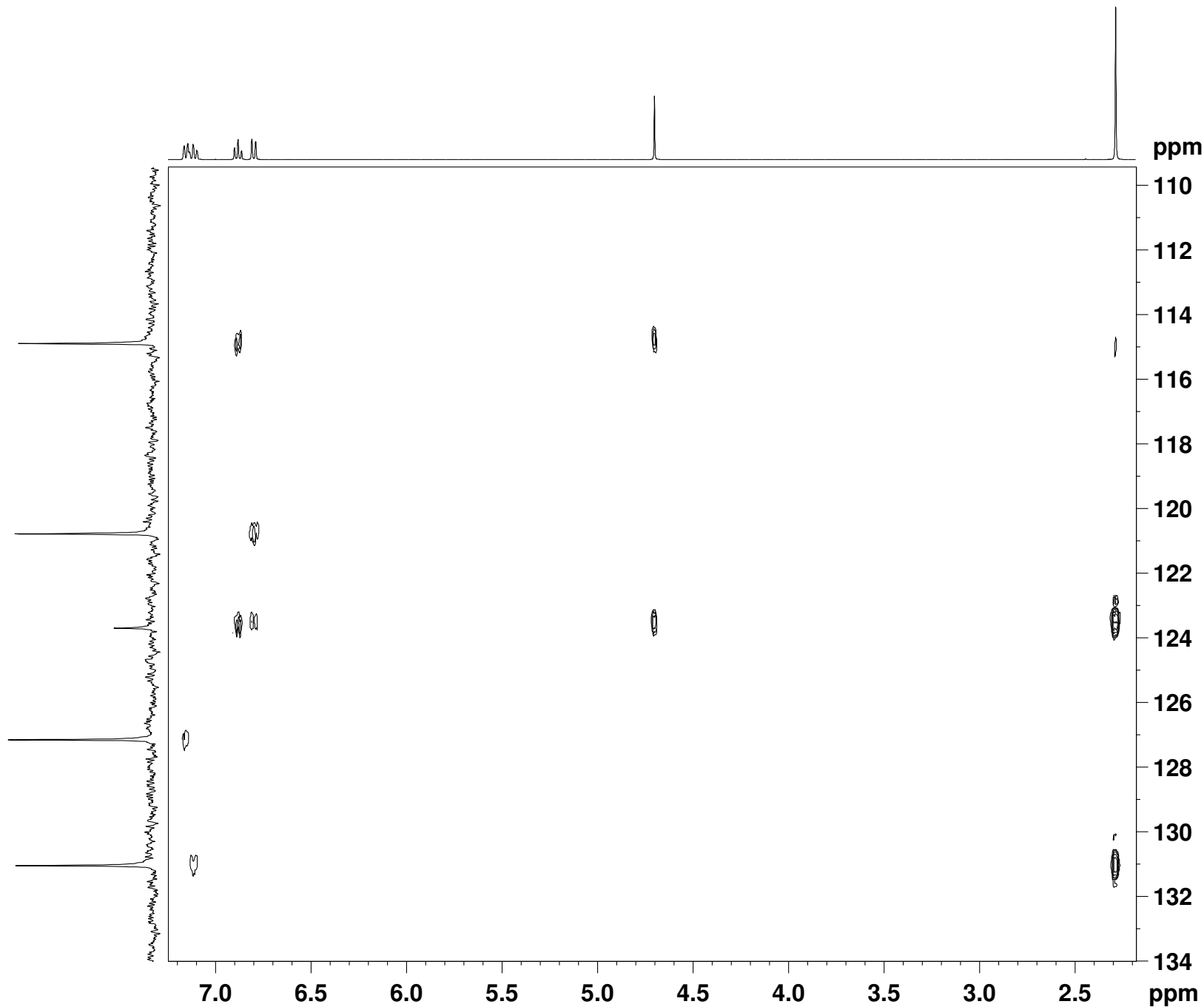


Sample #17



```

NAME          Un_17
EXPNO         5
PROCNO        1
Date_         20110412
Time          12.55
INSTRUM       DPX400
PROBHD        5 mm BBO BB-1H
PULPROG       hmbcetgp12nd
TD            2048
SOLVENT       CDC13
NS            4
DS            16
SWH           2394.636 Hz
FIDRES        1.169256 Hz
AQ            0.4276724 sec
RG            16384
DW            208.800 usec
DE            6.00 usec
TE            298.2 K
CNST6         145.0000000
CNST7         160.0000000
CNST13        8.0000000
CNST30        0.5981218
d0            0.0000300 sec
d1            2.0000000 sec
d6            0.06250000 sec
D16           0.00025000 sec
DELTA1        0.00219828 sec
DELTA2        0.00187500 sec
DELTA3        0.06124600 sec
DELTA4        0.00003300 sec
INO           0.00003105 sec
ST1CNT        0

===== CHANNEL f1 =====
NUC1           1H
P1             13.50 usec
p2             27.00 usec
PL1            -3.00 dB
SFO1           400.2470012 MHz

===== CHANNEL f2 =====
NUC2           13C
P3             7.00 usec
P24            2000.00 usec
PL2            -3.00 dB
SFO2           100.6497363 MHz
SP7            12.00 dB
SPNAM7         Crp80comp.4
SPOAL7         0.500
SPOFFS7        0.00 Hz

===== GRADIENT CHANNEL =====
GPNAM1         SINE.100
GPNAM3         SINE.100
GPNAM4         SINE.100
GPNAM5         SINE.100
GPZ1           80.00 %
GPZ3           15.00 %
GPZ4           -10.00 %
GPZ5           -5.00 %
P16            1000.00 usec
ND0            2
TD             128
SFO1           100.6497 MHz
FIDRES         125.805153 Hz
SW             159.991 ppm
FnMODE         Echo-Antiecho
SI             2048
SF             400.2450000 MHz
WDW            SINE
SSB            2
LB             0.00 Hz
GB             0
PC             1.40
SI             1024
MC2            echo-antiecho
SF             100.6416850 MHz
WDW            SINE
SSB            2
LB             0.00 Hz
GB             0
  
```