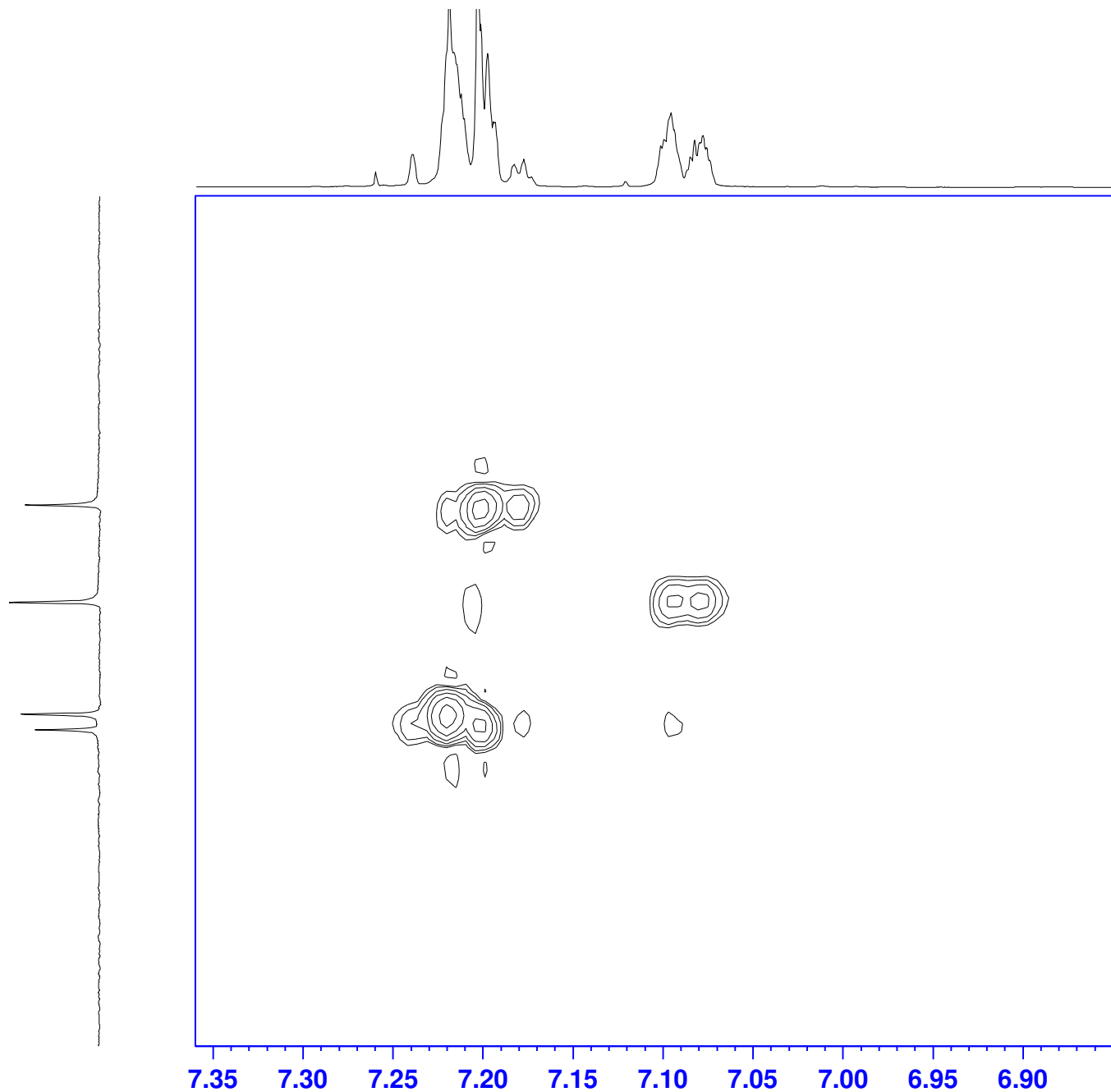


Sample #15 HSQC



Current Data Parameters
NAME sample15
EXPNO 6
PROCNO 1

F2 - Acquisition Parameters
Date_ 20010111
Time 11.44
INSTRUM dpx400
PROBHD 5 mm BBO 2-Gra
PULPROG invieagssi
TD 2048
SOLVENT CDCl3
NS 4
DS 8
SWH 2200.704 Hz
FIDRES 1.074563 Hz
AQ 0.4653056 sec
RG 5792.6
DW 227.200 usec
DE 6.00 usec
TE 300.0 K
CNST0 1.0000000
D0 0.00000300 sec
D1 1.00000000 sec
D4 0.00172500 sec
D11 0.03000000 sec
D13 0.00000300 sec
D16 0.00030000 sec
d20 0.00137640 sec
d21 0.00130700 sec
D24 0.00172414 sec
IN0 0.00003549 sec
13 0

==== CHANNEL f1 =====
NUC1 1H
P1 8.10 usec
P2 20.40 usec
P28 2000.00 usec
PL1 -3.00 dB
SFO1 400.1319006 MHz

==== CHANNEL f2 =====
CPDPRG[2] garp
NUC2 13C
P3 7.00 usec
P4 16.00 usec
PCPD2 43.20 usec
PL2 -3.00 dB
PL12 12.00 dB
SFO2 100.6207780 MHz

==== GRADIENT CHANNEL =====
P16 1000.00 usec

F1 - Acquisition parameters
TD 256
SFO1 100.6208 MHz
FIDRES 110.073967 Hz
SW 140.025 ppm
FnMODE undefined

F2 - Processing parameters
SI 1024
SF 400.1300094 MHz
WDW QSINE
SSB 2
LB 0 Hz
GB 0
PC 1.00

F1 - Processing parameters
SI 1024
MC2 echo-antiecho
SF 100.6127290 MHz
WDW QSINE
SSB 2
LB 0 Hz
GB 0