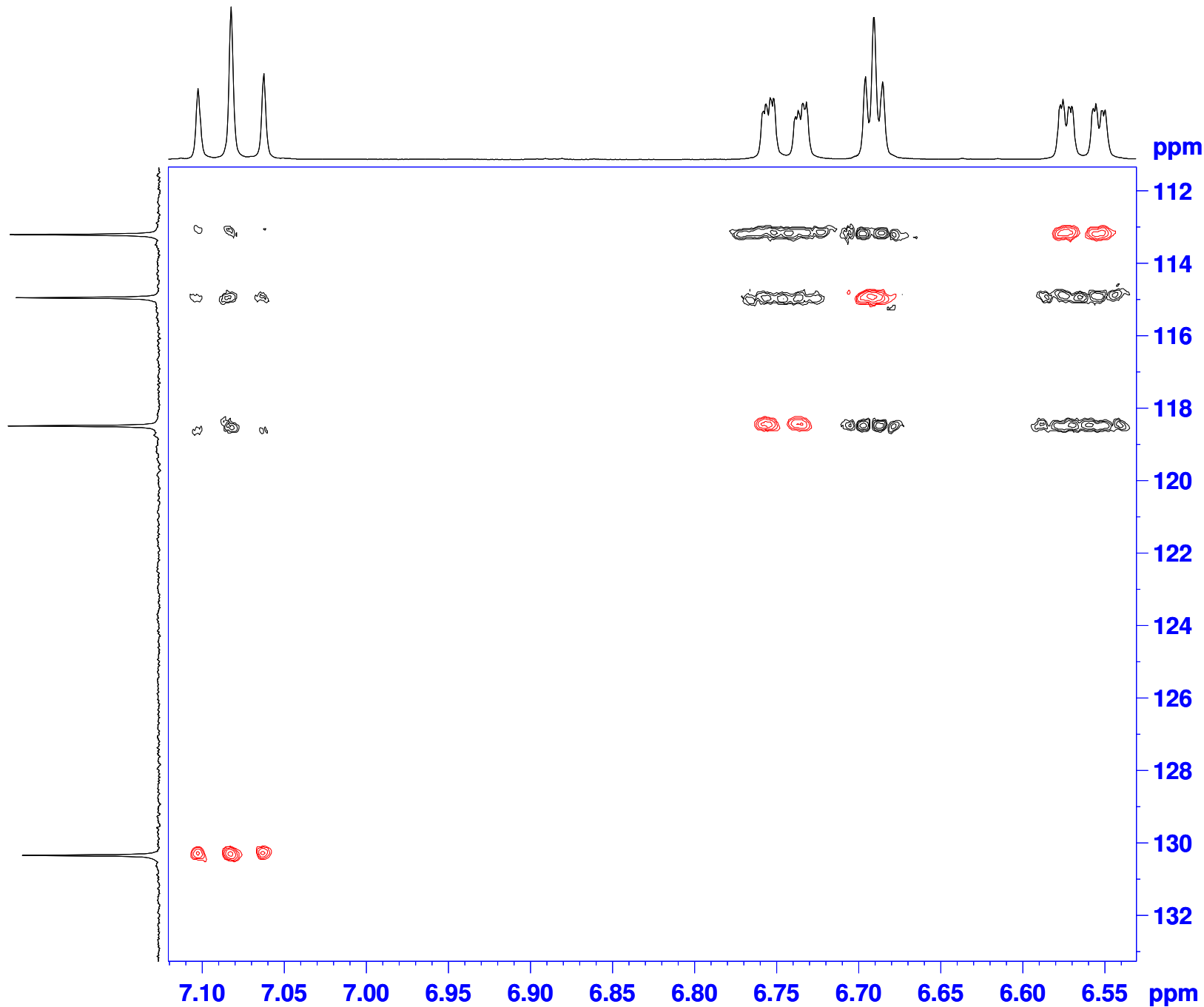


Sample #5



```

NAME          Un_05
EXPNO         4
PROCNO        1
Date_         20110401
Time          10.18
INSTRUM       DPX400
PROBHD        5 mm BBO BB-1H
PULPROG       hsqcedetgp
TD            1024
SOLVENT       CDCl3
NS            4
DS            16
SWH           801.282 Hz
FIDRES        0.782502 Hz
AQ            0.6390260 sec
RG            16384
DW            624.000 usec
DE            6.00 usec
TE            298.2 K
CNST2         145.0000000
d0            0.00000300 sec
D1            2.00000000 sec
d4            0.00172414 sec
d11           0.03000000 sec
d13           0.00000400 sec
D16           0.00025000 sec
D21           0.00344000 sec
DELTA         0.00215700 sec
DELTA1        0.00071614 sec
IN0           0.00008280 sec
ST1CNT        0
ZGOF1NS

===== CHANNEL f1 =====
NUC1           1H
P1             13.50 usec
p2             27.00 usec
P28            1000.00 usec
PL1            -3.00 dB
SFO1           400.2478017 MHz

===== CHANNEL f2 =====
CPDPRG2       waltz16
NUC2           13C
P3             7.00 usec
p4             14.00 usec
PCPD2         65.00 usec
PL2            -3.00 dB
PL12          16.00 dB
SFO2           100.6547684 MHz

===== GRADIENT CHANNEL =====
GPNAM1        SINE.100
GPNAM2        SINE.100
GPZ1           80.00 %
GPZ2           20.10 %
P16            1000.00 usec
ND0            2
TD             128
SFO1           100.6548 MHz
FIDRES         47.176933 Hz
SW             59.994 ppm
FnMODE         Echo-Antiecho
SI             2048
SF             400.2450000 MHz
WDW            QSINE
SSB            2
LB             0.00 Hz
GB             0
PC             1.40
SI             1024
MC2            echo-antiecho
SF             100.6416850 MHz
WDW            QSINE
SSB            2
LB             0.00 Hz
GB             0
  
```