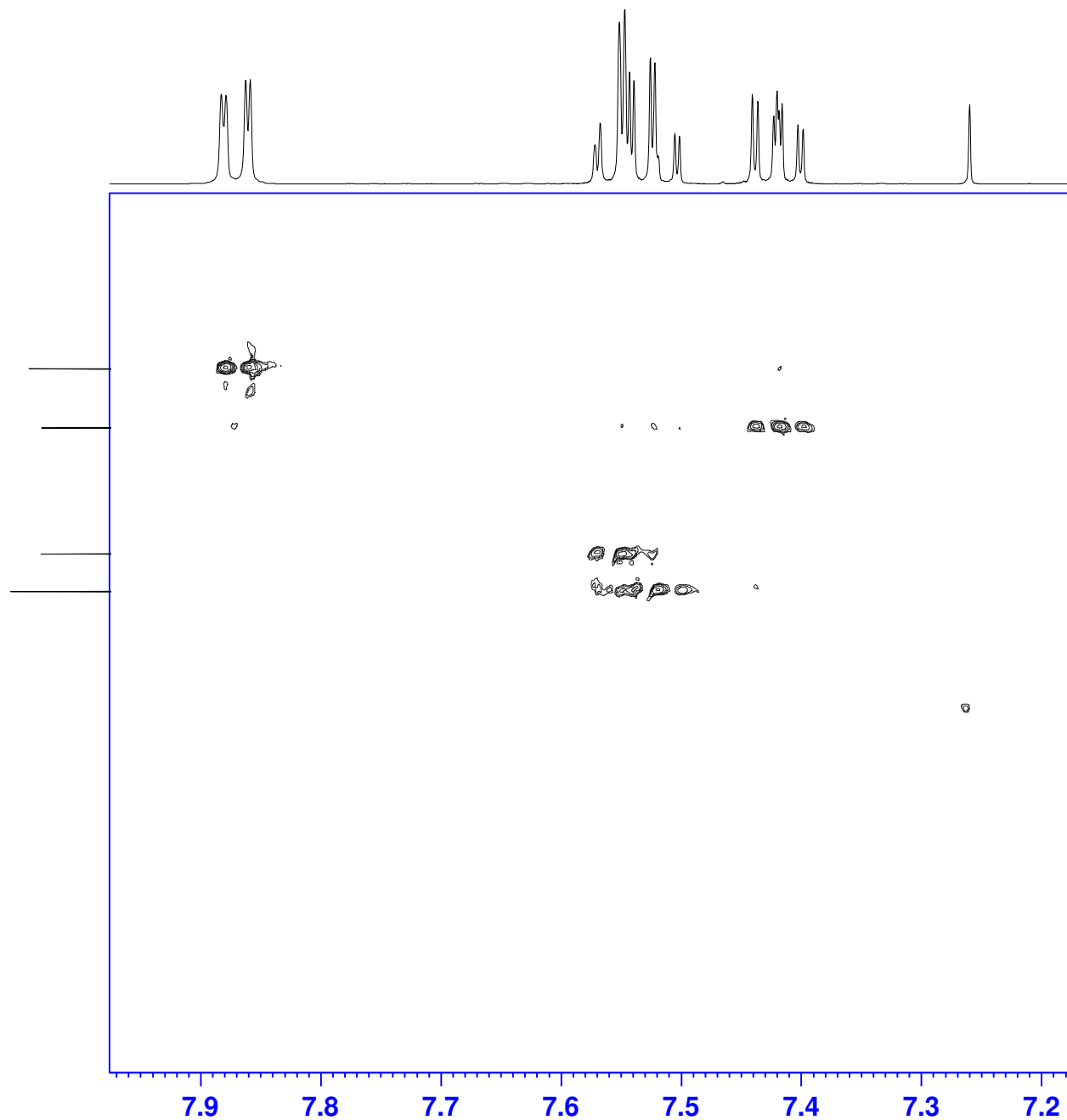


Sample #1 HSQC



Current Data Parameters  
NAME sample01  
EXPNO 6  
PROCNO 1

F2 - Acquisition Parameters  
Date\_ 20001207  
Time 15.04  
INSTRUM dpx400  
PROBHD 5 mm BBO 2-Gra  
PULPROG invieagssi  
TD 512  
SOLVENT CDCl3  
NS 8  
DS 16  
SWH 319.530 Hz  
FIDRES 0.624081 Hz  
AQ 0.8011776 sec  
RG 3649.1  
DW 1564.800 usec  
DE 6.00 usec  
TE 300.0 K  
CNST0 1.0000000  
D0 0.0000300 sec  
D1 2.0000000 sec  
D4 0.00172500 sec  
D11 0.03000000 sec  
D13 0.00000300 sec  
D16 0.00030000 sec  
d20 0.00137640 sec  
d21 0.00130700 sec  
D24 0.00172414 sec  
IN0 0.00016562 sec  
13 0

==== CHANNEL f1 =====  
NUC1 1H  
P1 8.10 usec  
P2 20.40 usec  
P28 2000.00 usec  
PL1 -3.00 dB  
SFO1 400.1330410 MHz

==== CHANNEL f2 =====  
CPDPRG[2] garp  
NUC2 13C  
P3 7.00 usec  
P4 16.00 usec  
PCPD2 43.20 usec  
PL2 -3.00 dB  
PL12 12.00 dB  
SFO2 100.6263117 MHz

==== GRADIENT CHANNEL =====  
P16 1000.00 usec

F1 - Acquisition parameters  
TD 64  
SFO1 100.6263 MHz  
FIDRES 94.339622 Hz  
SW 30.001 ppm  
FnMODE undefined

F2 - Processing parameters  
SI 1024  
SF 400.1300094 MHz  
WDW QSINE  
SSB 2  
LB 0 Hz  
GB 0  
PC 0.30

F1 - Processing parameters  
SI 1024  
MC2 echo-antiecho  
SF 100.6127290 MHz  
WDW QSINE  
SSB 2  
LB 0 Hz  
GB 0