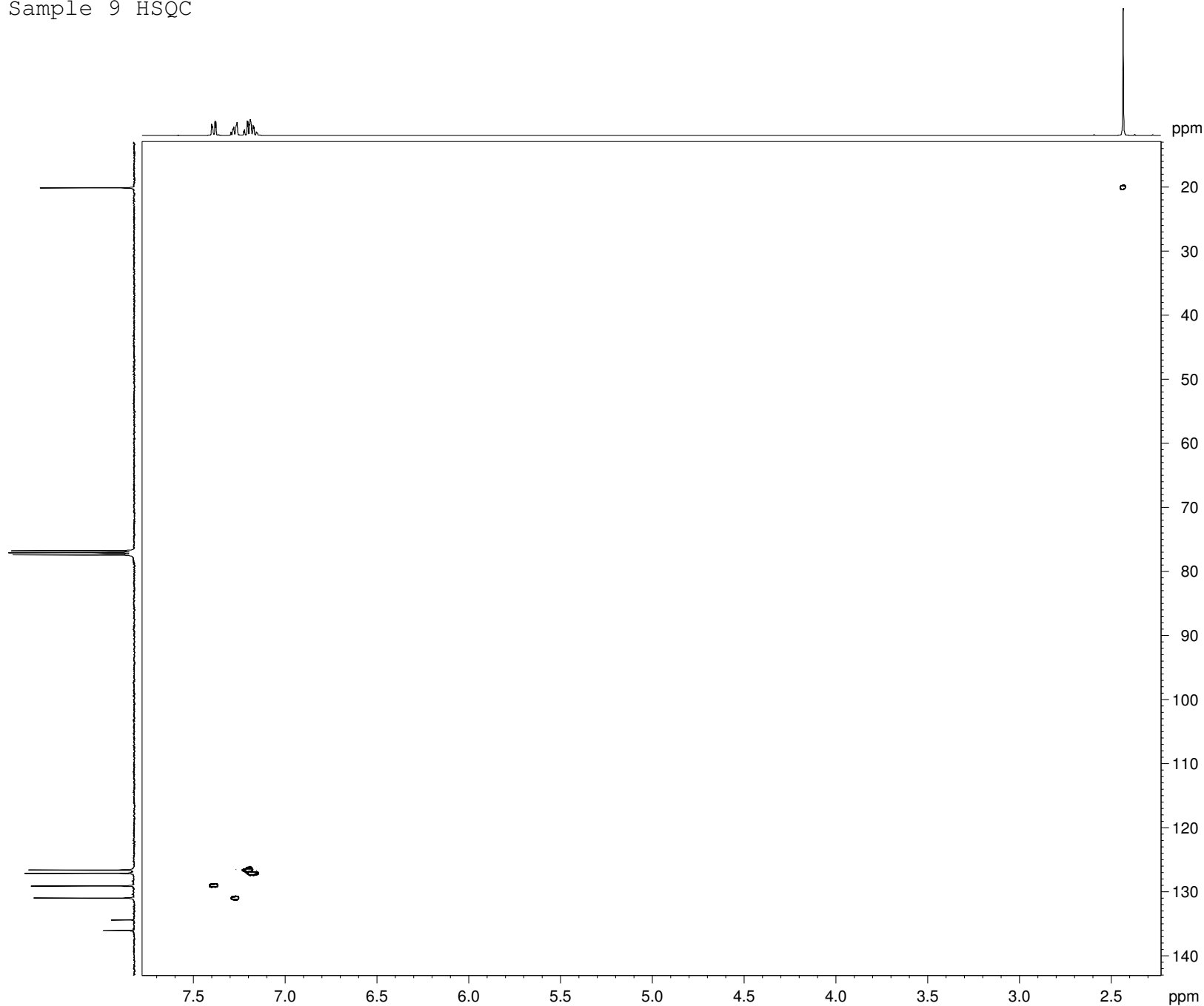


Sample 9 HSQC



```

Current Data Parameters
NAME          Un_09
EXPNO         11
PROCNO        4
DU            /m
USER          rodger

F2 - Acquisition Parameters
Date_         20070828
Time          11.44
INSTRUM       DFX400
PROBHD        5 mm BBO BB-1H
PULPROG       hsqcedetgp
TD            1024
SOLVENT       CDCl3
NS            4
DS            16
SWH           2394.636 Hz
FIDRES        2.338512 Hz
AQ            0.2138612 sec
RG            4597.6
DW            208.800 usec
DE            6.00 usec
TE            299.2 K
CNST2         145.0000000
d0            0.0000300 sec
D1            2.0000000 sec
d4            0.00172414 sec
d11           0.03000000 sec
d13           0.00000400 sec
D16           0.00025000 sec
D21           0.00344000 sec
DELTA         0.00215500 sec
DELTA1        0.00071614 sec
IN0           0.00003105 sec
ST1CNT        64
ZGOPTNS

===== CHANNEL f1 =====
NUC1          1H
P1            14.50 usec
p2            29.00 usec
P28           1000.00 usec
PL1           0.00 dB
SFO1          400.0120000 MHz

===== CHANNEL f2 =====
CPDPRG2       garp
NUC2          13C
P3            7.00 usec
P4            14.00 usec
PCPD2         65.00 usec
PL2           -3.00 dB
PL12          16.00 dB
SFO2          100.5906416 MHz

===== GRADIENT CHANNEL =====
GPNAM1        SINE.100
GPNAM2        SINE.100
GPZ1          80.00 %
GPZ2          20.10 %
P16           1000.00 usec

F1 - Acquisition parameters
ND0           2
TD            512
SFO1          100.5906 MHz
FIDRES        31.451288 Hz
SW            160.085 ppm
FnMODE        Echo-Antiecho

F2 - Processing parameters
SI            2048
SF            400.0100000 MHz
WDW           QSINE
SSB           2
LB            0.00 Hz
GB            0
PC            1.40

F1 - Processing parameters
SI            1024
MC2           echo-antiecho
SF            100.5825950 MHz
WDW           QSINE
SSB           2
LB            0.00 Hz
GB            0
    
```