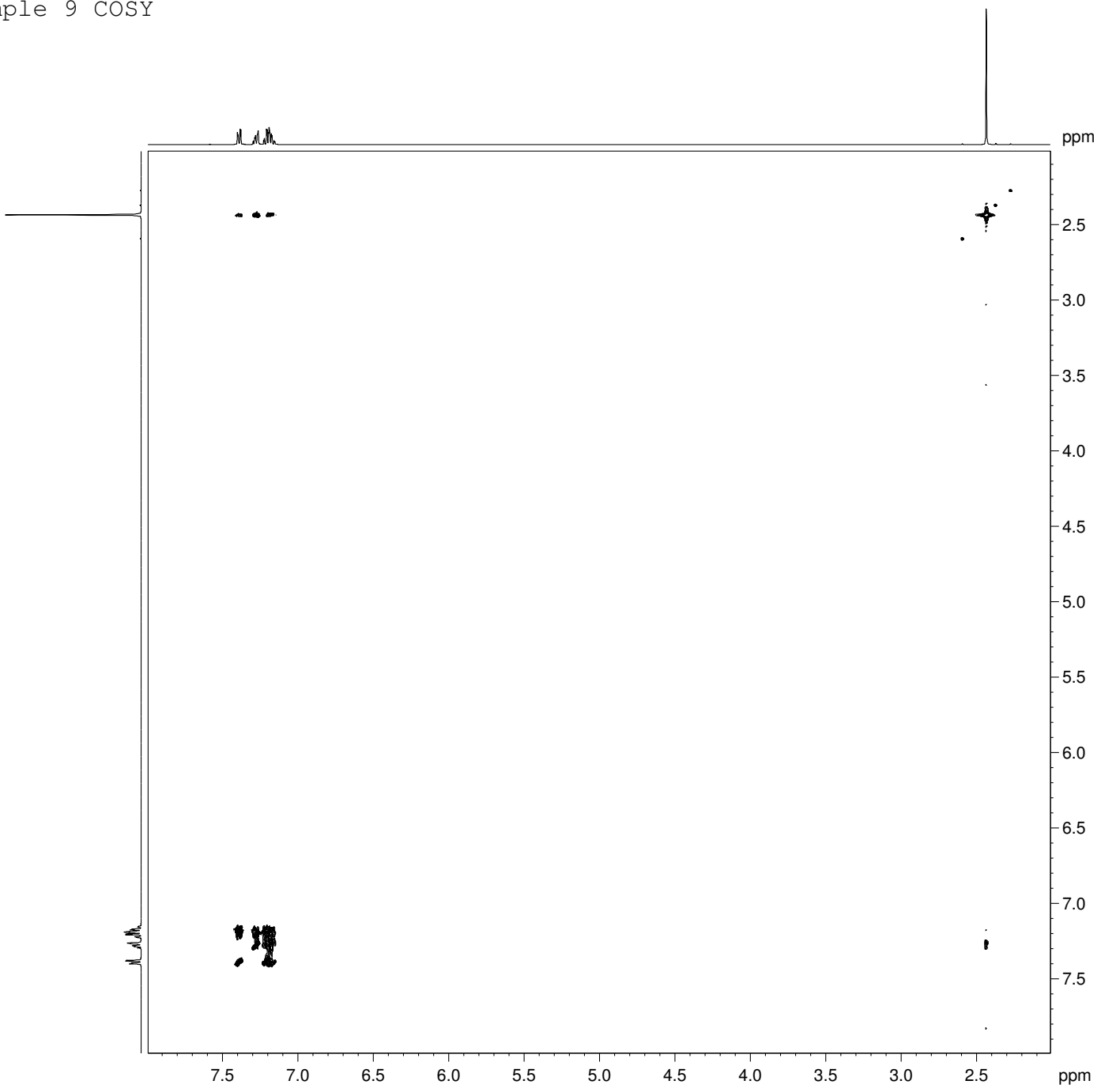


Sample 9 COSY



```

Current Data Parameters
NAME          Un_09
EXPNO         3
PROCNO        1
DU            /m
USER          rodger

F2 - Acquisition Parameters
Date_         20070828
Time          10.47
INSTRUM       DPX400
PROBHD        5 mm BBO BB-1H
PULPROG       cosygpqf
TD            2048
SOLVENT
NS             2
DS             8
SWH           2394.636 Hz
FIDRES        1.169256 Hz
AQ            0.4276724 sec
RG            1290.2
DW            208.800 usec
DE            6.00 usec
TE            299.2 K
d0            0.00000300 sec
D1            2.00000000 sec
d13           0.00000400 sec
D16           0.00020000 sec
IN0           0.00041760 sec

===== CHANNEL f1 =====
NUC1           1H
P0             7.50 usec
P1            14.50 usec
PL1            0.00 dB
SFO1          400.0120000 MHz

===== GRADIENT CHANNEL =====
GPNAM1        SINE.100
GPNAM2        SINE.100
GPZ1          10.00 %
GPZ2          10.00 %
P16           1000.00 usec

F1 - Acquisition parameters
ND0           1
TD            256
SFO1          400.012 MHz
FIDRES        9.354047 Hz
SW            5.986 ppm
FnMODE        QF

F2 - Processing parameters
SI            2048
SF            400.0100000 MHz
WDW           SINE
SSB           0
LB            0.00 Hz
GB            0
PC            1.40

F1 - Processing parameters
SI            1024
MC2           QF
SF            400.0100000 MHz
WDW           SINE
SSB           0
LB            0.00 Hz
GB            0
    
```