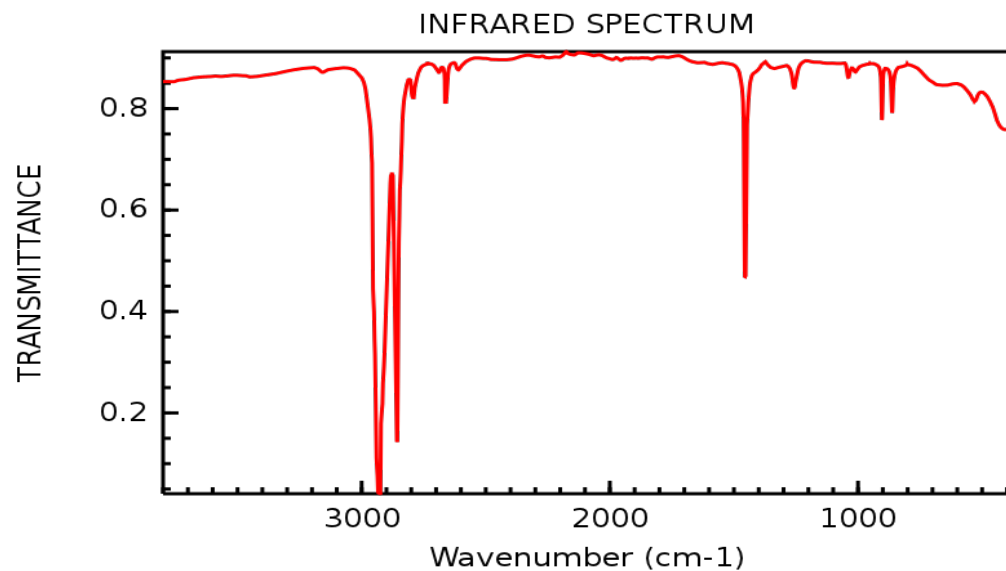
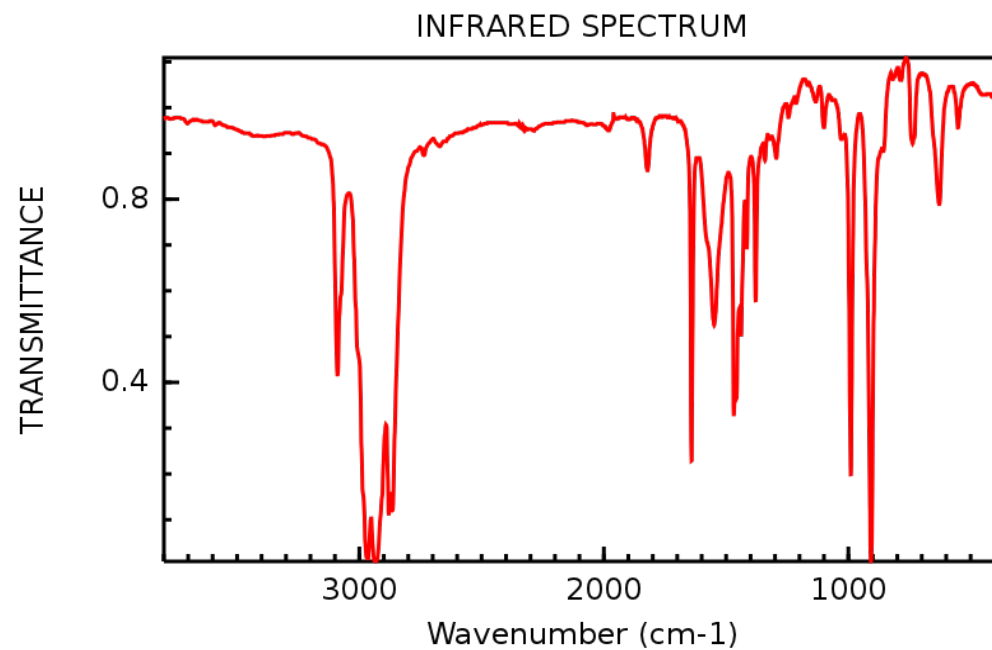
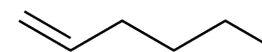
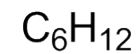


Match each spectrum with the proper structure.

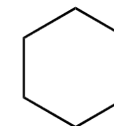


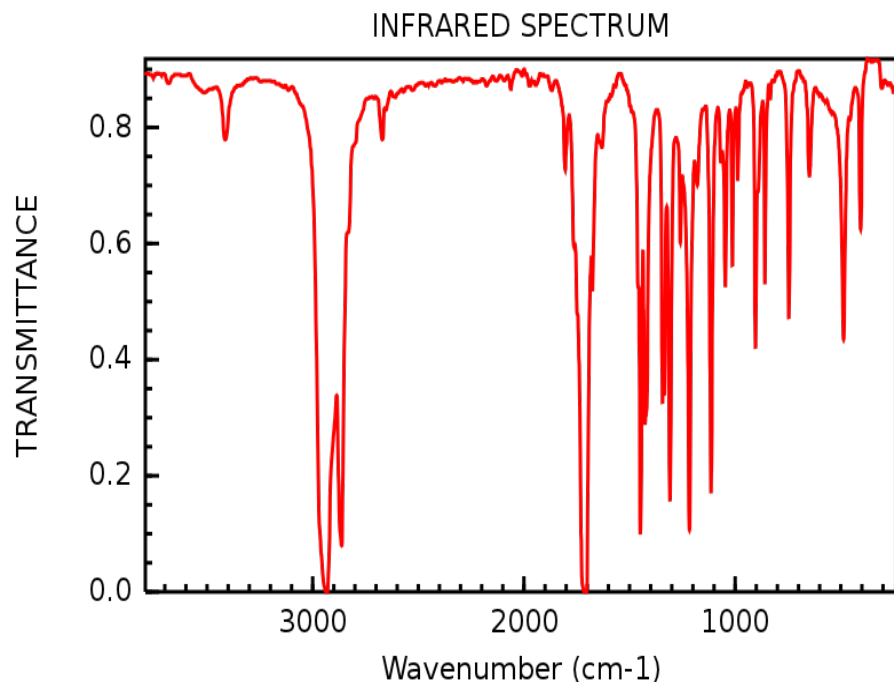
Major peaks (all in cm^{-1}):
2930
2855
1452



Major peaks (all in cm^{-1}):

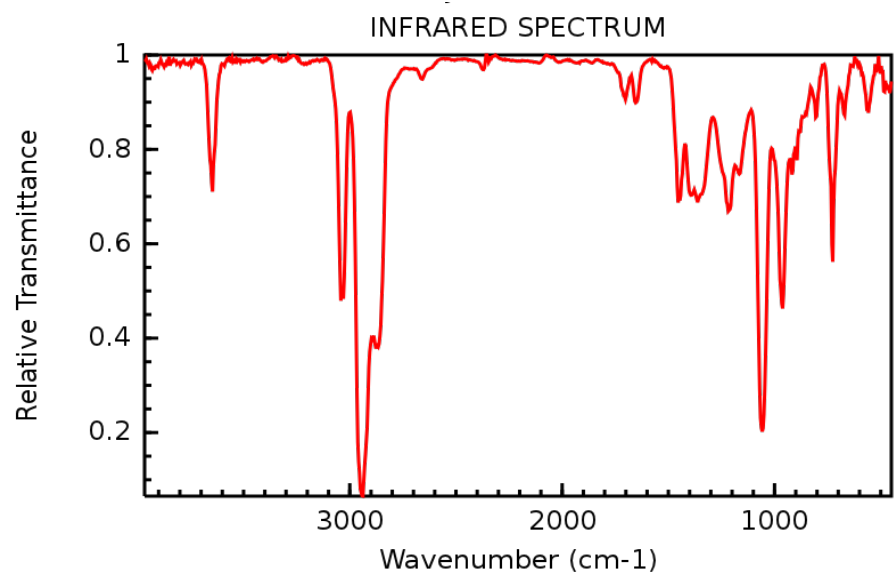
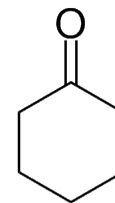
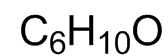
3090
2970
2940
2870
2860
1640
1550
1470
1455
1380
985
905





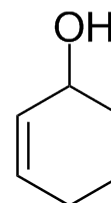
Major peaks (all in cm⁻¹):

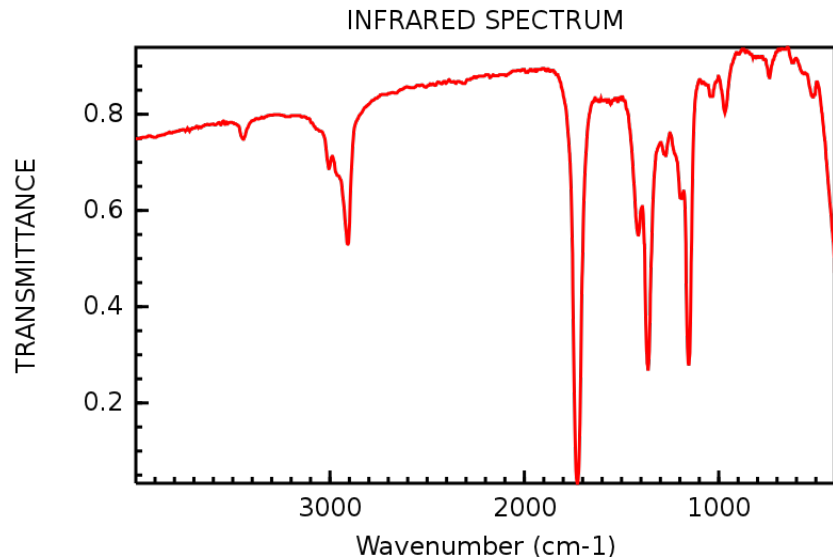
2930
2860
1710
1425
1420
1325
1322
1305
1210
1110
905
750
480



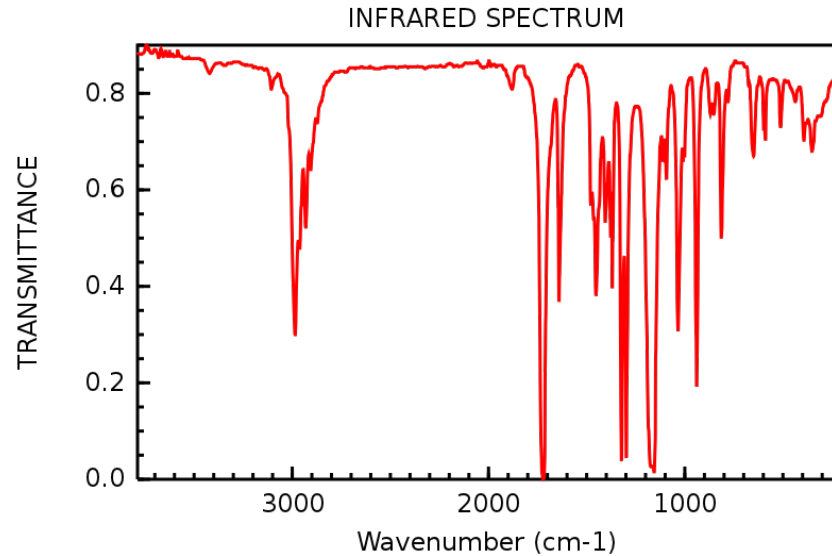
Major peaks (all in cm⁻¹):

3700
3045
3030
2940
2865
1075
960
730

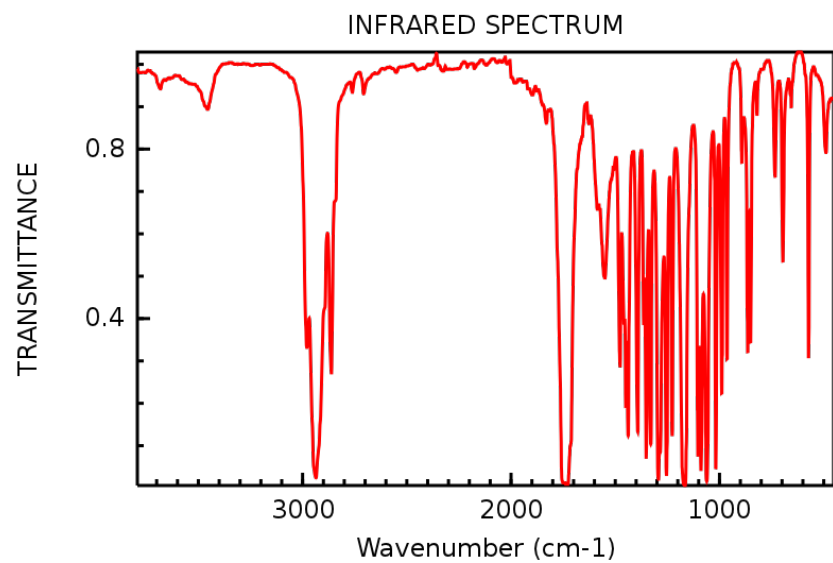




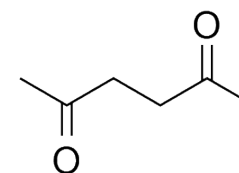
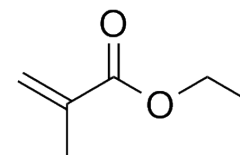
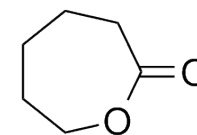
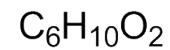
Most intense peak: 1727 cm^{-1} . Others at $1360, 1150\text{ cm}^{-1}$.

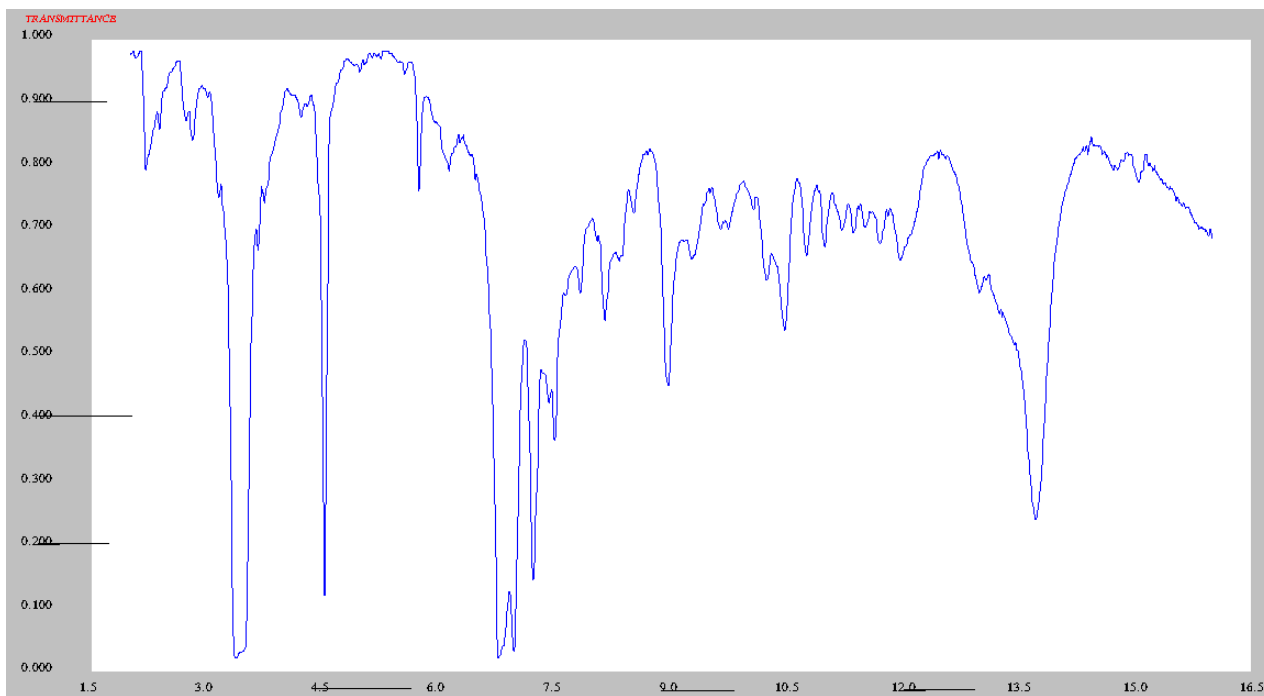


Significant peaks: $1720, 1640\text{ cm}^{-1}$. Others at $2980, 1320, 1300, 1170, 1030, 930\text{ cm}^{-1}$.

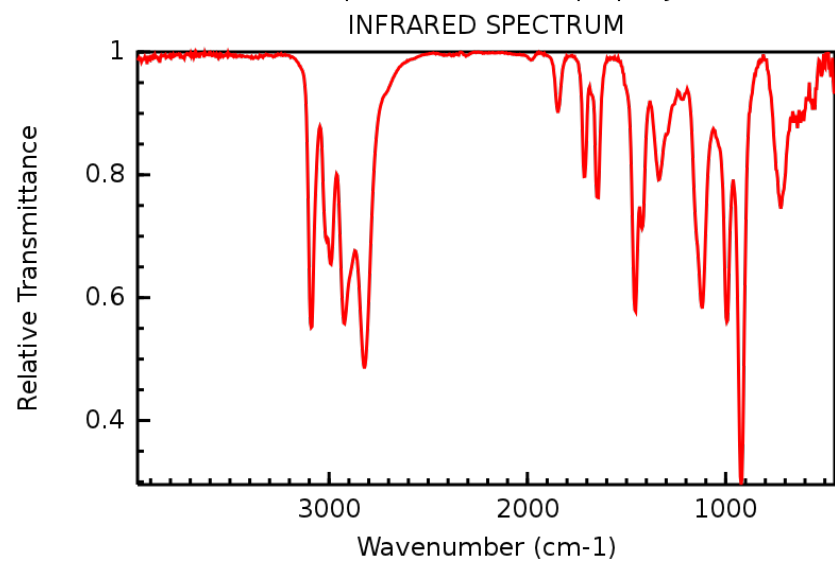


Most intense peak: 1740 cm^{-1} . Peaks also at $2935, \text{many } 1470\text{-}850\text{ cm}^{-1}$.

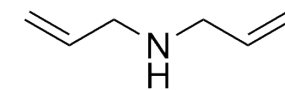
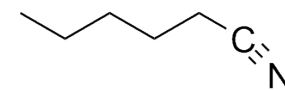
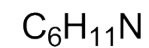


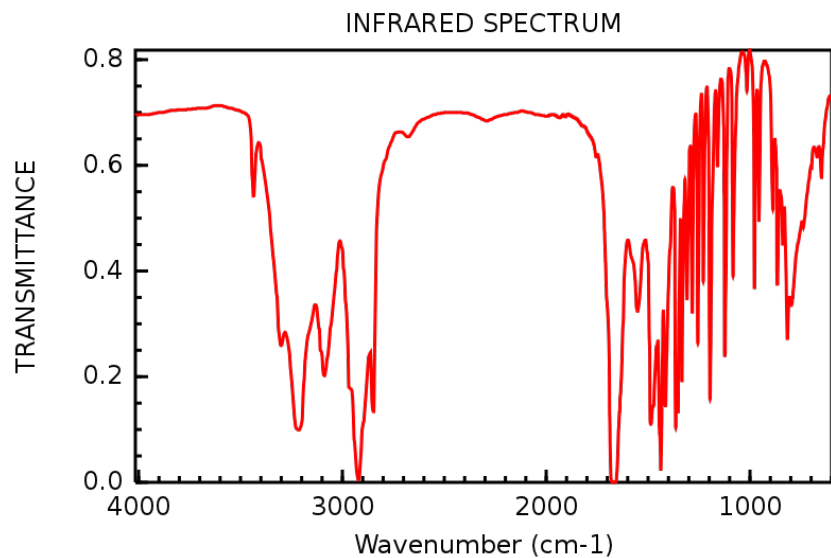


Major peak: 4.5 μm (= 2222 cm^{-1})
 Others at 3.35 μm (= 2985 cm^{-1})
 6.85 μm (= 1459 cm^{-1})
 7.00 μm (= 1428 cm^{-1})
 13.6 μm (= 735 cm^{-1})

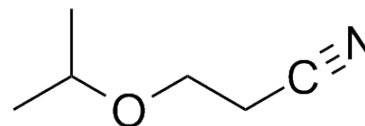
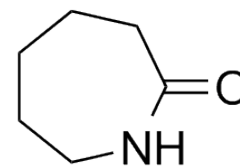
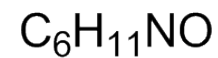


Major peaks: 3090, 3015, 2990,
 2925, 2820 cm^{-1} .





Major peak: 1670 cm^{-1} .
 Also $3210, 3095, 2920,$
 $2850, 1480, 1440, 1420,$
 $1360, 1350, 1330, 1195,$
 $975, 865, 820, 800\text{ cm}^{-1}$.



Important peak: $4.5\text{ }\mu\text{m}, =2222\text{ cm}^{-1}$
 Also others at $3.35\text{ }\mu\text{m} (=2985\text{ cm}^{-1})$
 $3.40\text{ }\mu\text{m} (=2940\text{ cm}^{-1})$
 $7.40\text{ }\mu\text{m} (=1350\text{ cm}^{-1})$
 $7.42\text{ }\mu\text{m} (=1345\text{ cm}^{-1})$
 $7.50\text{ }\mu\text{m} (=1330\text{ cm}^{-1})$
 $8.9\text{ }\mu\text{m} (=1125\text{ cm}^{-1})$
 $9.05\text{ }\mu\text{m} (=1105\text{ cm}^{-1})$
 $10.5\text{ }\mu\text{m} (=950\text{ cm}^{-1})$

