

# THIS WEEK IN BI 103

PORTFOLIO #2 IS DUE MONDAY MAY 4 BY 5:00 P.M., I3I WNGR

**TUESDAY LECTURE**



**Nervous System**  
*An overview of neurons and electrochemical signals.*

**THURSDAY LECTURE**



**Brain and Senses**  
*Test your memory of smells and tastes as we link synapses and sleep to memory.*

**RECITATION**



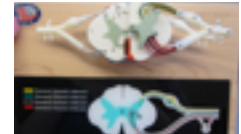
**Brain and Nerves**  
*A tour through the basic structures and functions of nervous system organs.*

**LABORATORY**



**Senses**  
*Be ready to sniff, you will be testing olfactory abilities and other senses.*

**TEXTBOOK READINGS**



**98-107; 120-121, 129-133; 141-155; 332-343**  
*Nervous system organs and diseases.*

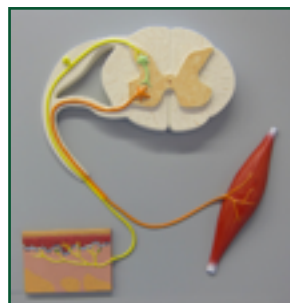


**Work Ahead on Nervous System Structures & Functions**

Read 98-107, 120-121, 129-133 and 141-155 in *Human Body*.

The central nervous system consists of the \_\_\_\_\_ and \_\_\_\_\_. The organs of the peripheral nervous system are the \_\_\_\_\_ (p. 98). The peripheral nervous system has three divisions: \_\_\_\_\_, \_\_\_\_\_, and \_\_\_\_\_ (p. 100). Describe what each of these three parts of the PNS do. (p. 100, 131, 132).

In addition to the five “traditional” senses, we have additional senses including pain reception. Describe how drugs impact pain (p. 145).



**Reflex**

**Describe the steps of a reflex “knee-jerk” response after you tap the patellar ligament of the knee (you’ll get to gently try this in recitation).**

**Work Ahead on Nervous System Disorders**

Read 332-343 in *Human Body* and answer the following questions.

Briefly describe the cause and symptoms of each of these diseases:

- Epilepsy:
- Multiple Sclerosis (MS):
- Dementia:
- Stroke:
- Migraine:
- Meningitis:

### Work Ahead for Recitation

In the **activity manual** read over *Brain and Nerves* to answer these questions.

Using *Human Body* (p. 108-109), fill in the functions for the cerebellum and the four lobes of the cerebral cortex (cerebrum), question #2, p. 104.

Read over the “Art About Science” portfolio assignment (p. 108). Think back to your past experiences, **what is your favorite science memory?** This is what you will be developing into an art piece for portfolio #3.

### Work Ahead for Laboratory

In the **activity manual**, read over *Senses* to answer these questions.

Using *Human Body* (p. 152) label the basic structures of the human eye (question #1, p. 109) and fill in the functions for each structure (question #2).

From what you have read in *Human Body* (p. 343) about farsightedness and nearsightedness, answer questions #1 and #2, page 111.

Why do dogs generally have a better sense of smell than humans? (question #5, p. 117)

**Exam #2 is next Monday, May 11, 7:00 - 7:50 p.m.**

Bring your photo ID, #2 pencil, and eraser. [Room assignments](#) are posted at the course website.



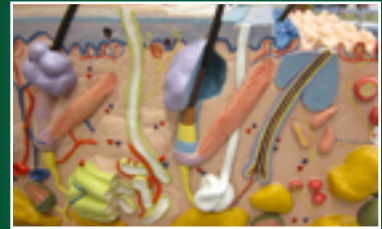
***Never Drive when Cognitively Impaired*** Station F, #3 (p. 108) in recitation has a fun activity that demonstrates how distractions can slow response time and accuracy.



#### Study Hint:

*The second exam covers weeks 4, 5, and 6. Often it is hard to recall material learned during the hectic middle of the term, start studying week 4 material now.*

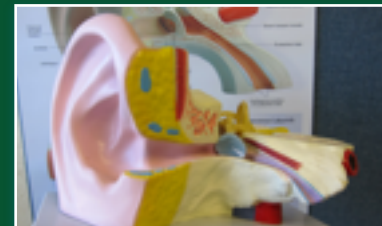
## Sensory Organs



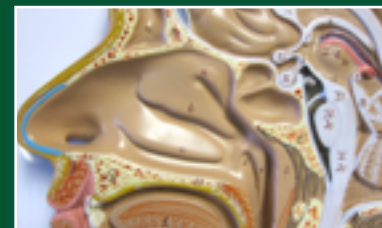
**Skin (week #1): Touch, Temperature, and Pain**



**Eye: Vision and Balance (p. 152-155)**



**Ear: Hearing and Balance (p. 148-151)**



**Nose: Olfaction (p. 147)**



**Tongue: Taste (p. 146)**