

THIS WEEK IN BI 103

TUESDAY LECTURE



Introduction
An overview of course mechanics and introduction to cells and tissues.

THURSDAY LECTURE



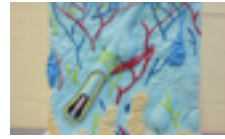
Integumentary System
The basic structures and functions of human skin.

RECITATION



Cells
127 Weniger Hall;
50-minute activity
Handouts provided.

LABORATORY



Skin
129 Weniger Hall;
110-minute activity;
Handouts provided.

ASSIGNED READINGS



Syllabus; 38-57, 310-313
The syllabus is at the website; pages refer to Human Body.



Start the term right, work ahead.

Work Ahead for Tuesday’s Lecture

Read pages 38-53 in *Human Body* and answer the following questions.

In a few words each, summarize the functions of the human organ systems.

Select two organelles (p. 46-47) and describe their functions.

Describe the three transport mechanisms across cellular membranes (p. 49)

Work Ahead for Thursday’s Lecture

Read pages 54-57 and 310-313 in *Human Body* and answer the following questions.

The two main skin layers are the _____ and _____ (p. 55), in lecture and lab the subcutaneous fat layer is also called the hypodermis.

Nails are made of the protein _____ (p. 56).

What causes boils to form? _____
What causes warts to form? _____
(p. 311)

Moles are caused by an overgrowth of skin cells called _____. (p. 313)

BI 103 Topics:
Human Anatomy, Physiology, and Disease

Work Ahead for Recitation

The first week's "Cells" recitation activity is available at the bottom of the [main BI 103 page](#) (scroll down, *you do not need to print it, a copy will be provided in class*).



Station B, question #1, p. 12: Using your *Human Body* textbook for assistance, try matching the various cell organelles with their basic functions.

Station B, question #1, p. 12: A phospholipid molecule has two parts, which one is water-soluble? _____

Define the following (Station F, p. 14):

Mitosis:

Differentiation:

Hypertrophy:

Apoptosis:

Work Ahead for Laboratory

The first week's "Skin" laboratory activity is available at the bottom of the [main BI 103 page](#) (*you do not need to print it, a copy will be provided in class*).

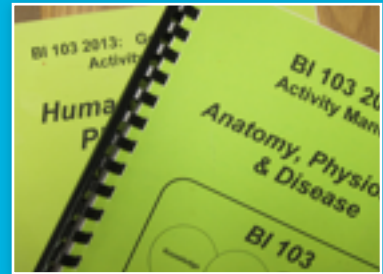
Station C, Question #1, p. 19: Fill in as many functions as you can in this table, using the *Human Body* book for assistance.

Question #5, p. 21: What are the names of the three general types of epithelial tissues?

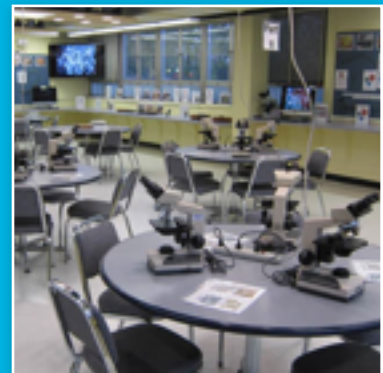
Answer Station H, question #1, by describing why happens to your skin when your body temperature cools.

Wondering what "GRP MTM" is Monday at 7:00 p.m.? This is the way the Registrar's office indicates that we have "group midterm exams" scheduled at 7:00 to 7:50 p.m., weeks 4 and 7 of the term.

Tips for Success in BI 103



Work ahead each week to avoid falling behind on the course material.



Develop a support network by working with other BI 103 students.



Questions? Ask someone in the teaching team for assistance. We have over 15 office hours each week and the hours are posted at the [course website](#).