

THIS WEEK IN BI 102

EXAM #1 IS MONDAY FEB 16, 7:00 - 7:50 P.M.

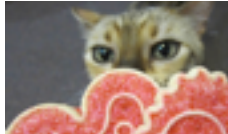
TUESDAY LECTURE



Sexual Selection

Examples of sexual selection and why it may be widespread in nature.

THURSDAY LECTURE



Behaviors

Innate and learned animal behaviors related to relative fitness.

RECITATION



Structures and Behaviors

Various animal predator-prey relationships.

LABORATORY



Innate and Learned Behaviors

Focus is on invertebrates behaviors.

ON-LINE READINGS



Bowerbirds, Crows, Jane Goodall

Complex, sometimes unexpected, animal behaviors.



Work Ahead for Tuesday’s Lecture

Read “Bowerbirds” and “Crows” answer the following questions.

How do male satin bowerbirds attract female bowerbirds?

Provide examples of how crows use tools.

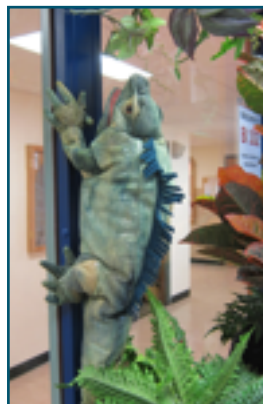
Describe why researchers believe western scrub jays (crow relatives) may use imagination in social interactions.

Work Ahead for Online Readings

Review “Jane Goodall” for the following questions.

Jane Goodall has primarily studied _____ behavior.

Describe how “Mike” used kerosene cans.



Exam locations are posted at the course website.

What is a possible example of altruism mentioned in the article?

Work Ahead for Recitation

In the activity manual, read over *Structures and Behaviors* to answer these questions.

From previously in the course. what is **fitness**? (question 5, p. 124).

Lynx eat hare, hare eat plants. For a long time researchers focused on how lynx impact hare populations. List other factors (besides a predator) that can impact hare survival.



In recitation this week you are modeling how variation in prey (and predators) can impact fitness.

Work Ahead for Laboratory

In the activity manual, read over *Innate and Learned Behaviors* to answer these questions.

Animals that are active primarily during the day are _____, animals that are active primarily at night are _____. Internal mechanisms that control biological rhythms are called _____, external mechanisms that control biological rhythms are called _____ (bottom of p. 129).

Invertebrate animals lack a _____.

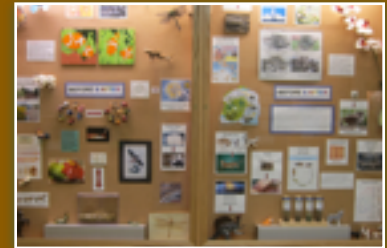
List five example of invertebrates (Part III, Stations B, C, D, E, F)



Explain the difference between **kinesis** and **taxis** behaviors.

If your exam #2 results are not as high as you would like... First, reflect on your studying for this exam; do you see ways to improve studying for the final exam? Next, seek assistance from the Teaching Team ([office hours](#) are posted at the course website).

Finish this Term Strong



Before and After: The Before and After art portfolio assignment (introduced in last week's lab) is worth five points and a good activity to complete in advance.



Cricket Observations: This week in lab you will be introduced to a cricket observation portfolio assignment, the crickets are in the alb window this week, so you can make the observations before or after class.

Look Ahead: Approximately 10 of the 60 questions on the final exam are cumulative. These are over material covered repeatedly in the course.