

THIS WEEK IN BI 101

TUESDAY LECTURE



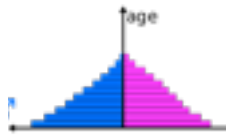
Population Dynamics
Carrying Capacity (k) and other population concepts.

THURSDAY LECTURE



Human Population
Our dramatic past two centuries and projections into the future.

RECITATION



Population Data
Analyze human population data sets and relate this to other species.

LABORATORY



Local Habitats
Places to visit and organisms to observe beyond the BI 101 classroom.

ON-LINE READINGS



Finley Wildlife Refuge
See the Canada Dusky Geese and a variety of habitats.



Final Exam: Tuesday Dec. 9, 8:00 p.m. - 9:50 p.m.

Work Ahead for the Online Reading

Read “[Finley NWR](#)” and answer the following questions:

List six different types of habitats found within the Finley National Wildlife Refuge.

List two organisms found in each of these six habitats



Final Exam Locations:

Room assignments are posted at the [course website](#).

Work Ahead for Recitation

Read the **Population Data** recitation in the **activity manual** and answer the following questions.

(p. 137) The number of people _____ each year and the number of people who _____ each year determine whether the population is growing in size.

What is fertility rate? (p. 139)

From earlier this term, Yeast are classified in *Domain* _____ and *Kingdom* _____.

Work Ahead for the Laboratory

Read the **Local Habitats** laboratory in the **activity manual** and answer the following questions.

List the five Willamette Valley habitats featured in Part I of the lab:

The left green part of a moss is called a _____ (p. 142).

From earlier in the term, what is the difference between a spore and a seed? Provide an example of a seed-producing plant and an example of a spore-producing plant.

From earlier in the term, slugs along with snails are classified in *Phylum* _____.

Try *Thought Question #9* on p. 148 and check your response in lab.

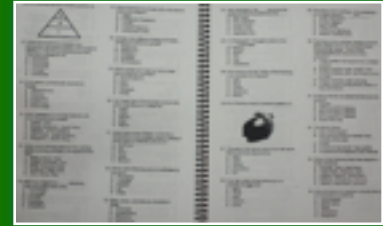
Final Exam Week *Your brain cannot easily form memories (synaptic connections between neurons) without adequate food and sleep. Take care of yourself.*

Work Ahead for the Final Exam

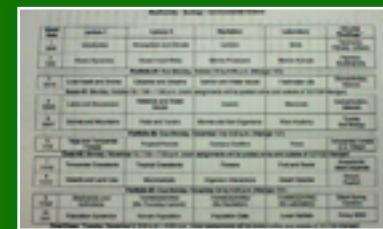
One of the most time effective ways to learn material is to quiz, quiz, and quiz some more. Write down as many possible exam questions as you can think of (using your class materials, the objectives in Appendix A, and last year’s final exam as a guide) and quiz yourself to form memories and practice retrieving that information.

*Thank-you for a fantastic fall term;
 celebrate your successes and
 have a fun and safe winter break!*

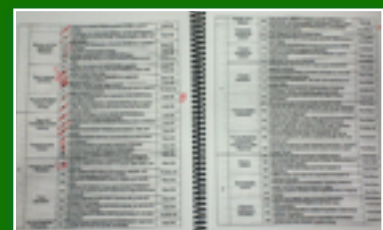
*Final Exam
 Study Hints*



Approximately the first 10 final exam questions are cumulative. Think about things we have covered repeatedly and look at the first 12 questions on last year’s final exam for examples.



Week 7 material can fade in the month leading to the final exam, review that material soon.



Use the objectives in Appendix A to make sure you have good coverage of the material.

Study Questions? email Lesley any day/time.