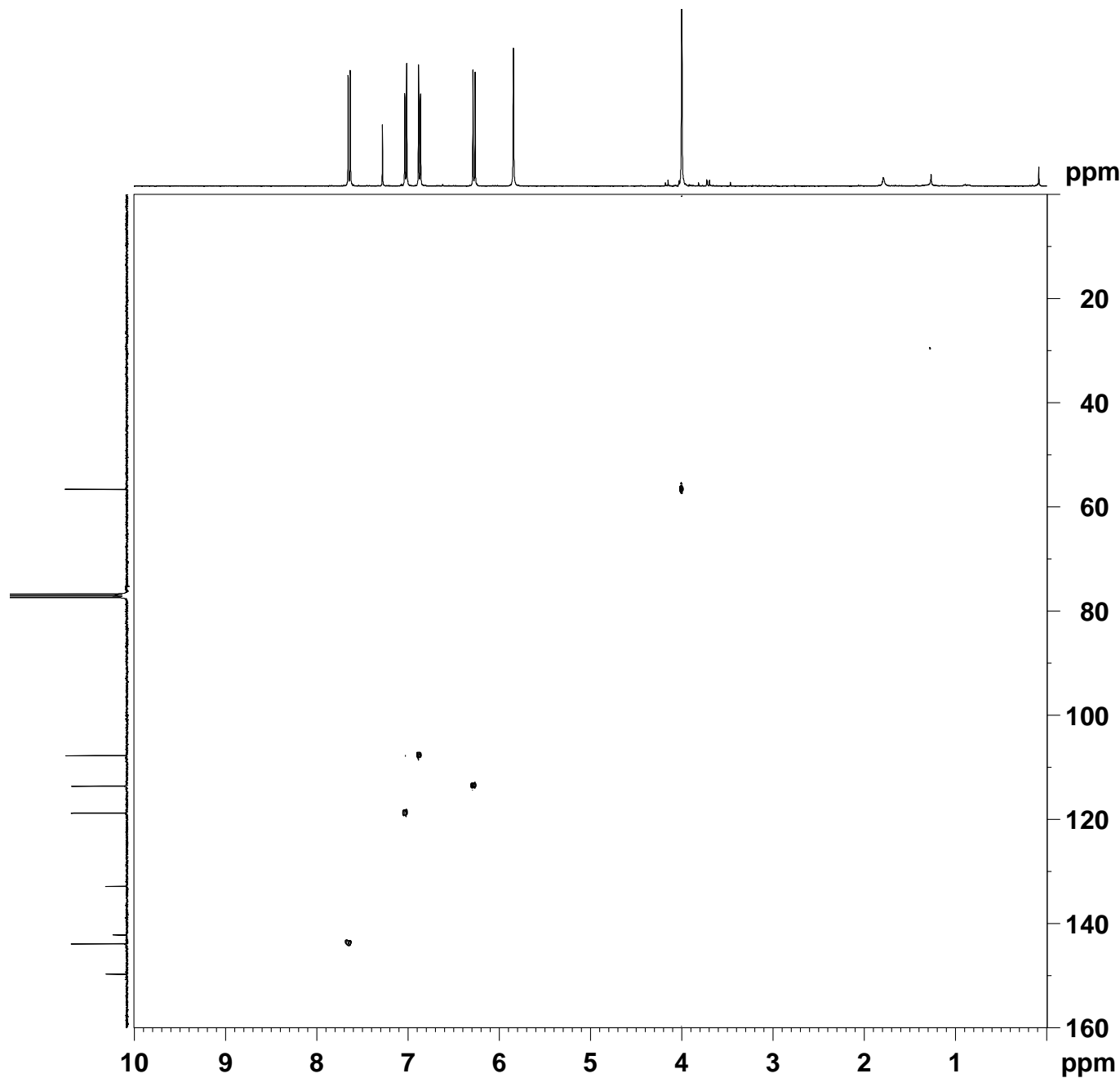


1282-1



```
Current Data Parameters
NAME      1282-1
EXPNO     4
PROCNO    1
DU        /m
USER      quamar

F2 - Acquisition Parameters
Date_     20110111
Time      13.45
INSTRUM   DPX400
PROBHD    5 mm BBO BB-1H
PULPROG   hsqcedetgp
TD         2048
SOLVENT   DMSO
NS         4
DS         2
SWH        4006.410 Hz
FIDRES     1.956255 Hz
AQ         0.2556404 sec
RG         16384
DW         124.800 usec
DE         6.00 usec
TE         298.2 K
CNST2     145.000000
d0         0.00000300 sec
d1         2.00000000 sec
d4         0.00172414 sec
d11        0.03000000 sec
d13        0.00000400 sec
d16        0.00025000 sec
d21        0.00344000 sec
DELTA     0.00215700 sec
DELTA1    0.00071614 sec
IN0       0.00003105 sec
ST1CNT    64
ZGOPTNS

===== CHANNEL f1 =====
NUC1      1H
P1        13.50 usec
p2        27.00 usec
P28       1000.00 usec
PL1       -3.00 dB
SFO1      400.2470012 MHz

===== CHANNEL f2 =====
CPDPRG2   waltz16
NUC2      13C
P3         7.00 usec
p4         14.00 usec
PCPD2     65.00 usec
PL2       -3.00 dB
PL12      16.00 dB
SFO2      100.6497363 MHz

===== GRADIENT CHANNEL =====
GPNAM1    SINE.100
GPNAM2    SINE.100
GP21      80.00 %
GP22      20.10 %
P16       1000.00 usec

F1 - Acquisition parameters
ND0        2
TD         128
SFO1       100.6497 MHz
FIDRES     125.805153 Hz
SW         159.991 ppm
FnMODE     Echo-Antiecho

F2 - Processing parameters
SI         2048
SF         400.2450000 MHz
WDW        QSINE
LB         2
SSB        0.00 Hz
GB         0
PC         1.40

F1 - Processing parameters
SI         1024
MC2        echo-antiecho
SF         100.6416850 MHz
WDW        QSINE
LB         2
SSB        0.00 Hz
GB         0
```