

# Dynamical Models Explaining Social Balance and Evolution of Cooperation

V.A. Traag,<sup>1</sup> P. Van Dooren,<sup>1</sup> and P. De Leenheer<sup>2</sup>

<sup>1</sup>ICTEAM, Université catholique de Louvain

<sup>2</sup>Department of Mathematics, University of Florida

In social networks with positive and negative links the dominant theory of explaining its structure is that of social balance.<sup>1,2</sup> The theory states that a network is balanced if its triads are balanced. Such a balanced network can be split into (at most) two opposing factions with positive links within a faction and negative links between them.<sup>3</sup> Although inherently dynamical, the theory has long remained static, with a focus on finding such partitions.<sup>4,5</sup> Recently however, a dynamical model was introduced<sup>6</sup> which was shown to converge to a socially balanced state for certain symmetric initial conditions.<sup>7</sup> Here we show this does not hold for general (non-symmetric) initial conditions. We propose an alternative model and show that it does converge to a socially balanced state generically. Moreover, in a basic model of evolution of cooperation of indirect reciprocity,<sup>8</sup> the alternative model has an evolutionary advantage compared to the earlier model. The principal difference between the two models can be understood in terms of gossiping: we assume people talk about how others treated them, while the earlier model assumed people talk about what they think of others. Both gossiping and social balance are at the centre of many social phenomena,<sup>9–12</sup> such as norm maintenance,<sup>13</sup> stereotype formation<sup>14</sup> and social conflict,<sup>15</sup> rendering it important to understand their underlying principles.

In balanced triads friends agree in their opinion of a third party, while foes disagree (Fig. 1). Triads that are unbalanced are unstable: they have an incentive to change to reduce the stress<sup>16</sup> inherent to such situations. The central question is how this translates into a dynamical model that converges provably to a socially balanced state for (almost) all initial conditions. Some discrete dynamics have been investigated,<sup>17,18</sup> for which so-called jammed states exist<sup>19</sup> such that no change of sign will improve the degree of social balance. One surprisingly simple model was proven to converge to social balance for certain symmetric initial conditions.<sup>7</sup> The authors assume a complete graph (everybody connected to everybody), with weighted links that change in a continuous manner. Let  $X$  be the matrix of relationships between nodes, so that  $X_{ij}$  is positive whenever node  $i$  considers  $j$  a friend, and that  $X_{ij}$  is negative whenever node  $i$  thinks of  $j$  as an enemy. The changes in these relationships are then modelled as

$$\dot{X} = X^2, \text{ or } \dot{X}_{ij} = \sum_k X_{ik} X_{kj} \quad (1)$$

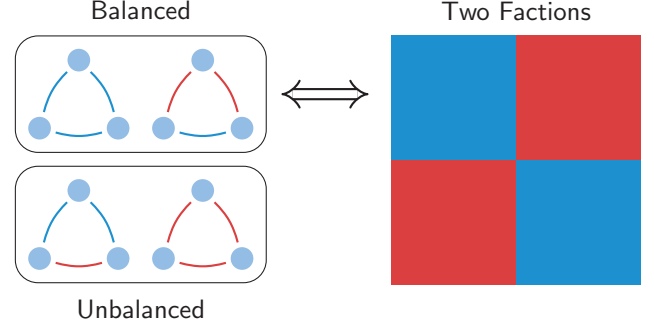


FIG. 1. Social Balance. The two upper triads are balanced, while the two lower triads are unbalanced. According to the structure theorem,<sup>3</sup> a complete graph can be split into two opposing factions, if and only if all triads are balanced. This is represented by the coloured matrix on the right, where blue indicates positive entries, and red negative entries.

where  $\dot{X}$  denotes the time derivative of the matrix  $X$ . The implicit idea for this model is that some gossiping takes place. For example, suppose Bob and Alice are friends, and Bob wants to revise his opinion of John. Bob then asks Alice her opinion of John, and Bob will adopt Alice's opinion. On the other hand, if Bob and Alice are foes, Bob will adopt the opposite of Alice's opinion.

The analysis for symmetric initial conditions is quite straightforward. Given that the initial condition  $X(0) = X^T(0)$ , we can diagonalise it using  $X(0) = U\Lambda(0)U^T$ , where  $U$  is an orthogonal matrix containing the eigenvectors  $u_1, \dots, u_n$  of  $X(0)$  and  $\Lambda(0)$  is a diagonal matrix containing the (real) eigenvalues  $\lambda_1 \geq \lambda_2 \geq \dots \geq \lambda_n$ . It then follows that  $X(t) = U\Lambda(t)U^T$  where  $\Lambda(t)$  is the solution of  $\dot{\Lambda} = \Lambda^2$ . The solution can be given explicitly in terms of  $\lambda_i$  and reads

$$\lambda_i(t) = \frac{\lambda_i(0)}{1 - \lambda_i(0)t} \quad (2)$$

which blows up at time  $t_i^* = \frac{1}{\lambda_i(0)}$  if  $\lambda_i(0) > 0$ . Hence if  $\lambda_1(0) > \lambda_2(0)$  and positive, the largest eigenvalue blows up first. If we normalise by the norm of  $X(t)$ , we obtain that  $\lim_{t \rightarrow t_1^*} \frac{X(t)}{\|X(t)\|} = u_1 u_1^T$ . By looking only at the signs of the links (and not their magnitude), the vector product will correspond exactly to two factions. This result can be generalised to normal initial conditions for which  $X(0)X^T(0) = X^T(0)X(0)$  holds (see SI Theorem 2). Hence, under quite general conditions one obtains social balance.

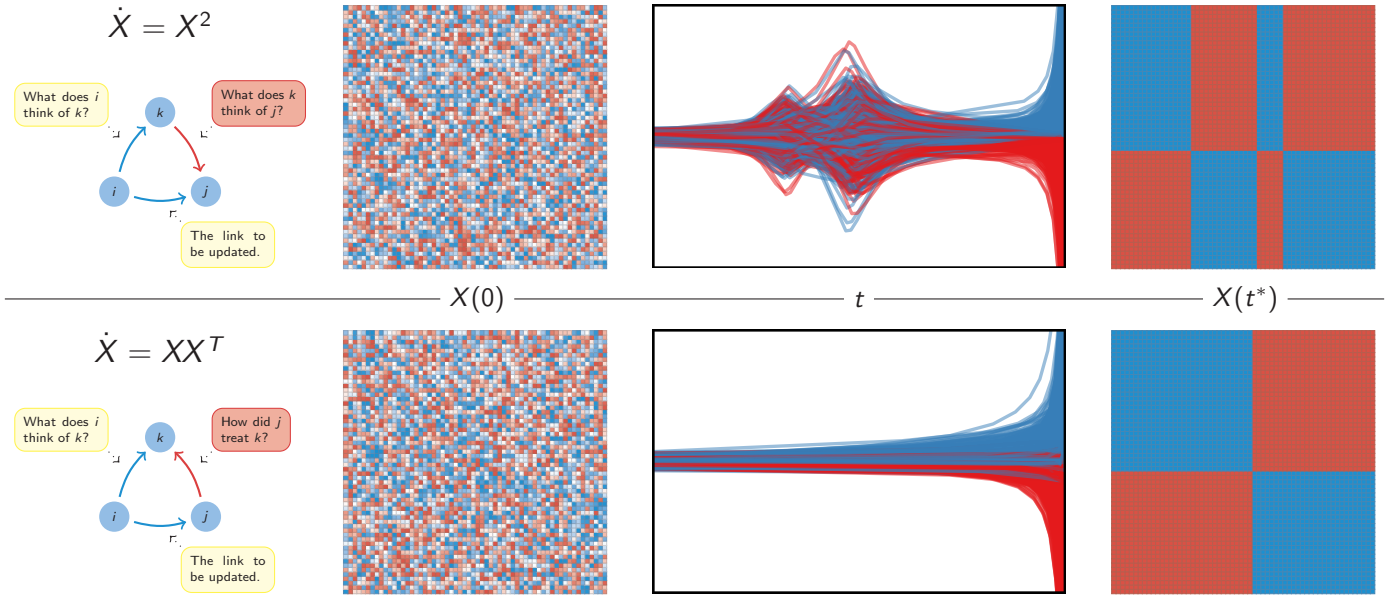


FIG. 2. The two models compared. The first row illustrates what happens generically for the model  $\dot{X} = X^2$ , while the second row displays the results for  $\dot{X} = XX^T$ . Each row contains from left to right: (1) an illustration of the model; (2) the random initial state; (3) the dynamics of the model; and (4) the final state to which the dynamics converge. Blue indicates positive entries, and red negative entries. Although the first model converges to a rank one matrix, it is not socially balanced. The second model does converge generically to social balance. The small bumps in the dynamics for  $\dot{X} = X^2$  are due to complex eigenvalues that show circular behaviour.

However, this result is restricted to symmetric (or strictly speaking, normal) initial conditions. Although the theory of social balance is formulated for undirected networks—hence a symmetric matrix—there is no reason to assume the initial condition should also be symmetric. Indeed, although Bob may like Alice, this feeling need not be mutual. So, let us turn to the analysis of general (non-symmetric) initial conditions.

Unfortunately, for general initial conditions convergence to social balance is no longer guaranteed. To solve the general case we use the Jordan decomposition, which yields  $X(0) = U\Lambda(0)U^{-1}$ , where  $U$  is now no longer orthogonal, and  $\Lambda(0)$  consists of Jordan blocks. The general solution is rather involved (see SI Theorem 3), but for simple Jordan blocks (i.e. all eigenvalues have multiplicity one), the behaviour already becomes apparent.

The dynamics of the real eigenvalues remain as described by Eq. (2). The complex eigenvalues, which correspond to  $2 \times 2$  blocks in  $\Lambda$ , behave quite differently: they tend to 0 asymptotically while describing a circle in the complex plane. Hence, the blow-up behaviour present for the largest positive real eigenvalue remains unaffected. So, as long as there is a real positive eigenvalue, the normalised system still converges to a rank one matrix. However, the eigenvectors  $U$  are no longer orthogonal, and the system converges to  $\lim_{t \rightarrow t^*} \frac{X(t)}{\|X(t)\|} = u_1 v_1^T$ , where  $u_1$  and  $v_1$  are the corresponding right and left eigenvector. This generally does not correspond to a socially balanced state (Fig. 2). Concluding, convergence to social balance

will unlikely be observed for general random initial conditions.

Let us briefly reconsider the implicit gossiping process in the model  $\dot{X} = X^2$ . In our example of Bob, Alice and John, the following happens. Bob asks Alice what *she* thinks of John. Bob takes into account what he thinks of Alice, and adjusts his opinion of John accordingly. However, Alice might not talk about what *she* thinks of John, but about how John treated her, or what he did. This is also what is observed in studies on gossip: it usually concerns what others did, *not* what one thinks of others.<sup>20,21</sup> A reasonable assumption then is that John treats Alice in line with his opinion of Alice: he will treat her badly when he thinks badly of her, and treat her well when he thinks highly of her.

Alternatively, we could consider a type of homophily process:<sup>22,23</sup> people tend to befriend similar people. When Bob seeks to revise his opinion of John, he talks to John about everybody else. For example, suppose Bob likes Alice, while John dislikes her. When Bob and John talk about Alice, they disagree on their opinion of her, and as a result their relationship deteriorates. On the other hand, should they agree, their relationship would improve, and the more they agree, the more the relationship improves. Either way, we arrive at the model

$$\dot{X} = XX^T, \text{ or } \dot{X}_{ij} = \sum_k X_{ik} X_{jk}. \quad (3)$$

Although this is a subtle difference, it is a crucial one, as

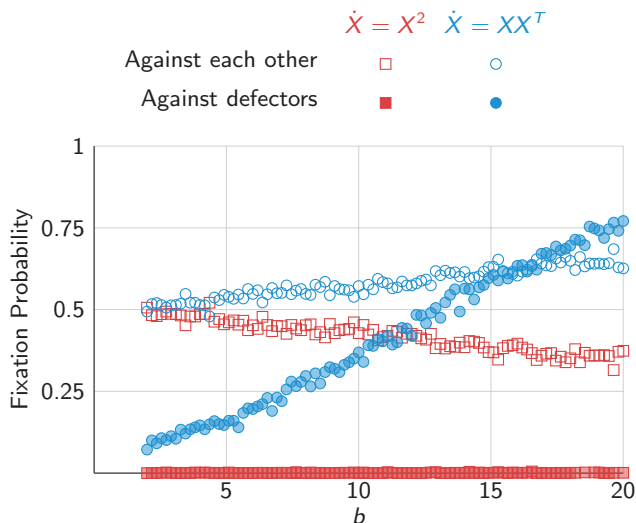


FIG. 3. Fixation probability. Fixation means that a certain type is the only surviving type in the evolutionary dynamics. It shows that the model  $\dot{X} = XX^T$  is more viable against defectors, and has an evolutionary advantage compared to  $\dot{X} = X^2$ .

we will show.

For symmetric conditions both models (1) and (3) are exactly equal. For general conditions, things are quite different, and system (3) converges to a socially balance state. In order to solve this case, we decompose into a symmetric and skew-symmetric part:  $X(t) = S(t) + A(t)$ . Since  $\dot{X} = \dot{X}^T$  the skew-symmetric part remains constant and  $A(t) = A(0) = A_0$ , while the symmetric part obeys  $\dot{S} = (S + A_0)(S - A_0)$ . Introducing  $\hat{S}(t) = e^{-A_0 t} S(t) e^{A_0 t}$  we can simplify this equation to  $\dot{\hat{S}} = \hat{S}^2 + A_0 A_0^T$ . Furthermore, we can diagonalise  $A_0 A_0^T = D^2$  using its eigenvectors  $V$ , such that the diagonalisation has  $\omega_i^2$  on the diagonal where  $\pm i\omega_i$  are the complex eigenvalues of  $A_0$ . Using the theory of Riccati differential equations, we can find an explicit solution of the resulting equation. Assuming  $A_0$  is invertible, we obtain

$$S(t) = -e^{A_0 t} V \dot{P}(t) P^{-1}(t) V^T e^{-A_0 t}, \quad (4)$$

with  $P(t) = \cos(Dt) - D^{-1} \sin(Dt) V^T S(0) V$ . When  $A_0$  is not invertible a similar expression can be provided (see SI Eq. C26). This is valid for  $t = [0, t^*)$  with  $t^*$  the first blow up time, which is always finite for non-zero  $A_0$ . This expression can be used to show that  $\lim_{t \rightarrow t^*} X(t)/\|X(t)\| = ww^T$  for some vector  $w$  (see Theorem 5 in SI) for a dense set of initial conditions  $X(0)$ . Hence the system generically evolves to social balance (Fig. 2).

This has important consequences for many fields in social science. Gossiping is often regarded as fundamental to many social processes and phenomena.<sup>9–12</sup> For example, a classic work<sup>10</sup> on the established and outsiders

found that gossiping was the fundamental driving force for the maintenance of the cohesive network of the established and the exclusion of the outsiders. Our analysis shows that networks typically split into (at most) two mutually antagonistic factions when such gossiping processes take place.

Besides these important areas, reputation and gossiping also appear naturally in the study of the evolution of cooperation. Indirect reciprocity is regarded as one of the main explanations for the breadth of human cooperation.<sup>8</sup> It is based on reputations, usually tacitly assumed to be formed through gossiping. Although many different strategies have been investigated,<sup>24,25</sup> only few works actually study how gossiping shapes reputations.<sup>26,27</sup> Nevertheless, it was observed that gossiping is an effective mechanism for promoting cooperation.<sup>28–30</sup>

We will briefly consider evolutionary dynamics involving the two models. We assume a Prisoner's Dilemma type of game. All agents can either cooperate or defect with one another, and we will assume agent  $i$  will cooperate with agent  $j$  whenever  $X_{ij}(t) > 0$  and defect otherwise. The cost of cooperating is  $c = 1$ , while the benefit of cooperating is  $b > c$ . In this setting it makes little sense to assume relations should be symmetric. After all, whenever somebody cooperates, it may well serve his partner to defect.

We initialise the population with  $n_A = 30$  agents that use  $\dot{X} = X^2$  dynamics (Type A); and  $n_B = 30$  agents that use  $\dot{X} = XX^T$  dynamics (Type B). We let the population evolve according to the payoff until one of the types has become fixated. We repeat this process many times and keep track of how often a certain type has become fixated (see SI section D for details). If types become fixated with probability above 1/2 it indicates an evolutionary advantage. The results are displayed in Fig. 3. When directly competing against each other, type B has an evolutionary advantage over type A, when the benefit is sufficiently high. We have also simulated the situation when each type is playing against defectors (agents that always defect). Type A seems unable to defeat defectors for any  $b < 20$ , while type B performs quite well against them.

To conclude, we have shown that the alternative model  $\dot{X} = XX^T$  (almost) always converges to social balance. Furthermore, it appears that these type of agents have an evolutionary advantage compared to agents using  $\dot{X} = X^2$ , and perform well against defectors. Contrary to other models of indirect reciprocity, not everybody might end up cooperating with everybody, and the population may split into two groups. This provides an interesting connection between social balance theory, gossiping and the evolution of cooperation. Our results may have important ramifications in thinking and modelling in various social science disciplines, for which gossip remains at the nexus.

## ACKNOWLEDGMENTS

We acknowledge support from a grant “Actions de recherche concertées — Large Graphs and Networks” of the “Communauté Française de Belgique” and from the Belgian Network DYSCO (Dynamical Systems, Control, and Optimization), funded by the Interuniversity Attraction

Poles Programme, initiated by the Belgian State, Science Policy Office. P.D.L. wishes to thank VLAC (Vlaams Academisch Centrum) for providing him with a research fellowship during a sabbatical leave from the University of Florida, the Université catholique de Louvain for hosting him as a visiting professor, and the University of Florida for a Faculty Enhancement Opportunity.

- 
- [1] F. Heider, *The Journal of psychology* **21**, 107 (1946).
  - [2] D. Cartwright and F. Harary, *Psychological Review* **63**, 277 (1956).
  - [3] F. Harary, *The Michigan Mathematical Journal* **2**, 143 (1953).
  - [4] P. Doreian and A. Mrvar, *Social Networks* **18**, 149 (1996).
  - [5] V. Traag and J. Bruggeman, *Physical Review E* **80**, 036115 (2009), arXiv:0811.2329.
  - [6] K. Kulakowski, P. Gawronski, and P. Gronek, *International Journal of Modern Physics C* **16**, 707 (2005).
  - [7] S. A. Marvel, J. Kleinberg, R. D. Kleinberg, and S. H. Strogatz, *Proceedings of the National Academy of Sciences of the United States of America* **108**, 1771 (2011).
  - [8] M. A. Nowak and K. Sigmund, *Nature* **437**, 1291 (2005).
  - [9] M. Gluckman, *Current Anthropology* **4**, 307 (1963).
  - [10] N. Elias and J. L. Scotson, *The Established and the Outsiders* (SAGE Publications, London, 1994).
  - [11] E. K. Foster, *Review of General Psychology* **8**, 78 (2004).
  - [12] R. I. M. Dunbar, *Grooming, Gossip, and the Evolution of Language* (Harvard University Press, Cambridge, 1998) p. 242.
  - [13] N. E. Friedkin, *Social Networks* **23**, 167 (2001).
  - [14] S. R. Wert and P. Salovey, *Review of General Psychology* **8**, 122 (2004).
  - [15] G. Labianca, *Academy of Management journal* **41**, 55 (1998).
  - [16] P. S. Bearman and J. Moody, *American Journal of Public Health* **94**, 89 (2004).
  - [17] T. Antal, P. Krapivsky, and S. Redner, *Physical Review E* **72**, 036121 (2005).
  - [18] F. Radicchi, D. Vilone, S. Yoon, and H. Meyer-Ortmanns, *Physical Review E* **75**, 026106 (2007).
  - [19] S. Marvel, S. Strogatz, and J. Kleinberg, *Physical Review Letters* **103**, 198701 (2009), arXiv:0906.2893.
  - [20] F. T. McAndrew, E. K. Bell, and C. M. Garcia, *Journal of Applied Social Psychology* **37**, 1562 (2007).
  - [21] R. Paine, *Man* **2**, 278 (1967).
  - [22] M. McPherson, L. Smith-Lovin, and J. M. Cook, *Annual Review of Sociology* **27**, 415 (2001).
  - [23] R. Durrett and S. A. Levin, *Journal of Economic Behavior & Organization* **57**, 267 (2005).
  - [24] H. Ohtsuki and Y. Iwasa, *Journal of Theoretical Biology* **239**, 435 (2006).
  - [25] H. Brandt and K. Sigmund, *Journal of Theoretical Biology* **231**, 475 (2004).
  - [26] M. Nakamaru and M. Kawata, *Evolutionary Ecology Research* **6**, 261 (2004).
  - [27] V. Traag, P. Van Dooren, and Y. Nesterov, in *IEEE Symposium on Artificial Life 2011* (IEEE, Piscataway, 2011) pp. 154–161.
  - [28] J. Piazza and J. M. Bering, *Evolution and Human Behavior* **29**, 172 (2008).
  - [29] R. D. Sommerfeld, H.-J. Krambeck, and M. Milinski, *Proceedings of the Royal Society B: Biological Sciences* **275**, 2529 (2008).
  - [30] R. D. Sommerfeld, H.-J. Krambeck, D. Semmann, and M. Milinski, *Proceedings of the National Academy of Sciences of the United States of America* **104**, 17435 (2007).
  - [31] R. Horn and C. Johnson, *Matrix Analysis* (Cambridge University Press, Cambridge, 1985).
  - [32] W. Rugh, *Linear system theory* (Prentice Hall, Upper Saddle River, 1996).
  - [33] T. Kato, *Perturbation Theory for Linear Operators* (Springer, New York, 1995) p. 640.
  - [34] A. Bunse-Gerstner, R. Byers, V. Mehrmann, and N. K. Nichols, *Numerische Mathematik* **60**, 1 (1991).
  - [35] G. Still, *Optimization* **49**, 387 (2001).
  - [36] P. De Leenheer and E. D. Sontag, *A note on the monotonicity of matrix Riccati equations*, Tech. Rep. (DIMACS, 2004).
  - [37] M. A. Nowak, *Science* **314**, 1560 (2006).
  - [38] J. Maynard Smith, *Evolution and the Theory of Games* (Cambridge University Press, Cambridge, 1982).
  - [39] W. Hamilton, *Journal of Theoretical Biology* **7**, 1 (1964).
  - [40] R. Axelrod, *The Evolution of Cooperation* (Basic Books, New York, 1985).
  - [41] D. S. Wilson, *Proceedings of the National Academy of Sciences* **72**, 143 (1975).
  - [42] R. D. Alexander, *The Biology of Moral Systems* (Aldine de Gruyter, New York, 1987).
  - [43] E. Fehr and U. Fischbacher, *Evolution and Human Behavior* **25**, 63 (2004).
  - [44] M. A. Nowak and K. Sigmund, *Nature* **393**, 573 (1998).
  - [45] O. Leimar and P. Hammerstein, *Proceedings of the Royal Society B: Biological Sciences* **268**, 745 (2001).
  - [46] M. Milinski, D. Semmann, T. C. Bakker, and H. J. Krambeck, *Proceedings of the Royal Society B: Biological Sciences* **268**, 2495 (2001).
  - [47] H. Ohtsuki and Y. Iwasa, *Journal of theoretical biology* **231**, 107 (2004).
  - [48] H. Mühlenbein and T. Mahnig, in *Foundations of Genetic Algorithms 7* (Morgan Kaufmann Publishers, 2003) pp. 525 – 556.
  - [49] R. S. Sutton and A. G. Barto, *Reinforcement Learning: An Introduction* (The MIT Press, Cambridge, 1998).
  - [50] S. P. Anderson, A. de de Palma, and J.-F. Thisse, *Discrete Choice Theory of Product Differentiation* (The MIT Press, Cambridge, 1992).
  - [51] J. H. Gillespie, *Population Genetics: A Concise Guide* (The John Hopkins University Press, Baltimore, 2004).

### Supplementary Information A: Preliminaries

In this paper we are concerned with certain matrix differential equations of the form

$$\dot{X} = F(X, X^T), \quad (\text{A1})$$

where  $X$  is a real  $n \times n$  matrix, and  $F$  is a one of two specific, smooth functions. These functions are such that it turns out to be advantageous to consider the dynamics of the symmetric and skew-symmetric parts of  $X$ . Recall that

$$\mathbb{R}^{n \times n} = \mathcal{S} \oplus \mathcal{A},$$

where  $\mathcal{S}$  is the linear subspace of real symmetric matrices, and  $\mathcal{A}$  the linear subspace of skew-symmetric matrices. Thus, given any  $X \in \mathbb{R}^{n \times n}$ , we can find unique symmetric  $S \in \mathcal{S}$  and skew-symmetric  $A \in \mathcal{A}$  such that:

$$X = S + A.$$

More explicitly,

$$S = \frac{X + X^T}{2}, \quad A = \frac{X - X^T}{2}.$$

Moreover, using the inner product

$$\langle X, Y \rangle = \text{tr}(XY^T),$$

there holds that

$$\mathcal{A}^\perp = \mathcal{S}. \quad (\text{A2})$$

The norm induced by this inner product is the Frobenius norm:

$$|X|_F = (\text{tr}(XX^T))^{\frac{1}{2}}. \quad (\text{A3})$$

Recall that the Frobenius norm is unitarily invariant, i.e. if  $U$  is orthogonal (i.e.  $UU^T = I_n$ ), then

$$|UXU^T|_F = |X|_F. \quad (\text{A4})$$

For all linear algebra related terminology and properties we refer to [31].

### Supplementary Information B: Equation $\dot{X} = X^2$

Consider the model studied numerically in [6] and analysed for symmetric initial conditions in [7]:

$$\dot{X} = X^2, X(0) = X_0, \quad (\text{B1})$$

where each  $X_{ij}$  is real-valued and denotes the opinion agent  $i$  has about agent  $j$ . Positive values mean that agent  $i$  thinks favourably about  $j$ , whereas negative values mean that  $i$  thinks unfavourably about  $j$ . When  $i = j$ ,  $X_{ii}$  is a measure of self-esteem of agent  $i$ . More explicitly, model (B1) can also be written entrywise:

$$\dot{X}_{ij} = \sum_k X_{ik} X_{kj}. \quad (\text{B2})$$

The opinions are adjusted instantaneously by a specific dynamics which takes some type of gossiping into account. When agent  $i$  wishes to update his opinion about agent  $j$ , he will gossip with a third agent  $k$ . We postulate that  $i$  adjusts his opinion about  $j$ , based on two pieces of information: (i) what agent  $i$  thinks about his gossiping partner  $k$ , that is  $X_{ik}$ , and (ii) what the gossiping partner  $k$  thinks about agent  $j$  they are gossiping about, that is  $X_{kj}$ . The rate of change in  $X_{ij}$  is then proportional to the product of these values. Moreover, we assume that agent  $i$  gossips to all agents in the network in this way, and simply adds all the contributions from these interactions. Thus, if  $i$  perceives  $k$  as a friend (or enemy), and  $k$  in turn perceives  $j$  as a friend as well (respectively enemy), then  $i$  will increase his opinion about  $j$ . This can be summarized by the familiar phrase:

*“Friends of friends are friends; enemies of enemies are friends.”*

Similarly, if  $i$  perceives  $k$  as a friend (or enemy), but  $k$  perceives  $j$  as an enemy (respectively friend), then  $i$  will decrease its opinion about  $j$ , which can be summarized likewise by:

*“Enemies of friends are enemies; friends of enemies are enemies.”*

The same update law is used in case  $i$ ,  $j$  and  $k$  are not necessarily distinct. For example, when  $i = j = k$ , the dynamics imply that self-esteem  $X_{ii}$  is always boosted because it receives a non-negative contribution  $(X^2)_{ii}$  from “gossiping to himself about himself”.

To develop a dynamic theory of social balance, we first review two key ingredients of Heider’s (static) theory on social balancing, namely those of a *balanced triangle* and a *balanced network*:

**Definition 1.** For model (B1), we call a triangle of (not necessarily distinct) agents  $i, j$  and  $k$  *balanced* if

$$X_{ij}X_{ik}X_{kj} > 0. \quad (B3)$$

A network is said to be *balanced* if all triangles of agents in the network are balanced.

It turns out that a balanced network takes on a specific structure, in that at most 2 factions emerge, where members within each faction have positive opinions about each other, but members in different factions have negative opinions about each other. This result is known as the Structure Theorem [2, 3], and we include a short proof for convenience:

**Theorem 1** (Structure Theorem in [2, 3]). *Let  $X$  represent a balanced network. Then up to a permutation of agents, the matrix  $X$  has the following sign structure:*

$$(+)\text{ or } \begin{pmatrix} + & - \\ - & + \end{pmatrix}.$$

*Conversely, if, up to permutation,  $X$  has one of these structures, then it represents a balanced network.*

*Proof.* Let  $X$  be balanced in the sense of Definition 1. Then every triangle  $i, j, k$  is balanced, and in particular when  $i = j = k$ , then:

$$X_{ii} > 0 \text{ for all } i.$$

In other words, all self-esteem values of every agent in a balanced network are positive.

If  $i = j$  and  $k \neq i$ , it follows from the fact that  $X_{ii} > 0$ , that also:

$$X_{ik}X_{ki} > 0,$$

and thus the opinions between every pair of agents in a balanced network, are of the same sign. We define the relation

$$i \sim j \iff X_{ij}X_{ji} > 0,$$

and claim it is an equivalence relation on the set of agents. That  $i \sim i$  holds, and that  $i \sim j$  implies that  $j \sim i$  has already been established. What is left to show is that  $i \sim j$  and  $j \sim k$  implies that  $i \sim k$ . But this follows immediately from (B3). Now consider the equivalence classes of the set of agents under this equivalence relation. Up to a relabelling of agents, the sign structure of  $X$  takes the following block form:

$$\begin{pmatrix} + & - & \dots & - \\ - & + & \dots & - \\ \vdots & \vdots & \ddots & \vdots \\ - & - & \dots & + \end{pmatrix},$$

where there are  $p$  square, diagonal blocks, such that the sum of the sizes of all these blocks equals  $n$ , the number of agents. Each block corresponds to the subset of all agents belonging to a single equivalence class of the equivalence relation introduced earlier. We claim that:

$$p \leq 2.$$

If not, then there would be at least 3 diagonal blocks. Pick 3 arbitrary agents  $i, j$  and  $k$  from 3 distinct equivalence classes. Then according to the structure of  $X$ , there holds that  $X_{ij}X_{ik}X_{ki} < 0$ , which contradicts (B3).

The proof of the converse statement is immediate. □

The basic question in this context is whether or not the solutions of (B1) evolve towards a state which corresponds to a balanced network.<sup>1</sup>

There is some hope that this might occur since according to (B2),  $X_{ij}$  is updated in the direction of the sign of  $X_{ik}X_{kj}$ . Nevertheless, other terms in the sum in (B2) could have opposite effects, and thus it is not clear what will happen in the long run.

We shall start our investigation for the special case that  $X_0$  is normal (i.e.  $X_0X_0^T = X_0^TX_0$ ), and obtain a sufficient condition on  $X_0$  under which the network balances. In [7], the special case where  $X_0$  is symmetric was considered, and there it was shown that the network does indeed achieve balance, provided the largest eigenvalue of  $X_0$  is positive and has an eigenvector with only nonzero entries (the latter condition is generically satisfied). Here we will first show that if  $X_0$  is normal, and has a positive, real eigenvalue with a corresponding eigenvector that has only nonzero entries, then the same conclusion holds. Our results therefore extend those of [7] to the case where  $X_0$  is normal, rather than symmetric.

### 1. Normal initial condition

We start by defining

$$\mathcal{N} = \{X \in \mathbb{R}^{n \times n} | XX^T = X^TX\},$$

the set of real, normal matrices.

**Lemma 1.** *The set  $\mathcal{N}$  is invariant for system (B1).*

*Proof.* Let  $X_0$  be an arbitrary matrix in  $\mathcal{N}$ , and let  $X(t)$  denote the solution of (B1). Then

$$\frac{d}{dt}(X(t)X^T(t)) = \dot{X}(t)X^T(t) + X(t)\dot{X}^T(t) = X^2(t)X^T(t) + X(t)(X^T(t))^2,$$

and

$$\frac{d}{dt}(X^T(t)X(t)) = (X^T(t))^2X(t) + X^T(t)X^2(t).$$

Subtracting and evaluating at  $t = 0$  yields:

$$\frac{d}{dt}(X(t)X^T(t) - X^T(t)X(t))|_{t=0} = 0,$$

because  $X(0) \in \mathcal{N}$ . □

Recall that normal matrices are (block)-diagonalizable with blocks of size at most 2 by an orthogonal transformation:

**Lemma 2.** *If  $X_0 \in \mathcal{N}$ , then there exists an orthogonal  $U$  such that:*

$$U^TX_0U = \begin{pmatrix} A_1 & \dots & 0 & 0 & \dots & 0 \\ \vdots & \ddots & \vdots & \vdots & \ddots & \vdots \\ 0 & \dots & A_k & 0 & \dots & 0 \\ 0 & \dots & 0 & B_1 & \dots & 0 \\ \vdots & \ddots & \vdots & \vdots & \ddots & \vdots \\ 0 & \dots & 0 & 0 & \dots & B_l \end{pmatrix} =: \Lambda_0,$$

where each  $A_i$  is a real  $1 \times 1$  block, and each  $B_j$  a real  $2 \times 2$  block of the form:

$$A_i = (a_i) \text{ and } B_j = \begin{pmatrix} \alpha_j & \beta_j \\ -\beta_j & \alpha_j \end{pmatrix}, \text{ with } \beta_j \neq 0.$$

---

<sup>1</sup> A minor technical issue is that the solution  $X(t)$  of (B1) often blows up in finite time  $\bar{t}$  as we shall see later. To resolve this problem we investigate the sign pattern of the matrix limit

$\lim_{t \rightarrow \bar{t}} X(t)/|X(t)|_F$  instead, and say that the network evolves to a balanced state, if this matrix limit is balanced.

We have the following simple observation:

**Lemma 3.** *Let  $X_0 \in \mathcal{N}$ , and let  $(U, \Lambda_0)$  be as in Lemma 2. If  $\Lambda(t)$  is the solution to the initial value problem  $\dot{\Lambda} = \Lambda^2$ ,  $\Lambda(0) = \Lambda_0$ , then*

$$X(t) := U\Lambda(t)U^T,$$

*is the solution to (B1).*

*Proof.* Note that  $X(0) = U\Lambda_0U^T = X_0$ , as required, and that multiplying  $\dot{\Lambda} = \Lambda^2$  by  $U$  and  $U^T$  on the left and right respectively, yields that:

$$\frac{d}{dt} (U\Lambda U^T) = (U\Lambda U^T)^2,$$

which expresses that  $X(t) = U\Lambda(t)U^T$  satisfies the equation  $\dot{X} = X^2$ .  $\square$

This Lemma shows it is sufficient to solve system (B1) in case of scalar  $X$  or in case of a specific,  $2 \times 2$ , normal matrix  $X$ . The scalar case is easy to solve: the solution of  $\dot{x} = x^2$ ,  $x(0) = x_0$ , is

$$x(t) = \frac{x_0}{1 - x_0 t}, \quad (B4)$$

which is easily verified, so we turn to the  $2 \times 2$  case by considering:

$$\dot{X} = X^2, \quad X(0) = \begin{pmatrix} \alpha & \beta \\ -\beta & \alpha \end{pmatrix}, \quad \text{where } \beta > 0. \quad (B5)$$

**Lemma 4.** *The forward solution  $X(t)$  of (B5) is defined for all  $t \in [0, +\infty)$ , and*

$$\lim_{t \rightarrow +\infty} X(t) = 0 \quad \text{and} \quad \lim_{t \rightarrow +\infty} \frac{X(t)}{|X(t)|_F} = -\frac{\sqrt{2}}{2} I_2.$$

*Proof.* Let

$$X_0 = S_0 + A_0, \quad S_0 = \alpha I_2, \quad A_0 = \beta J_2. \quad (B6)$$

where

$$J_2 = \begin{pmatrix} 0 & 1 \\ -1 & 0 \end{pmatrix}.$$

Then the solution  $X(t)$  of (B5) can be decomposed as  $S(t) + A(t)$ , where

$$\dot{S} = S^2 + A^2, \quad S(0) = S_0, \quad (B7)$$

$$\dot{A} = AS + SA, \quad A(0) = A_0. \quad (B8)$$

Note that (B7) is a matrix Riccati differential equation with the property that the set

$$\mathcal{L} := \{sI_2 + aJ_2 | s, a \in \mathbb{R}\},$$

is an invariant set under the flow. Therefore it suffices to solve the scalar Riccati differential equation corresponding to the dynamics of the scalar coefficients  $s$  and  $a$ :

$$\dot{s} = s^2 - a^2, \quad s(0) = \alpha, \quad (B9)$$

$$\dot{a} = 2as, \quad a(0) = \beta, \quad (B10)$$

Let us determine the orbits of system (B9) – (B10), which are given by solutions to the homogeneous differential equation:

$$\frac{da}{ds} = \frac{2\left(\frac{a}{s}\right)}{1 - \left(\frac{a}{s}\right)^2}.$$



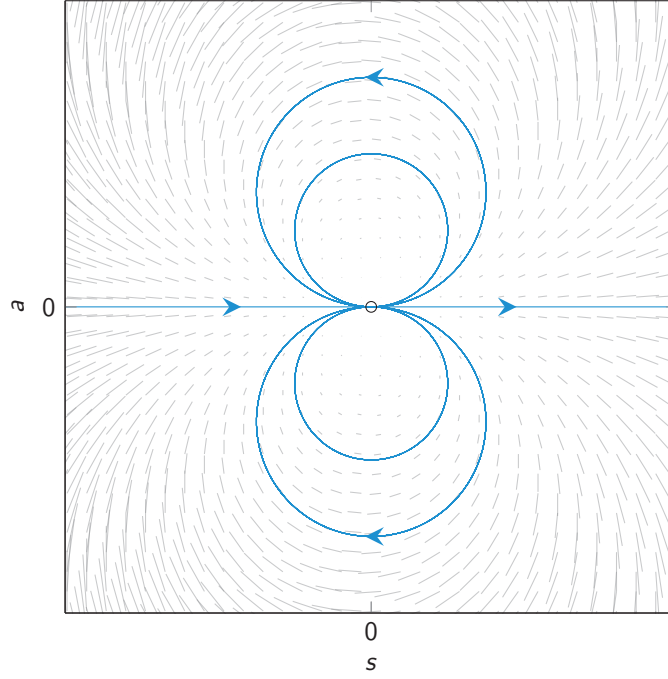


FIG. 4. Phase portrait of system (B9) – (B10). Circular orbits in the upper half plane ( $a > 0$ ) are traversed counter clockwise, whereas circular orbits in the lower half plane ( $a < 0$ ) are traversed clockwise.

Set  $z = a/s$ . Then  $z$  satisfies the following equation:

$$\frac{dz}{ds} = \frac{da}{ds} \frac{1}{s} - \frac{a}{s^2} = \frac{1}{s} \left( \frac{z(1+z^2)}{1-z^2} \right),$$

a separable equation, whose solution is given implicitly by:

$$\frac{z}{s(1+z^2)} = c,$$

where  $c$  is an integration constant. Replacing  $z$  by  $a/s$ , we obtain after some algebraic manipulations, that the orbits of system (B9) – (B10) are given by the circles:

$$s^2 + \left( a - \frac{1}{2c} \right)^2 = \left( \frac{1}{2c} \right)^2 \text{ if } c \neq 0,$$

which are centered at  $(0, 1/2c)$  and pass through  $(0, 0)$ , and by

$$a = 0 \text{ if } c = 0.$$

The phase portrait of system (B9) – (B10) is illustrated in Figure 4.

Orbits in the upper-half plane ( $a > 0$ ) are traversed counter-clock-wise, whereas orbits in the lower-half-plane ( $a < 0$ ) are traversed clock-wise. In particular, all solutions  $(s(t), a(t))$  of system (B9) – (B10), not starting on the  $s$ -axis, converge to zero as  $t \rightarrow +\infty$ , and approach the origin in the second quadrant for solutions in the upper-half-plane, and in the third quadrant for solutions in the lower-half-plane. Moreover, since the  $s$ -axis is the tangent line to every circular orbit at the origin, the slopes  $a(t)/s(t)$  converge to 0 along every solution:

$$\lim_{t \rightarrow +\infty} \frac{a(t)}{s(t)} = 0. \quad (\text{B11})$$

Consequently, the forward solution  $X(t)$  of (B5) satisfies:

$$\lim_{t \rightarrow +\infty} X(t) = \lim_{t \rightarrow +\infty} S(t) + A(t) = \lim_{t \rightarrow +\infty} \begin{pmatrix} s(t) & a(t) \\ -a(t) & s(t) \end{pmatrix} = 0,$$

and by (B11), it follows that

$$\lim_{t \rightarrow +\infty} \frac{X(t)}{|X(t)|_F} = \lim_{t \rightarrow +\infty} \frac{\begin{pmatrix} s(t) & a(t) \\ -a(t) & s(t) \end{pmatrix}}{\sqrt{2}|s(t)|\sqrt{1+(a(t)/s(t))^2}} = -\frac{\sqrt{2}}{2}I_2.$$

□

Combining Lemma 3 and 4 yields our main result in the normal case:

**Theorem 2.** *Let  $X_0 \in \mathcal{N}$ , and let  $(U, \Lambda_0)$  be as in Lemma 2. Define*

$$\bar{t}_i = \begin{cases} 1/a_i & \text{if } a_i > 0 \\ +\infty & \text{if } a_i \leq 0 \end{cases} \quad \text{for all } i = 1, \dots, k,$$

and let

$$\bar{t} = \min_i \bar{t}_i.$$

Then the forward solution  $X(t)$  of (B1) is defined for  $[0, \bar{t})$ .

If there is a unique  $i^* \in \{1, \dots, k\}$  such that  $\bar{t} = \bar{t}_{i^*}$  is finite, then

$$\lim_{t \rightarrow \bar{t}_{i^*}^-} \frac{X(t)}{|X(t)|_F} = U_{i^*} U_{i^*}^T,$$

where  $U_{i^*}$  is the  $i^*$ th column of  $U$ , an eigenvector corresponding to eigenvalue  $a_{i^*}$  of  $X_0$ .

*Proof.* Consider the initial value problem:

$$\dot{\Lambda} = \Lambda^2, \quad \Lambda(0) = \Lambda_0.$$

By Lemma 4 its solution is given by

$$\Lambda(t) = \begin{pmatrix} \frac{a_1}{1-a_1 t} & \dots & 0 & 0 & \dots & 0 \\ \vdots & \ddots & \vdots & \vdots & \ddots & \vdots \\ 0 & \dots & \frac{a_k}{1-a_k t} & 0 & \dots & 0 \\ 0 & \dots & 0 & X_1(t) & \dots & 0 \\ \vdots & \ddots & \vdots & \vdots & \ddots & \vdots \\ 0 & \dots & 0 & 0 & \dots & X_l(t) \end{pmatrix},$$

where for all  $j = 1, \dots, l$ ,  $X_j(t)$  is the forward solution of (B5), which is defined for all  $t$  in  $[0, +\infty)$ , and converges to 0 as  $t \rightarrow +\infty$  by Lemma 4.

This clearly shows that  $\Lambda(t)$  is defined in forward time for  $t$  in  $[0, \bar{t})$ . Since by Lemma 3, the solution of (B1) is given by  $X(t) = U\Lambda(t)U^T$ ,  $X(t)$  is also defined in forward time for  $t$  in  $[0, \bar{t})$ . It follows from (A3) that

$$\frac{X(t)}{|X(t)|_F} = U \frac{\Lambda(t)}{|\Lambda(t)|_F} U^T.$$

If  $i^* \in \{1, \dots, k\}$  is the unique value such that  $\bar{t} = \bar{t}_{i^*}$ , then using (A4):

$$\lim_{t \rightarrow \bar{t}_{i^*}^-} \frac{X(t)}{|X(t)|_F} = U \lim_{t \rightarrow \bar{t}_{i^*}^-} \frac{\Lambda(t)}{|\Lambda(t)|_F} U^T = U e_{i^*} e_{i^*}^T U^T = U_{i^*} U_{i^*}^T,$$

where  $e_{i^*}$  denotes the  $i^*$ th standard unit basis vector of  $\mathbb{R}^n$ . □

*Remark 1.* Theorem 2 provides a sufficient condition guaranteeing that social balance in the sense of Definition 1 is achieved: If  $X_0$  has a simple, positive, real eigenvalue  $a_{i^*}$ , and if no entry of the eigenvector  $U_{i^*}$  is zero, then the network becomes balanced. Indeed, there holds that, up to a permutation of its entries, the sign pattern of the eigenvector  $U_{i^*}$  is either:

$$U_{i^*} = (+) \text{ or } (-) \implies U_{i^*} U_{i^*}^T = (+),$$

or

$$U_{i*} = \begin{pmatrix} + \\ - \end{pmatrix} \implies U_{i*} U_{i*}^T = \begin{pmatrix} + & - \\ - & + \end{pmatrix}.$$

In either case, Theorem 1 implies that the normalized state of the system becomes balanced in finite time.

This result therefore extends the result of [7] to the case where  $X_0$  is normal, rather than symmetric. As we will see in the next subsection, the class of normal initial conditions is generically the largest class of initial conditions for which this is the case.

## 2. Generic initial condition

Although Theorem 2 provides a sufficient condition for the emergence of social balance, it requires that the initial condition  $X_0$  is normal. But the set  $\mathcal{N}$  of normal matrices has measure zero in the set of all real  $n \times n$  matrices, and thus the question arises if social balance will arise for non-normal initial conditions as well. We investigate this issue here, and will see that generically, social balance is not achieved.

If  $X_0$  is a general real  $n \times n$  matrix, we can put it in real Jordan canonical form by means of a similarity transformation:

$$X(0) = T\Lambda_0 T^{-1} := T \begin{pmatrix} A_1 & \dots & 0 & 0 & \dots & 0 \\ \vdots & \ddots & \vdots & \vdots & \ddots & \vdots \\ 0 & \dots & A_k & 0 & \dots & 0 \\ 0 & \dots & 0 & B_1 & \dots & 0 \\ \vdots & \ddots & \vdots & \vdots & \ddots & \vdots \\ 0 & \dots & 0 & 0 & \dots & B_l \end{pmatrix} T^{-1}, \quad TT^{-1} = I_n, \quad (\text{B12})$$

where

$$A_i = \begin{pmatrix} a_i & 1 & \dots & 0 \\ 0 & a_i & \ddots & 0 \\ \vdots & \vdots & \ddots & \vdots \\ 0 & 0 & \dots & a_i \end{pmatrix}, \quad B_j = \begin{pmatrix} C_j & I_2 & \dots & 0 \\ 0 & C_j & \ddots & 0 \\ \vdots & \vdots & \ddots & \vdots \\ 0 & 0 & \dots & C_j \end{pmatrix}, \quad C_j = \begin{pmatrix} \alpha_j & \beta_j \\ -\beta_j & \alpha_j \end{pmatrix}, \quad \beta_j \neq 0. \quad (\text{B13})$$

There holds that:

**Lemma 5.** *Let  $X_0 \in \mathbb{R}^{n \times n}$ , and let  $(T, \Lambda_0)$  be as in (B12). If  $\Lambda(t)$  is the solution to the initial value problem  $\dot{\Lambda} = \Lambda^2$ ,  $\Lambda(0) = \Lambda_0$ , then*

$$X(t) := T\Lambda(t)T^{-1},$$

*is the solution to (B1).*

*Proof.* Note that  $X(0) = T\Lambda_0 T^{-1} = X_0$ , as required, and that multiplying  $\dot{\Lambda} = \Lambda^2$  by  $T$  and  $T^{-1}$  on the left and right respectively, yields that:

$$\frac{d}{dt} (T\Lambda T^{-1}) = (T\Lambda T^{-1})^2,$$

which expresses that  $X(t) = T\Lambda(t)T^{-1}$  satisfies the equation  $\dot{X} = X^2$ . □

This Lemma shows that it is sufficient to solve system (B1) in case of specific block-triangular  $X$  of the form  $A_i$  or  $B_j$  as in (B13). To deal with the first form  $A_i$ , we first we consider more general, triangular Toeplitz initial conditions:

$$X(0) = \begin{pmatrix} x_1(0) & x_2(0) & x_3(0) & \dots & x_n(0) \\ 0 & x_1(0) & x_2(0) & \dots & x_{n-1}(0) \\ \vdots & \vdots & \ddots & \ddots & \vdots \\ 0 & 0 & \dots & x_1(0) & x_2(0) \\ 0 & 0 & \dots & 0 & x_1(0) \end{pmatrix}, \quad x_i(0) \text{ reals}, \quad (\text{B14})$$

and denote  $\mathcal{TT} = \{X \mid X \text{ is of the form (B14)}\}$ . It turns out that this is an invariant set for the system:

**Lemma 6.** *The set  $\mathcal{TT}$  is invariant for system (B1).*

*Proof.* It is easily verified that if  $X$  belongs to  $\mathcal{TT}$ , then so does  $X^2$ , from which the proof follows.  $\square$

We use this Lemma to solve equation (B1) in case  $X(0)$  is a Jordan block.

**Lemma 7.** *Let  $X(0) \in \mathcal{TT}$  with*

$$x_i(0) = \begin{cases} a \neq 0 & \text{if } i = 1 \\ 1 & \text{if } i = 2 \\ 0 & \text{otherwise} \end{cases}.$$

*Then the forward solution  $X(t)$  of (B1) is defined on  $[0, t^*)$  where  $t^* = 1/a$  if  $a > 0$  and on  $t^* = \infty$  if  $a \leq 0$ , belongs to  $\mathcal{TT}$ , and satisfies*

$$x_i(t) = p_i \left( \frac{1}{1-at} \right), \quad t \in [0, t^*),$$

*where each  $p_i(z)$  is a polynomial of degree  $i$ :*

$$p_i(z) = \begin{cases} az & \text{if } i = 1 \\ \frac{1}{a^{i-2}} z^i + \dots + c_i z^2 & \text{otherwise} \end{cases}, \quad (\text{B15})$$

*where  $c_i$  is some real constant, so that  $p_i(z)$  has no constant or first order terms when  $i > 1$ .*

*Proof.* First note that system (B1) can be solved recursively, starting with  $x_1(t)$ , followed by  $x_2(t), x_3(t), \dots$ . Only the first equation for  $x_1$  is nonlinear, whereas the equations for  $x_2, x_3, \dots$  are linear. To see this, we write these equations:

$$\dot{x}_i = \begin{cases} x_1^2, & x_1(0) = a \text{ if } i = 1 \\ (2x_1(t))x_2, & x_2(0) = 1 \text{ if } i = 2 \\ (2x_1(t))x_i + \sum_{k=2}^{i-1} x_k(t)x_{i-(k-1)}(t), & x_i(0) = 0 \text{ if } i > 2 \end{cases}. \quad (\text{B16})$$

The forward solution for  $x_1$  is:

$$x_1(t) = \frac{a}{1-at}, \quad t \in [0, t^*),$$

which establishes the result if  $i = 1$ . The forward solution for  $x_2$  is:

$$x_2(t) = \frac{1}{(1-at)^2}, \quad t \in [0, t^*),$$

which establishes the result if  $i = 2$ . If  $i > 2$ , we obtain the proof by induction on  $n$ . Assume the result holds for  $i = 1, \dots, n$ , for some  $n \geq 2$ , and consider the equation for  $x_{n+1}$ . Using that  $x_n(0) = 0$  for  $n \geq 2$ , the solution is given by:

$$x_{n+1}(t) = e^{\int_0^t 2x_1(s)ds} \left[ 0 + \int_0^t \left( \sum_{k=2}^n x_k(s)x_{n-k+2}(s) \right) e^{\int_0^s -2x_1(\tau)d\tau} ds \right].$$

Since

$$e^{\int_0^t 2x_1(s)ds} = x_2(t) = \frac{1}{(1-at)^2}, \text{ and thus } e^{\int_0^s -2x_1(\tau)d\tau} = 1/x_2(s) = (1-as)^2,$$

there follows that:

$$x_{n+1}(t) = \frac{1}{(1-at)^2} \left[ \int_0^t \left( \sum_{k=2}^n p_k(1/(1-as)) p_{n-k+2}(1/(1-as)) \right) (1-as)^2 ds \right].$$

Since the polynomials appearing in the integral take the form of (B15), they are all missing first order and constant terms, and thus there follows that:

$$\begin{aligned} x_{n+1}(t) &= \frac{1}{(1-at)^2} \left[ \int_0^t \left( \sum_{k=2}^n \frac{1}{a^{n-2}} \frac{1}{(1-as)^{n+2}} + \cdots + c_k c_{n-k+2} \frac{1}{(1-as)^4} \right) (1-as)^2 ds \right] \\ &= \frac{1}{(-a)(1-at)^2} \left[ \frac{(n-1)}{a^{n-2}} \frac{-1}{(n-1)(1-as)^{n-1}} + \cdots + \frac{K_{n+1}}{(1-as)} \right]_{s=0}^{s=t} \\ &= \frac{1}{a^{n-1}} \frac{1}{(1-at)^{n+1}} + \cdots + \frac{c_{n+1}}{(1-at)^2}, \quad t \in [0, t^*), \end{aligned}$$

where  $K_{n+1}$  and  $c_{n+1}$  are certain constants (which are related in some way which is irrelevant for what follows). This shows that  $x_{n+1}(t)$  is indeed of the form  $p_{n+1}(1/(1-at))$  with  $p_{n+1}(z)$  as in (B15).  $\square$

Next we consider equation (B1) in case  $X(0)$  is a block triangular Toeplitz initial condition:

$$X(0) = \begin{pmatrix} B_1(0) & B_2(0) & B_3(0) & \cdots & B_n(0) \\ 0 & B_1(0) & B_2(0) & \cdots & B_{n-1}(0) \\ \vdots & \vdots & \ddots & \ddots & \vdots \\ 0 & 0 & \cdots & B_1(0) & B_2(0) \\ 0 & 0 & \cdots & 0 & B_1(0) \end{pmatrix}, \quad B_i(0) = \begin{pmatrix} \alpha_i & \beta_i \\ -\beta_i & \alpha_i \end{pmatrix}, \quad \alpha_i, \beta_i \text{ reals}, \quad (\text{B17})$$

and denote  $\mathcal{BT}\mathcal{T} = \{X \mid X \text{ is of the form (B17)}\}$ . There holds that:

**Lemma 8.** *The set  $\mathcal{BT}\mathcal{T}$  is invariant for system (B1).*

*Proof.* It is easily verified that if  $X$  belongs to  $\mathcal{BT}\mathcal{T}$ , then so does  $X^2$ , from which the proof follows.  $\square$

We use this Lemma to solve equation (B1) in case  $X(0)$  is a real Jordan block corresponding to a pair of eigenvalues  $\alpha \pm j\beta$ .

**Lemma 9.** *Let  $X(0) \in \mathcal{BT}\mathcal{T}$  with*

$$B_i(0) = \begin{cases} \begin{pmatrix} \alpha & \beta \\ -\beta & \alpha \end{pmatrix} & \text{if } i = 1 \\ I_2 & \text{if } i = 2 \\ 0 & \text{otherwise} \end{cases}.$$

*Then the forward solution  $X(t)$  of (B1) is defined on  $[0, +\infty)$ , and it belongs to  $\mathcal{BT}\mathcal{T}$ .*

*Proof.* Just like in the proof of Proposition 7, we note that system (B1) can be solved recursively, starting with  $X_1(t)$ , followed by  $X_2(t), X_3(t), \dots$ . Only the first equation for  $X_1$  is nonlinear, whereas the equations for  $X_2, X_3, \dots$  are linear. To see this, we write these equations:

$$\dot{X}_i = \begin{cases} X_1^2, & X_1(0) = \begin{pmatrix} \alpha & \beta \\ -\beta & \alpha \end{pmatrix} & \text{if } i = 1 \\ (2X_1(t))X_2, & X_2(0) = I_2 & \text{if } i = 2 \\ (2X_1(t))X_i + \sum_{k=2}^{i-1} X_k(t)X_{i-(k-1)}(t), & X_i(0) = 0 & \text{if } i > 2 \end{cases}. \quad (\text{B18})$$

Here we have used the fact that  $X_1 X_i + X_i X_1 = 2X_1 X_i$ , since any two matrices of the form

$$\begin{pmatrix} p & q \\ -q & p \end{pmatrix}, \quad p, q \text{ reals},$$

commute, and since by Lemma 8, the matrices  $X_i(t)$  are of this form.

By Lemma 4, the forward solution for  $X_1(t)$  is defined for all  $t$  in  $[0, +\infty)$  (and in fact, converges to zero as  $t \rightarrow +\infty$ ).

Since the  $X_1(t)$  commute for every pair of  $t$ 's, the forward solution for  $X_2(t)$  is given by [32]:

$$X_2(t) = e^{\int_0^t 2X_1(s)ds} \cdot I_2 = e^{\int_0^t 2X_1(s)ds}, \quad t \in [0, +\infty),$$

where this solution exists for all forward times  $t$  because  $X_1(t)$  is bounded and continuous. Similarly, the forward solution for  $X_i(t)$  when  $i > 2$ , is given by the variation of constants formula:

$$X_i(t) = X_2(t) \left[ \int_0^t X_2^{-1}(s) \left( \sum_{k=2}^{i-1} X_k(s) X_{i-(k-1)}(s) \right) ds \right], \quad t \in [0, +\infty) \text{ when } i > 2,$$

where these solutions are recursively defined for all forward times because the formula only involves integrals of continuous functions.  $\square$

Combining Lemma 5 and 9, puts us in a position to state and prove our main result:

**Theorem 3.** *Let  $X(0) \in \mathbb{R}^{n \times n}$  and  $(T, \Lambda_0)$  as in (B12) with (B13). Let  $a_1 > a_2 \geq \dots \geq a_k$  with  $a_1 > 0$  a simple eigenvalue with corresponding right and left-eigenvectors  $U_1$  and  $V_1^T$  respectively:*

$$X(0)U_1 = a_1 U_1 \text{ and } V_1^T X(0) = a_1 V_1^T.$$

*Then the forward solution  $X(t)$  of (B1) is defined for  $[0, 1/a_1)$ , and*

$$\lim_{t \rightarrow 1/a_1} \frac{X(t)}{|X(t)|_F} = \frac{U_1 V_1^T}{|U_1 V_1^T|_F}.$$

*Proof.* Consider the initial value problem:

$$\dot{\Lambda} = \Lambda^2, \quad \Lambda(0) = \Lambda_0$$

By Lemma 5 its solution is given by

$$\Lambda(t) = \begin{pmatrix} A_1(t) & \dots & 0 & 0 & \dots & 0 \\ \vdots & \ddots & \vdots & \vdots & \ddots & \vdots \\ 0 & \dots & A_k(t) & 0 & \dots & 0 \\ 0 & \dots & 0 & B_1(t) & \dots & 0 \\ \vdots & \ddots & \vdots & \vdots & \ddots & \vdots \\ 0 & \dots & 0 & 0 & \dots & B_l(t) \end{pmatrix},$$

where for all  $i = 1, \dots, k$ ,  $A_i(t)$  is the forward solution of (B1) with  $A_i(0)$  of the form  $A_i$  in (B13), which by Lemma 7 is defined for all  $t \in [0, 1/a_i)$ . Since  $a_1 > a_2 \geq \dots \geq a_k$ ,  $A_1(t)$  blows up first when  $t \rightarrow 1/a_1$ . The matrices  $B_j(t)$ ,  $j = 1, \dots, l$ , are the forward solution of (B1) with  $B_j(0)$  of the form  $B_j$  in (B13), and by Lemma 9, they are defined for all  $t$  in  $[0, +\infty)$ .

This clearly shows that  $\Lambda(t)$  is defined in forward time for  $t$  in  $[0, 1/a_1)$ . Since by Lemma 5, the solution of (B1) is given by  $X(t) = T\Lambda(t)T^{-1}$ ,  $X(t)$  is also defined in forward time for  $t$  in  $[0, 1/a_1)$ , and it follows that

$$\lim_{t \rightarrow 1/a_1} \frac{X(t)}{|X(t)|_F} = T \lim_{t \rightarrow 1/a_1} \frac{\Lambda(t)}{|\Lambda(t)|_F} T^{-1} = \frac{T e_1 e_1^T T^{-1}}{|T e_1 e_1^T T^{-1}|_F} = \frac{U_1 V_1^T}{|U_1 V_1^T|_F},$$

where  $e_1$  denotes the first standard unit basis vector of  $\mathbb{R}^n$ .  $\square$

*Remark 2.* Theorem 3 implies that social balance is usually not achieved when  $X(0)$  is an arbitrary real initial condition. Indeed, if  $X_0$  has a simple, positive, real eigenvalue  $a_1$ , and if we assume that no entry of the right and left eigenvectors  $U_1$  and  $V_1^T$  are zero (an assumption which is generically satisfied), then in general, up to a permutation of its entries, the sign patterns of  $U_1$  and  $V_1^T$  are:

$$U_1 = \begin{pmatrix} + \\ + \\ - \\ - \end{pmatrix} \text{ and } V_1^T = (+ \quad - \mid + \quad -) \implies U_1 V_1^T = \left( \begin{array}{cc|cc} + & - & + & - \\ + & - & + & - \\ - & + & - & + \\ - & + & - & + \end{array} \right).$$

Then Theorem 1 implies that the normalized state of the system does not become balanced in finite time.

This shows that in general, unless  $X_0$  is normal (so that Theorem 2 and Remark 1 are applicable), we cannot expect that social balance will emerge for system (B1).

### Supplementary Information C: Equation $\dot{X} = XX^T$

Consider

$$\dot{X} = XX^T, X(0) = X_0, \quad (C1)$$

where again, each  $X_{ij}$  denotes the real-valued opinion agent  $i$  has about agent  $j$ . As before, for  $i = j$ , the value of  $X_{ii}$  is interpreted as a measure of self-esteem of agent  $i$ . We can also write the equations entrywise:

$$\dot{X}_{ij} = \sum_k X_{ik} X_{jk}. \quad (C2)$$

In this case, when an agent  $i$  wishes to revise his opinion about agent  $j$ , and talks to a third player  $k$  about  $j$ , agent  $k$  does not report what *he* thinks of  $j$ , but what  $j$  has done unto him, that is  $X_{kj}$ . Alternatively, when an agent  $i$  wishes to adjust his opinion about agent  $j$ ,  $i$  and  $j$  will share their opinion about a third player  $k$ , and if these opinions have the same sign, then agent  $i$  will increase his opinion about agent  $j$ , whereas if these opinions have different signs, agent  $i$  will decrease his opinion about agent  $j$ . The rate of increase or decrease is proportional to the product of the opinions involved, and as before, agent  $i$  adds the terms resulting from gossiping to  $j$  about all other agents in the network.

Notice there is a subtle difference in the interpretation of how information resulting from gossiping is used in models (B1) and (C1). In the former model, when agent  $i$  wants to update his opinion about agent  $j$ , agent  $i$  gossips *about agent  $j$  to all agents in the network*. In the latter model however, agent  $i$  makes the adjustment based on the outcome of gossiping *with agent  $j$  about all agents in the network*. Mathematically, the only difference between the assumptions of model (B1) and (C1) lies in the second piece of information (ii) used to update the opinion  $X_{ij}$ .

These differences force us to revise the concepts of a *balanced triangle* and a *balanced network*:

**Definition 2.** For model (C1), we call a triangle of (not necessarily distinct) agents  $i, j$  and  $k$  *balanced* if

$$X_{ij}X_{ik}X_{jk} > 0.$$

A network is said to be *balanced* if all triangles of agents are balanced.

Despite this revised Definition, it is not hard to see that both Definitions 1 and 2 of a balanced network, are equivalent. To see this, it suffices to simply perform the permutation  $(i, j, k) \leftrightarrow (i, k, j)$ . Henceforth we can and will refer to a balanced network when both equivalent definitions of socially balanced network hold. Recall that the Structure Theorem, Theorem 1, holds for socially balanced networks, and that the basic question in the current context is whether or not the solutions of (C1) evolve towards a state which corresponds to a balanced network. Possibly competing terms of opposite sign in the sum in (C2), show it is not clear what will happen in the long run.

As in the case of model  $\dot{X} = X^2$ , we split up the analysis in two parts. First we consider system (C1) with normal initial condition  $X_0$ , and we shall see that not all initial conditions lead to the emergence of a balanced network in this case, in contrast to the behavior of (B1). Secondly, we will see that for non-normal, generic initial conditions  $X_0$ , we typically do get the emergence of social balance, also contrasting the behavior of (B1).

#### 1. Normal initial condition

We start with an invariance property for system (C1):

**Lemma 10.** The set  $\mathcal{N}$  is invariant for system (C1).

*Proof.* It is easily verified that if  $X$  belongs to  $\mathcal{N}$ , then so does  $XX^T$ , from which the proof follows.  $\square$

The next result implies that we can restrict the analysis of (C1) to one or two-dimensional blocks.

**Lemma 11.** Let  $X_0 \in \mathcal{N}$ , and let  $(U, \Lambda_0)$  be as in Lemma 2. If  $\Lambda(t)$  is the solution to the initial value problem  $\dot{\Lambda} = \Lambda\Lambda^T$ ,  $\Lambda(0) = \Lambda_0$ , then

$$X(t) := U\Lambda(t)U^T,$$

is the solution to (C1).

*Proof.* Note that  $X(0) = U\Lambda_0U^T = X_0$ , as required, and that multiplying  $\dot{\Lambda} = \Lambda\Lambda^T$  by  $U$  and  $U^T$  on the left and right respectively, yields that:

$$\frac{d}{dt}(U\Lambda U^T) = (U\Lambda U^T)(U\Lambda U^T)^T,$$

which expresses that  $X(t) = U\Lambda(t)U^T$  satisfies the equation  $\dot{X} = XX^T$ .  $\square$

This Lemma shows it is sufficient to solve system (C1) in case of scalar  $X$  or in case of a specific,  $2 \times 2$ , normal matrix  $X$ . The scalar case is easy to solve and follows Eq. (B4), so we turn to the  $2 \times 2$  case by considering:

$$\dot{X} = XX^T, \quad X(0) = \begin{pmatrix} \alpha & \beta \\ -\beta & \alpha \end{pmatrix}, \quad \text{where } \beta \neq 0. \quad (\text{C3})$$

We define the angle  $\phi$  as:

$$\phi = \arctan\left(\frac{\alpha}{\beta}\right), \quad \phi \in \left(-\frac{\pi}{2}, \frac{\pi}{2}\right). \quad (\text{C4})$$

**Lemma 12.** Define  $\bar{t}$  as

$$\bar{t} = \frac{\pi}{2\beta} - \frac{\phi}{\beta}. \quad (\text{C5})$$

Then the forward solution  $X(t)$  of (C3) is:

$$X(t) = \begin{pmatrix} \beta \tan(\beta t + \phi) & \beta \\ -\beta & \beta \tan(\beta t + \phi) \end{pmatrix}, \quad t \in [0, \bar{t}). \quad (\text{C6})$$

Moreover,

$$\lim_{t \rightarrow \bar{t}-} X(t) = \begin{pmatrix} +\infty & \beta \\ -\beta & +\infty \end{pmatrix} \quad \text{and} \quad \lim_{t \rightarrow \bar{t}-} \frac{X(t)}{|X(t)|_F} = \frac{\sqrt{2}}{2} I_2.$$

*Proof.* Let

$$X_0 = S_0 + A_0, \quad S_0 = \alpha I_2, \quad A_0 = \begin{pmatrix} 0 & \beta \\ -\beta & 0 \end{pmatrix}. \quad (\text{C7})$$

Then the solution  $X(t)$  of (C3) can be decomposed as  $S(t) + A(t)$ , where

$$\dot{S} = (S + A)(S - A), \quad S(0) = S_0, \quad (\text{C8})$$

$$\dot{A} = 0, \quad A(0) = A_0, \quad (\text{C9})$$

which reduces to

$$\dot{S} = (S + A_0)(S - A_0), \quad S(0) = S_0 \quad (\text{C10})$$

$$A(t) = A_0. \quad (\text{C11})$$

Note that (C10) is a matrix Riccati differential equation with the property that the line

$$\mathcal{L} = \{\alpha I_2 | \alpha \in \mathbb{R}\},$$

is an invariant set under the flow. Therefore it suffices to solve the scalar Riccati differential equation corresponding to the dynamics of the diagonal entries of  $S$ :

$$\dot{s} = s^2 + \beta^2, \quad s(0) = \alpha,$$

whose forward solution is:

$$s(t) = \beta \tan(\beta t + \phi), \quad t \in (0, \bar{t}),$$



where  $\bar{t}$  is given by (C5). Consequently, the forward solution  $X(t)$  of (C3) is given by:

$$X(t) = S(t) + A_0 = \begin{pmatrix} \beta \tan(\beta t + \phi) & \beta \\ -\beta & \beta \tan(\beta t + \phi) \end{pmatrix}, \quad t \in (0, \bar{t}),$$

and thus

$$\lim_{t \rightarrow \bar{t}^-} X(t) = \begin{pmatrix} +\infty & \beta \\ -\beta & +\infty \end{pmatrix} \quad \text{and} \quad \lim_{t \rightarrow \bar{t}^-} \frac{X(t)}{|X(t)|_F} = \frac{X(t)}{\sqrt{2}|\beta \sec(\beta t + \phi)|} = \frac{\sqrt{2}}{2} I_2.$$

□

Combining Lemma 11 and 12 yields our main result:

**Theorem 4.** *Let  $X_0 \in \mathcal{N}$ , and let  $(U, \Lambda_0)$  be as in Lemma 2. Define*

$$\bar{t}_i = \begin{cases} 1/a_i & \text{if } a_i > 0 \\ +\infty & \text{if } a_i \leq 0 \end{cases} \quad \text{for all } i = 1, \dots, k,$$

and

$$\bar{t}_j = \frac{\pi}{2\beta_j} - \frac{\phi_j}{\beta_j} \quad \text{for all } j = 1, \dots, l,$$

where

$$\phi_j = \arctan\left(\frac{\alpha_j}{\beta_j}\right) \in \left(-\frac{\pi}{2}, \frac{\pi}{2}\right) \quad \text{for all } j = 1, \dots, l,$$

and let

$$\bar{t} = \min_{i,j} \{\bar{t}_i, \bar{t}_j\}.$$

Then the forward solution  $X(t)$  of (C1) is defined for  $[0, \bar{t})$ .

If there is a unique  $i^* \in \{1, \dots, k\}$  such that  $\bar{t} = \bar{t}_{i^*}$  is finite, then

$$\lim_{t \rightarrow \bar{t}_{i^*}^-} \frac{X(t)}{|X(t)|_F} = U_{i^*} U_{i^*}^T,$$

where  $U_{i^*}$  is the  $i^*$ th column of  $U$ , an eigenvector corresponding to eigenvalue  $a_{i^*}$  of  $X_0$ .

If there is a unique  $j^* \in \{1, \dots, l\}$  such that  $\bar{t} = \bar{t}_{j^*}$ , then

$$\lim_{t \rightarrow \bar{t}_{j^*}^-} \frac{X(t)}{|X(t)|_F} = \frac{\sqrt{2}}{2} U_{j^*} U_{j^*}^T,$$

where  $U_{j^*}$  is an  $n \times 2$  matrix consisting of the two consecutive columns of  $U$  which correspond to the columns of the  $2 \times 2$  block  $B_{j^*}$  in  $\Lambda_0$ .

*Proof.* Consider the initial value problem:

$$\dot{\Lambda} = \Lambda \Lambda^T, \quad \Lambda(0) = \Lambda_0.$$

By Lemma 12 its solution is given by

$$\Lambda(t) = \begin{pmatrix} \frac{a_1}{1-a_1 t} & \dots & 0 & 0 & \dots & 0 \\ \vdots & \ddots & \vdots & \vdots & \ddots & \vdots \\ 0 & \dots & \frac{a_k}{1-a_k t} & 0 & \dots & 0 \\ 0 & \dots & 0 & X_1(t) & \dots & 0 \\ \vdots & \ddots & \vdots & \vdots & \ddots & \vdots \\ 0 & \dots & 0 & 0 & \dots & X_l(t) \end{pmatrix},$$

where for all  $j = 1, \dots, l$ ,  $X_j(t)$  is given by the  $2 \times 2$  matrix in (C6) with  $\beta$ ,  $\phi$  and  $\bar{t}$  replaced by  $\beta_j$ ,  $\phi_j$  and  $\bar{t}_j$  respectively. This clearly shows that  $\Lambda(t)$  is defined in forward time for  $t$  in  $[0, \bar{t})$ . Since by Lemma 11, the solution of (C1) is given by  $X(t) = U\Lambda(t)U^T$ ,  $X(t)$  is also defined in forward time for  $t$  in  $[0, \bar{t})$ . It follows from (A3) that

$$\frac{X(t)}{|X(t)|_F} = U \frac{\Lambda(t)}{|\Lambda(t)|_F} U^T.$$

If  $i^* \in \{1, \dots, k\}$  is the unique value such that  $\bar{t} = \bar{t}_{i^*}$ , then

$$\lim_{t \rightarrow \bar{t}_{i^*}} \frac{X(t)}{|X(t)|_F} = U \lim_{t \rightarrow \bar{t}_{i^*}} \frac{\Lambda(t)}{|\Lambda(t)|_F} U^T = U e_{i^*} e_{i^*}^T U^T = U_{i^*} U_{i^*}^T,$$

where  $e_{i^*}$  denotes the  $i^*$ th standard unit basis vector of  $\mathbb{R}^n$ .

If  $j^* \in \{1, \dots, l\}$  is the unique value such that  $\bar{t} = \bar{t}_{j^*}$ , then by Lemma 12:

$$\lim_{t \rightarrow \bar{t}_{j^*}} \frac{X(t)}{|X(t)|_F} = U \lim_{t \rightarrow \bar{t}_{j^*}} \frac{\Lambda(t)}{|\Lambda(t)|_F} U^T = \frac{\sqrt{2}}{2} U E_{j^*} U^T = \frac{\sqrt{2}}{2} U_{j^*} U_{j^*}^T,$$

where  $E_{j^*}$  has exactly two non-zero entries equal to 1 on the diagonal positions corresponding to the block  $B_{j^*}$  in  $\Lambda_0$ .  $\square$

*Remark 3.* A particular consequence of Theorem 4 is that if  $X_0$  has a complex pair of eigenvalues, the solution of (C1) always blows up in finite time, even if all real eigenvalues of  $X_0$  are non-positive. Recall that the solution of (B1) blows up in finite time, if and only if  $X_0$  has a positive, real eigenvalue. Another implication of Theorem 4 is that if blow-up occurs, it may be due to a real eigenvalue of  $X_0$ , or to a complex eigenvalue. In contrast, if the solution of (B1) blows up in finite time, it is necessarily due to a positive, real eigenvalue, and never to a complex eigenvalue. When the solution of (C1) blows up because of a positive, real eigenvalue of  $X_0$ , the system will achieve balance, just as in the case of system (B1). If on the other hand, finite time blow up of (C1) is caused by a complex eigenvalue of  $X_0$ , we show that in general one cannot expect to achieve a balanced network. Assume there is a unique  $j^*$  such that:

$$\lim_{t \rightarrow \bar{t}_{j^*}^-} \frac{X(t)}{|X(t)|_F} = \frac{\sqrt{2}}{2} U_{j^*} U_{j^*}^T,$$

Assuming that no entry of  $U_{j^*}$  is zero, the sign pattern of  $U_{j^*} U_{j^*}^T$ , up to a suitable permutation, is given by:

$$\begin{pmatrix} p_1 & q_1 \\ p_2 & -q_2 \\ -p_3 & q_3 \\ -p_4 & -q_4 \end{pmatrix} \begin{pmatrix} p_1^T & p_2^T & -p_3^T & -p_4^T \\ q_1^T & -q_2^T & q_3^T & -q_4^T \end{pmatrix} = \begin{pmatrix} + & ? & ? & - \\ ? & + & - & ? \\ ? & - & + & ? \\ - & ? & ? & + \end{pmatrix},$$

where all  $p_i$  and  $q_i$ ,  $i = 1, \dots, 4$ , are entrywise positive vectors, and where

$$\langle p_1, q_1 \rangle + \langle p_4, q_4 \rangle = \langle p_2, q_2 \rangle + \langle p_3, q_3 \rangle,$$

because  $U$  is an orthogonal matrix. The ? are not entirely arbitrary because  $U_{j^*} U_{j^*}^T$  is a symmetric matrix, but besides that their signs can be arbitrary.

## 2. Generic initial condition

Consider

$$\dot{X} = XX^T, X(0) = X_0, \tag{C12}$$

where  $X$  is a real  $n \times n$  matrix, which is not necessarily normal.

We first decompose the flow (C12) into flows for the symmetric and skew-symmetric parts of  $X$ . Let

$$X = S + A, X_0 = S_0 + A_0,$$

where  $S, S_0 \in \mathcal{S}$  and  $A, A_0 \in \mathcal{A}$  are the unique symmetric and skew-symmetric parts of  $X$  and  $X_0$  respectively. If  $X(t)$  satisfies (C12), then it can be verified that  $S(t)$  and  $A(t)$  satisfy the system:

$$\dot{S} = (S + A)(S - A), \quad S(0) = 0, \quad (\text{C13})$$

$$\dot{A} = 0, \quad A(0) = A_0, \quad (\text{C14})$$

Consequently,  $A(t) = A_0$  for all  $t$ , and thus the skew-symmetric part of the solution  $X(t)$  of (C12) remains constant and equal to  $A_0$ . Throughout this subsection we assume that

$$A_0 \neq 0, \quad (\text{C15})$$

for otherwise  $X(0)$  is symmetric, hence normal, and the results from the previous subsection apply. It follows that we only need to understand the dynamics of the symmetric part:

$$\dot{S} = (S + A_0)(S - A_0), \quad S(0) = S_0. \quad (\text{C16})$$

Then the solution  $X(t)$  to (C12) is given by:

$$X(t) = S(t) + A_0,$$

where  $S(t)$  solves (C16), and in view of (A2), there follows by Pythagoras' Theorem that:

$$|X(t)|_F^2 = |S(t)|_F^2 + |A_0|_F^2,$$

and thus

$$\frac{X(t)}{|X(t)|_F} = \frac{S(t) + A_0}{(|S(t)|_F^2 + |A_0|_F^2)^{\frac{1}{2}}}. \quad (\text{C17})$$

Next we shall derive an explicit expression for the solution  $S(t)$  of (C16). We start by performing a change of variables:

$$\hat{S}(t) = e^{-tA_0} S(t) e^{tA_0}. \quad (\text{C18})$$

This yields the equation:

$$\dot{\hat{S}} = \hat{S}^2 - A_0^2, \quad \hat{S}(0) = S_0. \quad (\text{C19})$$

We perform a further transformation which diagonalizes  $-A_0^2$ : Let  $V$  be an orthogonal matrix such that:

$$-V^T A_0^2 V = \begin{pmatrix} 0 & 0 & \dots & 0 \\ 0 & \omega_1^2 I_2 & \dots & 0 \\ \vdots & \vdots & \ddots & \vdots \\ 0 & 0 & \dots & \omega_k^2 I_k \end{pmatrix} = D^2, \quad \text{where } D := \begin{pmatrix} 0 & 0 & \dots & 0 \\ 0 & \omega_1 I_2 & \dots & 0 \\ \vdots & \vdots & \ddots & \vdots \\ 0 & 0 & \dots & \omega_k I_k \end{pmatrix},$$

where  $k \geq 1$  (because of (C15)) and all  $\omega_j > 0$  without loss of generality. Setting

$$\tilde{S} = V^T \hat{S} V, \quad (\text{C20})$$

and multiplying equation (C19) by  $V$  on the left, and by  $V^T$  on the right, we find that:

$$\dot{\tilde{S}} = \tilde{S}^2 + D^2, \quad \tilde{S}(0) = \tilde{S}_0 := V^T S_0 V. \quad (\text{C21})$$

Notice that this is a matrix Riccati differential equation, a class of equations with specific properties which are briefly reviewed next.

Consider a general matrix Riccati differential equation:

$$\dot{S} = SMS - SL - L^T S + N, \quad M = M^T, \quad N = N^T, \quad L \text{ arbitrary}, \quad (\text{C22})$$

defined on  $\mathcal{S}$ . Associated to this equation is a linear system

$$\begin{pmatrix} \dot{P} \\ \dot{Q} \end{pmatrix} = H \begin{pmatrix} P \\ Q \end{pmatrix}, \quad H := \begin{pmatrix} L & -M \\ N & -L^T \end{pmatrix}, \quad (\text{C23})$$

where  $H$  is a Hamiltonian matrix, i.e.  $J_{2n}H = (J_nH)^T$  holds, where  $J_{2n}$  is the matrix:

$$J_{2n} = \begin{pmatrix} 0 & I_n \\ -I_n & 0 \end{pmatrix}.$$

The following fact is well-known.

**Lemma 13.** *Let  $\begin{pmatrix} P(t) \\ Q(t) \end{pmatrix}$  be a solution of (C23). Then, provided that  $P(t)$  is non-singular,*

$$S(t) = Q(t)P(t)^{-1}, \quad (\text{C24})$$

*is a solution of (C22). Conversely, if  $S(t)$  is a solution of (C22), then there exists a solution  $\begin{pmatrix} P(t) \\ Q(t) \end{pmatrix}$  of (C23) such that (C24) holds, provided that  $P(t)$  is non-singular.*

*Proof.* Taking derivatives in  $S(t)P(t) = Q(t)$  yields that  $\dot{S} = (\dot{Q} - S\dot{P})P^{-1}$ , and using (C23),

$$\dot{S} = (NP - L^TQ - S(LP - MQ))P^{-1} = N - L^TS - SL + SMS,$$

showing that  $S(t)$  solves (C22). For the converse, let  $S(t)$  be a solution of (C22). Let  $\begin{pmatrix} P(t) \\ Q(t) \end{pmatrix}$  with  $\begin{pmatrix} P(0) \\ Q(0) \end{pmatrix} = \begin{pmatrix} I_n \\ S(0) \end{pmatrix}$  be the solution of (C23). Then

$$\begin{aligned} \frac{d}{dt} (Q(t)P^{-1}(t)) &= \dot{Q}P^{-1} - QP^{-1}\dot{P}P^{-1} = (NP - L^TQ)P^{-1} - QP^{-1}(LP - MQ)P^{-1} \\ &= (QP^{-1})M(QP^{-1}) - (QP^{-1})L - L^T(QP^{-1}) + N, \end{aligned}$$

which implies that  $QP^{-1}$  is a solution to (C22). Since  $S(0) = Q(0)P^{-1}(0)$ , it follows from uniqueness of solutions that  $S(t) = Q(t)P^{-1}(t)$ .  $\square$

In other words, in principle we can solve the nonlinear equation (C22) by first solving the linear system (C23), and then use formula (C24) to determine the solution of (C22).

We carry this out for our particular Riccati equation (C21) which is of the form (C22) if

$$M = I_n, \quad L = 0, \quad N = D^2.$$

The corresponding Hamiltonian is:

$$H = \begin{pmatrix} 0 & -I_n \\ D^2 & 0 \end{pmatrix}.$$

We partition  $D$  in singular and non-singular parts:

$$D = \begin{pmatrix} 0 & 0 \\ 0 & \tilde{D} \end{pmatrix}, \quad \text{where } \tilde{D} := \begin{pmatrix} \omega_1 I_2 & \dots & 0 \\ \vdots & \ddots & \vdots \\ 0 & \dots & \omega_k I_2 \end{pmatrix},$$

where  $\tilde{D}$  is positive definite since all  $\omega_j > 0$ . Partitioning  $H$  correspondingly:

$$H = \left( \begin{array}{cc|cc} 0 & 0 & -I_{n-2k} & 0 \\ 0 & 0 & 0 & -I_{2k} \\ \hline 0 & 0 & 0 & 0 \\ 0 & \tilde{D}^2 & 0 & 0 \end{array} \right). \quad (\text{C25})$$

This matrix is then exponentiated to solve system (C23):

$$\begin{pmatrix} P(t) \\ Q(t) \end{pmatrix} = \left( \begin{array}{cc|cc} I_{n-2k} & 0 & -tI_{n-2k} & 0 \\ 0 & c & 0 & -\tilde{D}^{-1}s \\ \hline 0 & 0 & I_{n-2k} & 0 \\ 0 & \tilde{D}s & 0 & c \end{array} \right) \begin{pmatrix} P(0) \\ Q(0) \end{pmatrix},$$

where we have introduced the following notation:

$$s(t) := \begin{pmatrix} \sin(\omega_1 t) I_2 & \dots & 0 \\ \vdots & \ddots & \vdots \\ 0 & \dots & \sin(\omega_k t) I_2 \end{pmatrix} = \sin(\tilde{D}t),$$

and

$$c(t) := \begin{pmatrix} \cos(\omega_1 t) I_2 & \dots & 0 \\ \vdots & \ddots & \vdots \\ 0 & \dots & \cos(\omega_k t) I_2 \end{pmatrix} = \cos(\tilde{D}t).$$

By setting

$$P(0) = I_n, \quad Q(0) = \tilde{S}_0,$$

and using Lemma 13, it follows that the solution of the initial value problem (C21) is given by:

$$\tilde{S}(t) = Q(t)P(t)^{-1}, \quad \begin{pmatrix} P(t) \\ Q(t) \end{pmatrix} = \left( \frac{\begin{pmatrix} I_{n-2k} & 0 \\ 0 & c(t) \end{pmatrix} - \begin{pmatrix} t I_{n-2k} & 0 \\ 0 & \tilde{D}^{-1} s(t) \end{pmatrix} \tilde{S}_0}{\begin{pmatrix} 0 & 0 \\ 0 & \tilde{D} s(t) \end{pmatrix} + \begin{pmatrix} I_{n-2k} & 0 \\ 0 & c(t) \end{pmatrix} \tilde{S}_0} \right), \quad (\text{C26})$$

for all  $t$  for which  $P(t)$  is non-singular. We now make the following assumption:

**Assumption A.** *The matrix  $P(t)$  is non-singular for all  $t$  in  $[0, \bar{t})$ , where  $\bar{t}$  is finite and such that  $s(t)$  is non-singular for all  $t$  in  $(0, \bar{t})$ . Moreover,  $P(\bar{t})$  has rank  $n - 1$ , or equivalently, has a simple eigenvalue at zero.*

Later we will show that this assumption is generically satisfied, and also that

$$t^* = \bar{t}, \quad (\text{C27})$$

where  $[0, t^*)$  is the maximal forward interval of existence of the solution  $\tilde{S}(t)$  of the initial value problem (C21). Consequently,  $\lim_{t \rightarrow \bar{t}} |\tilde{S}(t)|_F = +\infty$ , i.e.  $\bar{t}$  is the blow-up time for the solution  $\tilde{S}(t)$ .

Assuming for the moment that **(A)** is satisfied, back-transformation using (C18) and (C20), yields that the solution  $S(t)$  of (C16) is:

$$S(t) = e^{tA_0} V \tilde{S}(t) V^T e^{-tA_0},$$

which is defined for all  $t$  in  $[0, \bar{t})$ , because  $e^{tA_0} V$  is bounded for all  $t$  (as it is an orthogonal matrix). It follows from (A4) that:

$$\lim_{t \rightarrow \bar{t}} \frac{S(t)}{|S(t)|_F} = e^{\bar{t}A_0} V \left( \lim_{t \rightarrow \bar{t}} \frac{\tilde{S}(t)}{|\tilde{S}(t)|_F} \right) V^T e^{-\bar{t}A_0}. \quad (\text{C28})$$

Partitioning  $\tilde{S}_0$  in (C26) as follows:

$$\tilde{S}_0 = \begin{pmatrix} (\tilde{S}_0)_{11} & (\tilde{S}_0)_{12} \\ (\tilde{S}_0)_{12}^T & (\tilde{S}_0)_{22} \end{pmatrix}, \quad \text{with } (\tilde{S}_0)_{11} = (\tilde{S}_0)_{11}^T \text{ and } (\tilde{S}_0)_{22} = (\tilde{S}_0)_{22}^T,$$

we can rewrite  $P(t)$  and  $Q(t)$  on the time interval  $(0, \bar{t})$  as:

$$P(t) = \Delta(t)M(t), \quad \Delta(t) = \begin{pmatrix} t I_{n-2k} & 0 \\ 0 & \tilde{D}^{-1} s(t) \end{pmatrix}, \quad M(t) = \begin{pmatrix} 1/t - (\tilde{S}_0)_{11} & -(\tilde{S}_0)_{12} \\ -(\tilde{S}_0)_{12}^T & \tilde{D} c(t) s^{-1}(t) - (\tilde{S}_0)_{22} \end{pmatrix},$$

and

$$Q(t) = \begin{pmatrix} (\tilde{S}_0)_{11} & (\tilde{S}_0)_{12} \\ c(t)(\tilde{S}_0)_{12}^T & \tilde{D} s(t) + c(t)(\tilde{S}_0)_{22} \end{pmatrix}.$$

Note that the factorization of  $P(t)$  is well-defined on  $(0, \bar{t})$  because by assumption **(A)**, the matrix  $s(t)$  is non-singular in the interval  $(0, \bar{t})$ . Moreover, assumption **(A)** also implies there exists a nonzero vector  $u$  corresponding to the zero eigenvalue of  $M(\bar{t})$ :

$$M(\bar{t})u = 0,$$

and that  $u$  is uniquely defined up to scalar multiplication because the zero eigenvalue is simple. More explicitly, partitioning  $u$  as  $\begin{pmatrix} u_1 \\ u_2 \end{pmatrix}$ , there holds that:

$$\begin{pmatrix} 1/\bar{t} - (\tilde{S}_0)_{11} & -(\tilde{S}_0)_{12} \\ -(\tilde{S}_0)_{12}^T & \tilde{D}c(\bar{t})s^{-1}(\bar{t}) - (\tilde{S}_0)_{22} \end{pmatrix} \begin{pmatrix} u_1 \\ u_2 \end{pmatrix} = \begin{pmatrix} 0 \\ 0 \end{pmatrix}. \quad (C29)$$

Notice that  $M(t)$  is real-analytic on  $(0, +\infty)$ . Hence, it follows from [33] (see also [34, 35]), that there is an orthogonal matrix  $U(t)$ , and a diagonal matrix  $\Lambda(t)$ , both real-analytic on  $(0, +\infty)$ , such that:

$$M(t) = U(t)\Lambda(t)U^T(t), \quad t \in (0, +\infty),$$

and thus

$$M^{-1}(t) = U(t)\Lambda^{-1}(t)U^T(t), \quad t \in (0, \bar{t}),$$

where  $M(t)$  is real-analytic as well, but only on the interval  $(0, \bar{t})$  because  $M(t)$  is only nonsingular for  $t < \bar{t}$ . Returning to (C28), we obtain that:

$$\begin{aligned} \lim_{t \rightarrow \bar{t}} \frac{S(t)}{|S(t)|_F} &= e^{\bar{t}A_0} V \lim_{t \rightarrow \bar{t}} \frac{Q(t)U(t)\Lambda^{-1}(t)U^T(t)\Delta^{-1}(t)}{|Q(t)U(t)\Lambda^{-1}(t)U^T(t)\Delta^{-1}(t)|_F} V^T e^{-\bar{t}A_0} \\ &= e^{\bar{t}A_0} V \frac{Q(\bar{t})uu^T\Delta^{-1}(\bar{t})}{|Q(\bar{t})uu^T\Delta^{-1}(\bar{t})|_F} V^T e^{-\bar{t}A_0}. \end{aligned}$$

Here, we have used the fact that  $M^{-1}(t)$  is positive definite on the interval  $(0, \bar{t})$ , so that its largest eigenvalue (which is simple for all  $t < \bar{t}$  sufficiently close to  $\bar{t}$ , because of assumption **(A)**) approaches  $+\infty$  -and not  $-\infty$ - as  $t \rightarrow \bar{t}$ . To see this, note that  $M(t)$  is positive definite for all  $t > 0$  sufficiently small. Moreover,  $M(t)$  is non-singular on  $(0, \bar{t})$  since by assumption **(A)**,  $P(t)$  is non-singular on  $(0, \bar{t})$ , and because  $M(t) = \Delta^{-1}(t)P(t)$  (it is clear from its definition and assumption **(A)** that  $\Delta(t)$  is non-singular on  $(0, \bar{t})$  as well). Consequently, the smallest eigenvalue of  $M(t)$  remains positive in  $(0, \bar{t})$ , and approaches zero as  $t \rightarrow \bar{t}$ . This implies that the largest eigenvalue of  $M^{-1}(t)$  is positive on  $(0, \bar{t})$ , and approaches  $+\infty$  as  $t \rightarrow \bar{t}$ , as claimed.

Note that upon multiplication of the second row in (C29) by  $c(\bar{t})$ , we obtain that:

$$Q(\bar{t})u = \begin{pmatrix} (\tilde{S}_0)_{11} & (\tilde{S}_0)_{12} \\ c(\bar{t})(\tilde{S}_0)_{12}^T & \tilde{D}s(\bar{t}) + c(\bar{t})(\tilde{S}_0)_{22} \end{pmatrix} \begin{pmatrix} u_1 \\ u_2 \end{pmatrix} = \begin{pmatrix} (1/\bar{t})u_1 \\ \tilde{D}s^{-1}(\bar{t})u_2 \end{pmatrix} = \Delta^{-1}(\bar{t})u,$$

from which follows that

$$\lim_{t \rightarrow \bar{t}} \frac{S(t)}{|S(t)|_F} = e^{\bar{t}A_0} V \frac{(\Delta^{-1}(\bar{t})u)(\Delta^{-1}(\bar{t})u)^T}{|(\Delta^{-1}(\bar{t})u)(\Delta^{-1}(\bar{t})u)^T|_F} V^T e^{-\bar{t}A_0}. \quad (C30)$$

Plugging (C30) into (C17), we finally arrive at the following result, which implies that system (C12) evolves to a socially balanced state (in normalized sense) when  $t \rightarrow \bar{t}$ :

**Proposition 1.** *Suppose that assumptions (C15) and **(A)** hold. Then the solution  $X(t)$  of (C12) satisfies:*

$$\lim_{t \rightarrow \bar{t}} \frac{X(t)}{|X(t)|_F} = \frac{(e^{\bar{t}A_0} V \Delta^{-1}(\bar{t})u)(e^{\bar{t}A_0} V \Delta^{-1}(\bar{t})u)^T}{|(\Delta^{-1}(\bar{t})u)(\Delta^{-1}(\bar{t})u)^T|_F}.$$

a. *Generically, assumption **(A)** holds, and (C27) holds as well*

There are two aspects to assumption **(A)**:

1. The matrix  $P(t)$  is nonsingular in the interval  $[0, \bar{t})$ , but singular at some finite  $\bar{t}$  such that:

$$\bar{t} < \min_{j=1, \dots, k} \frac{\pi}{\omega_j}. \quad (C31)$$

2.  $P(\bar{t})$  has a simple zero eigenvalue.

To deal with the first item, suppose that the solution  $\tilde{S}(t)$  of (C21) is defined for all  $t \in [0, t^*)$  for some finite positive  $t^*$ . By Lemma 13, there exist  $P(t)$  and  $Q(t)$  such that  $\tilde{S}(t) = Q(t)P^{-1}(t)$ , where  $P(t)$  and  $Q(t)$  are components of the solution of system (C23) with  $H$  defined in (C25). Then necessarily  $\bar{t} \leq t^*$ . Thus, if we can show that  $t^* < \min_j \pi/\omega_j$ , then (C31) holds. To show that  $t^* < \min_j \pi/\omega_j$ , we rely on a particular property of matrix Riccati differential equations (C22): their solutions preserve the order generated by the cone of non-negative symmetric matrices, see [36]. More precisely, if  $S_1(t)$  and  $S_2(t)$  are solutions of (C22), and if

$$S_1(0) \preceq S_2(0),$$

then

$$S_1(t) \preceq S_2(t),$$

for all  $t \geq 0$  for which both solutions are defined. Here, the partial order notation  $S_1(t) \preceq S_2(t)$  means that the difference  $S_2(t) - S_1(t)$  is a positive semi-definite matrix.

We apply this to equation (C21) with

$$\tilde{S}_1(0) = \alpha_{\min} I_n \text{ and } \tilde{S}_2(0) = \tilde{S}(0),$$

where we choose  $\alpha_{\min}$  as the smallest eigenvalue of  $\tilde{S}(0)$  (or equivalently, of  $S(0) = S_0$ , since  $\tilde{S}(0) = V^T S_0 V$ ), so that clearly:

$$\tilde{S}_1(0) \preceq \tilde{S}_2(0).$$

Consequently, by the monotonicity property of system (C21), it follows that:

$$\tilde{S}_1(t) \preceq \tilde{S}(t), \quad (C32)$$

as long as both solutions are defined. We can calculate the blow-up time  $t_1^*$  of  $\tilde{S}_1(t)$  explicitly, and then it follows from (C32) that  $t^* \leq t_1^*$ , where  $t^*$  is the blow-up time of  $\tilde{S}(t)$ . Indeed, equations of system (C21) decouple for an initial condition of the form  $\alpha_{\min} I_n$ , and the resulting scalar equations are scalar Riccati equations which we have solved before. The blow-up time for  $\tilde{S}_1(t)$  is given by:

$$t_1^* = \begin{cases} \min_{j=1, \dots, k} \left( \frac{\pi}{2\omega_j} - \frac{\phi_j}{\omega_j} \right), & \phi_j := \arctan \left( \frac{\alpha_{\min}}{\omega_j} \right) \in \left( -\frac{\pi}{2}, \frac{\pi}{2} \right), \text{ if } \alpha_{\min} \leq 0 \\ \min_{j=1, \dots, k} \left( \frac{1}{\alpha_{\min}} \cdot \frac{\pi}{2\omega_j} - \frac{\phi_j}{\omega_j} \right), & \phi_j := \arctan \left( \frac{\alpha_{\min}}{\omega_j} \right) \in \left( -\frac{\pi}{2}, \frac{\pi}{2} \right), \text{ if } \alpha_{\min} > 0 \end{cases}.$$

Notice that for all  $j = 1, \dots, k$ , there holds that

$$\frac{\pi}{2\omega_j} - \frac{\phi_j}{\omega_j} < \frac{\pi}{\omega_j},$$

because by definition,  $\phi_j/\omega_j \in (-\pi/(2\omega_j), \pi/(2\omega_j))$ . Consequently,

$$\bar{t} \leq t^* \leq t_1^* < \min_{j=1, \dots, k} \frac{\pi}{\omega_j},$$

which establishes (C31). In other words, we have shown that the first item in assumption **(A)** is always satisfied.

The second item in assumption **(A)** may fail, but holds for generic initial conditions as we show next. For this we first point out that the derivative of each eigenvalue of  $M(t)$  is a strictly decreasing function in the interval  $(0, \bar{t})$ , independently of the value of the matrix  $\tilde{S}_0$ . Indeed, the derivative of eigenvalue  $\lambda_j(t)$  of  $M(t)$  equals (see [33]) :

$$\dot{\lambda}_j(t) = u_j(t)^t \dot{M}(t) u_j(t) = u_j(t)^t \begin{pmatrix} -1/t^2 & 0 \\ 0 & -\tilde{D}^2 s^{-2}(t) \end{pmatrix} u_j(t),$$

where  $u_j(t)$  is the normalized eigenvector of  $M(t)$  corresponding to  $\lambda_j(t)$ , and which is analytic in the considered interval. Since  $\dot{M}(t)$  is negative definite in that interval,  $\dot{\lambda}_j(t)$  is also negative and hence all eigenvalues of  $M(t)$  are strictly decreasing functions of  $t$  in that interval. Suppose now that  $M(t)$  has a multiple eigenvalue 0 at  $t = \bar{t}$ , then  $M(t)$  is positive semi-definite since  $\bar{t}$  is the first singular point of  $M(t)$  and the eigenvalues are decreasing function of  $t$ . If we now choose a positive semi-definite  $\Delta_{\tilde{S}_0}$  of nullity 1, such that  $M(\bar{t}) + \Delta_{\tilde{S}_0}$  also has nullity 1, then the perturbed initial condition  $(\tilde{S}_0)_p = \tilde{S}_0 - \Delta_{\tilde{S}_0}$  yields the perturbed solution  $\tilde{S}_p(t)$  which can be factored as  $Q_p(t)P_p^{-1}(t)$ , and where  $P_p(t) = \Delta(t)M_p(t)$  (note that  $\Delta(t)$  remains the same as before the perturbation) for  $M_p(t) = M(t) + \Delta_{\tilde{S}_0}$  which now has a single root at the same minimal value  $\bar{t}$ . To construct such a matrix  $\Delta_{\tilde{S}_0}$  is simple since the only condition it needs to satisfy is that  $M(\bar{t})$  and  $\Delta_{\tilde{S}_0}$  have a common null vector. Those degrees of freedom show that the second item in assumption **(A)** is indeed generic.

Now that we have established that **(A)** generically holds, we show that (C27) is satisfied also. The proof is by contradiction. Earlier, we have shown that  $\bar{t} \leq t^*$ . Thus, if we suppose that (C27) fails, then necessarily  $\bar{t} < t^*$ . This implies that although  $P(\bar{t})$  is singular, the solution  $\tilde{S}(t)$  exists for  $t = \bar{t}$ . Our goal is to show that  $\lim_{t \rightarrow \bar{t}} |\tilde{S}(t)|_F = +\infty$ , which yields the desired contradiction.

We first claim the following:

$$\text{If } u \neq 0 \text{ and } P(\bar{t})u = 0, \text{ then } Q(\bar{t})u \neq 0. \quad (\text{C33})$$

Indeed, if this were not the case, then there would exist some vector  $\bar{u} \neq 0$  such that:

$$\begin{pmatrix} P(\bar{t}) \\ Q(\bar{t}) \end{pmatrix} \bar{u} = \begin{pmatrix} 0 \\ 0 \end{pmatrix}.$$

On the other hand,  $P(t)$  and  $Q(t)$  are components of the matrix product:

$$\begin{pmatrix} P(t) \\ Q(t) \end{pmatrix} = e^{tH} \begin{pmatrix} I_n \\ \tilde{S}_0 \end{pmatrix},$$

where  $H$  is defined in (C25). Multiplying the latter in  $t = \bar{t}$  by  $\bar{u}$ , and using the previous expression, it follows from the invertibility of  $e^{\bar{t}H}$  that  $\bar{u} = 0$ , a contradiction. This establishes (C33).

In the previous section, we factored  $P(t)$ :

$$P(t) = \Delta(t)M(t).$$

Since  $P(t)$  is non-singular on  $[0, \bar{t})$ , and singular at  $\bar{t}$ , it follows from (C31) and the definition of  $\Delta(t)$ , that  $M(t)$  is non-singular (and, in fact, positive definite as shown in the previous section) on  $(0, \bar{t})$ , and singular at  $\bar{t}$  as well. Therefore, since  $M(t)$  is symmetric and real-analytic, it follows from [33] that we can find a positive and real-analytic scalar function  $\epsilon(t)$ , and a real-analytic unit vector  $u(t)$  such that:

$$M(t)u(t) = \epsilon(t)u(t), \quad \epsilon(t) > 0 \text{ on } (0, \bar{t}), \quad \epsilon(\bar{t}) = 0, \quad |u(t)|_2 = 1,$$

where  $|\cdot|_2$  denotes the Euclidean norm. In particular,  $M(\bar{t})u(\bar{t}) = 0$ , and since  $\Delta(\bar{t})$  is non-singular, it follows that

$$P(\bar{t})u(\bar{t}) = 0.$$

Then (C33) implies that

$$Q(\bar{t})u(\bar{t}) \neq 0.$$

Define the real-analytic unit vector

$$v(t) = \frac{\Delta(t)u(t)}{|\Delta(t)u(t)|_2}, \quad t \in (0, \bar{t}),$$

and calculate

$$\begin{aligned} \lim_{t \rightarrow \bar{t}} |\tilde{S}(t)v(t)|_2 &= \lim_{t \rightarrow \bar{t}} |Q(t)P^{-1}(t)v(t)|_2 \\ &= \lim_{t \rightarrow \bar{t}} \frac{|Q(t)M^{-1}(t)\Delta^{-1}(t)(\Delta(t)u(t))|_2}{|\Delta(t)u(t)|_2} \\ &= \frac{|Q(\bar{t})u(\bar{t})|_2}{|\Delta(\bar{t})u(\bar{t})|_2} \lim_{t \rightarrow \bar{t}} \frac{1}{\epsilon(t)} \\ &= +\infty. \end{aligned}$$



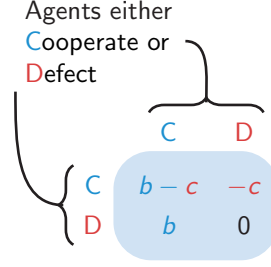


FIG. 5. Prisoner's Dilemma. Both players have the option to either Cooperate or Defect. Whenever an agent cooperates, it costs him  $c = 1$  while his partners receives a benefit  $b > c$ , leading to the indicated payoffs.

Since for any real  $n \times n$  matrix  $A$ , and for any unit vector  $x$  (i.e.  $|x|_2 = 1$ ) holds that  $|Ax|_2 \leq |A|_F$ , it follows that:

$$\lim_{t \rightarrow \bar{t}} |\tilde{S}(t)|_F = +\infty.$$

This yields the sought-after contradiction.

By combining Proposition 1 and the results in this subsection, we have proved the main result concerning the generic emergence of balance for solutions of system (C12).

**Theorem 5.** *There exists a dense set of initial conditions  $X_0$  in  $\mathbb{R}^{n \times n}$  such that the corresponding solution  $X(t)$  of (C12) satisfies:*

$$\lim_{t \rightarrow \bar{t}} \frac{X(t)}{|X(t)|_F} = \frac{(e^{\bar{t}A_0} V \Delta^{-1}(\bar{t})u)(e^{\bar{t}A_0} V \Delta^{-1}(\bar{t})u)^T}{|(\Delta^{-1}(\bar{t})u)(\Delta^{-1}(\bar{t})u)^T|_F}.$$

*Proof.* The set of initial conditions  $X_0$  for which condition (C15) and assumption **(A)** holds is dense in  $\mathbb{R}^{n \times n}$ .  $\square$

#### Supplementary Information D: Evolutionary Dynamics

The evolution of cooperation is an intriguing problem, which touches upon various issues in the social sciences as well as in biology. In general, the problem is that if defection allows individuals to gain more, why then do individuals cooperate? Various mechanisms for explaining the evolution of cooperation have been suggested [37], such as kin selection [38, 39], reciprocity [40] or group selection [41]. Humans have a tendency however to also cooperate in contexts beyond kin, group or repeated interactions. It is believed that some form of indirect reciprocity can explain the breadth of human cooperation [8]. Whereas in direct reciprocity the favor is returned by the interaction partner, in indirect reciprocity the favor is returned by somebody else, which usually involves some reputation. It has been theorized that such a mechanism could even form the basis of morality [42]. Additionally, reputation (and the fear of losing reputation) seems to play an important role in maintaining social norms [10, 13, 43].

The usual idea in indirect reciprocity is that all agents have some reputation, which changes based on their actions. Agents are assumed to interact in a Prisoner's Dilemma type of game (Fig. 5) and can either cooperate or defect. Originally, the so-called image scoring strategy [44] involved an integer reputation between  $-5$  and  $5$ , and agents would cooperate if this reputation would be higher than a certain threshold. Shortly after, it was argued that a different strategy, known as the standing strategy, should actually perform better [45], although experiments showed people tend to prefer the simpler image scoring strategy [46]. Moreover, it should be of interest to agents not to cooperate necessarily with those of a good reputation, but to maintain their own good reputation, so that others will cooperate with them. This led to more systematic studies of how different reputation schemes would perform [24, 25, 47]. In this context, reputations are often (though not necessarily) binary (either Good or Bad), and can follow various possible schemes, such as the standing strategy or the image scoring strategy. It was shown that out of the 2,048 possible strategies in this framework, eight strategies perform particularly well, known as “the leading eight”. These strategies maintain a high level of cooperation, and effectively deal with invading defectors.

However, these reputations are usually considered as objective. That is, all agents know the reputation  $X_j$  of some agent  $j$ , and all agents have the same view of agent  $j$ . Private reputations—so that we have  $X_{ij}$ , the reputation of  $j$  in the eyes of  $i$ —have usually been considered by allowing a part of the population to “observe” an interaction, and

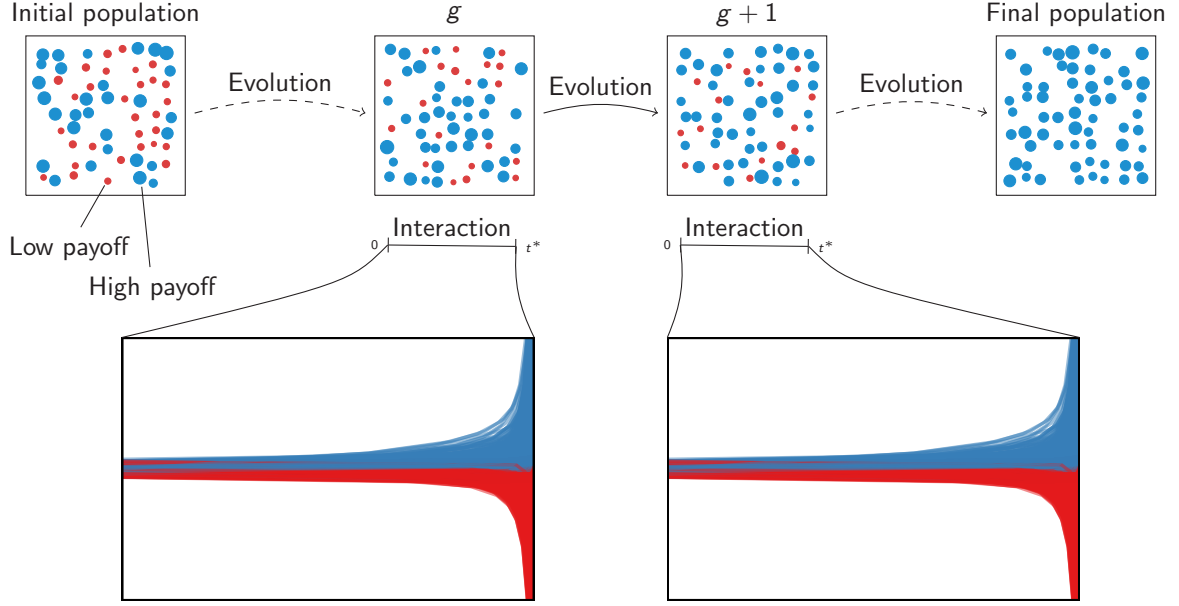


FIG. 6. Schematic of the evolutionary dynamics. The different generations are illustrated in the top row, with type A in red, and type B in blue. The size of the disks signify the payoff. Each agent is reproduced according to this payoff to obtain the population at the next generation  $g+1$ . During each generation agents interact according to one of the models of social balance. Agents of type A use  $\dot{X}_A = X_A X$  dynamics, while agents of type B use  $\dot{X}_B = X_B X^T$ . In this case, the population evolves towards a state of only type B agents, due to their higher reproductivity. At that point the simulation terminates, because new species cannot enter as there is no mutation.

update the reputation accordingly. If too few agents are allowed to “observe” an interaction, the reputations  $X_{ij}$  tend to become uncorrelated and incoherent. This makes reputation unreliable for deciding whether to cooperate or defect. The central question thus becomes how to model private reputations such that they remain coherent and reliable for deciding whether to cooperate or not.

Dynamical models of social balance might provide an answer to this question. Although it allows to have private reputations—that is  $X_{ij}$ —the dynamics could also lead to some coherence in the form of social balance. In addition, it models more explicitly the gossiping process, commonly suggested to be the foundation upon which reputations are forged. In addition, gossiping seems a more natural alternative than “observing”, and was found to enhance cooperation in various experiments [28–30].

## 1. Simulations

In the simulations we perform, the dynamics consist of two parts: (1) the interaction dynamics within each generation; and (2) the dynamics prescribing how the population evolves from generation to generation. This has been schematically summarized in Fig. 6. The interaction dynamics are based on the models analyzed earlier (i.e.  $\dot{X} = X^2$  and  $\dot{X} = X X^T$ ). Agents will decide to either cooperate or defect based on the reputation  $X_{ij}(t)$ , and the payoff  $P_i$  for each agent will be calculated according to the Prisoners’ Dilemma type of game illustrated in Fig. 5. This will be discussed in more detail in the next subsection on interaction dynamics. Once the interaction is finished, the population is evolved according to the payoff. This will be detailed in the subsection on evolutionary dynamics.

### a. Interaction dynamics

We have three possible types of agents in our simulations:

**Type A:** uses  $\dot{X} = X^2$  dynamics,

**Type B:** uses  $\dot{X} = X X^T$  dynamics, and

**Defectors:** who have a trivial reputation dynamics  $\dot{X} = 0$ , with negative constant reputations.

Within each generation  $g$ , all agents are assumed to interact, and for type  $A$  and  $B$  a specific reputation dynamics take place. We can decompose the reputation matrix  $X(t)$  into three parts:

$$X(t) = \begin{pmatrix} X_A(t) \\ X_B(t) \\ X_D(t) \end{pmatrix}, \quad (D1)$$

where  $X_A(t)$  are the reputations of all agents in the eyes of agents of type A,  $X_B(t)$  for type B and  $X_D(t)$  for defectors. The initial reputations  $X_A(0)$  and  $X_B(0)$  are initialized randomly from a Gaussian distribution with mean zero and standard deviation one. The initial reputation for  $X_D(0)$  will be set to a fixed negative value. For the results displayed here we have used  $X_D(0) = -10$ , but results remain by and large the same when varying this parameter, as long as it remains sufficiently negative. As stated, the dynamics for type A and type B remain as in the main paper, while  $X_D$  will not change:

$$\dot{X}_A = X_A X, \quad (D2)$$

$$\dot{X}_B = X_B X^T, \quad (D3)$$

$$\dot{X}_D = 0. \quad (D4)$$

These reputations blow-up at some time  $t^*$ , and we numerically integrate these differential equations until this blow-up time. Hence, the agents are assumed to interact for a duration of  $t^*$ .

Since we are dealing with continuous dynamics in this paper, we assume all agents are involved in infinitesimally short games at each time instance  $t$ . Each agent  $i$  may choose to either cooperate or defect with another agent  $j$ , and this decision may vary from one agent to the next. For agents of type A and type B the decision to cooperate is based on the reputation: they defect whenever  $X_{ij}(t) \leq 0$  and cooperate whenever  $X_{ij}(t) > 0$ . We define the cooperation matrix  $C(t)$  accordingly

$$C_{ij}(t) = \begin{cases} 0 & \text{if } X_{ij} \leq 0 \\ 1 & \text{if } X_{ij} > 0 \end{cases} \quad (D5)$$

Defectors will simply always defect. Whenever an agent  $i$  cooperates with  $j$  the latter receives a payoff of  $b$  at a cost of  $c$  to agent  $i$ , as illustrated in Fig. 5. We integrate this payoff over all infinitesimally short games from time 0 to time  $t^*$ , which can be represented as

$$P(g) = \frac{1}{n} \int_0^{t^*} bC(t)^T e - cC(t) e dt, \quad (D6)$$

for a certain generation  $g$ , where  $e = (1, \dots, 1)$  the vector of all ones. Each element  $P_i(g)$  contains the payoff for an individual agent  $i$ . The normalization by  $1/n$  is included so that payoffs do not grow too large.

In this context of cooperation the difference between the two models becomes quite clear, as illustrated in Fig. 7. Suppose an agent  $k$  cooperates with an agent  $j$  ( $X_{kj} > 0$ ) while  $j$  defects ( $X_{jk} \leq 0$ ). Also suppose that  $i$  is friends with both  $j$  and  $k$  ( $X_{ik}, X_{ij} > 0$ ). In the earlier model ( $\dot{X} = X^2$ ) this interaction would have a positive effect on  $X_{ij}$ , because  $X_{ik}X_{kj} > 0$ , and a negative effect on  $k$ , because  $X_{ij}X_{jk} \leq 0$ . Hence, the reputation of the one who defects increases, while the reputation of the one who cooperates decreases. Our model ( $\dot{X} = XX^T$ ) behaves more sensibly in this case, and  $X_{ij}$  would decrease and  $X_{ik}$  would increase. Indeed, the model  $\dot{X} = XX^T$  is consistent with one of the leading eight strategies, while  $\dot{X} = X^2$  is not.

#### b. Evolutionary dynamics

Now that the interaction dynamics for each generation is known, we have to specify how the generations themselves evolve. For all results we use  $n = 60$  agents, which stays constant throughout the evolution. We consider four different schemes for initializing the first generation:

	$n_A(0)$	$n_B(0)$	$n_D(0)$
1) Type A vs Type B	30	30	-
2) Type A vs Defectors	30	-	30
3) Type B vs Defectors	-	30	30
4) Type A,B and Defectors	20	20	20

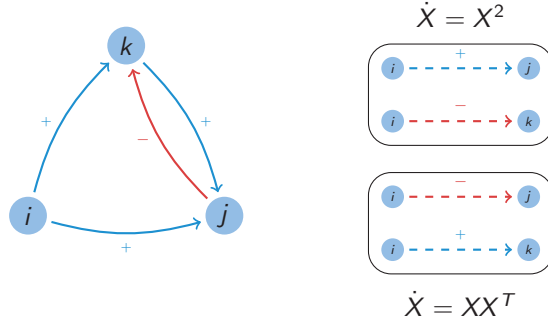


FIG. 7. Difference between  $\dot{X} = X^2$  and  $\dot{X} = XX^T$ . In the context of cooperation, the difference becomes quite clear. When the situation is as indicated on the left, where  $+$  indicates cooperation, and  $-$  indicates defection, it will have the indicated effect on the right. Here,  $k$  and  $j$  are assumed to interact, whereafter  $i$  updates his opinion of  $k$  and  $j$ . In  $\dot{X} = X^2$ , even though  $j$  has defected and  $k$  is considered a friend, the relationship between  $i$  and  $j$  will actually improve. In  $\dot{X} = XX^T$  the exact opposite will happen, which in this case makes more sense.

Here  $n_A(0), n_B(0)$  and  $n_D(0)$  are respectively the number of agents of type A, type B and defectors in the first generation. The results for the first three scenarios are reported in the main text, and results for the fourth scenario are provided in the next section. We use the vector  $T_i(g) \in \{A, B, D\}$  to denote the type of agent  $i$  in generation  $g$ , so that  $T_i(g) = A$  if agent  $i$  is a type A player,  $T_i(g) = B$  for a type B player, and  $T_i(g) = D$  for a defector.

These agents interact according to the interaction dynamics described in the previous subsection. We thus obtain a payoff  $P_i(g)$  for each agent, which we will use for evolving the population. The general idea is that the higher the payoff  $P_i(g)$ , the more chances an individual agent  $i$  has of reproduction. The payoff  $P_i(g)$  can thus be thought of to represent some fitness. In classical wording, this corresponds to the “survival of the fittest”.

We will keep the population constant at  $n = 60$ , and simply choose  $n = 60$  new agents according to their payoff for the next generation. This can be thought of as choosing 60 times one of the 60 agents in the old generation for reproduction. Let  $\phi_i$  denote the probability that an agent is selected for reproduction, which we define as

$$\phi_i = \frac{e^{\beta P_i(g)}}{\sum_i e^{\beta P_i(g)}}. \quad (D7)$$

This is the Boltzmann probability distribution, where  $\beta$  represents a selective pressure. This scheme is often used in various fields such as evolutionary computation [48], machine learning [49], and discrete choice theory [50]. This evolutionary mechanism can be seen as a Wright-Fisher process [51] with fitnesses  $e^{\beta P_i(g)}$ . It is well known that this process converges faster than a Moran birth-death process, since it essentially takes  $n$  time steps in a Moran process to reproduce the effect of one time step in a Wright-Fisher process [51]. Because of the high computational costs (solving repeatedly a non-linear system of differential equations of size  $n^2 = 3600$ ), this process is preferable.

Higher  $\beta$  signifies higher selective pressure, and leads to a higher reproduction of those with a high payoff, and in the case that  $\beta \rightarrow \infty$  only those with the maximum payoff reproduce. This corresponds to a tougher selection criteria for reproduction, and in the limit indeed corresponds to survival of *only* the fittest, since agents with a lesser payoff are never selected for reproduction. On the other hand, for  $\beta \rightarrow 0$  this tends to the uniform distribution  $\phi_i = 1/n$ , where payoffs no longer play any role. We have used  $\beta = 1$  for the results in the main text, but have also simulated for high selective pressure ( $\beta = 5$ ) and low selective pressure ( $\beta = 0.5$ ).

Since we are only interested in the number of agents of a certain type, we can also gather all payoff for the same types of agents, and write

$$\Phi_q = \sum_{i: T_i(g)=q} \phi_i, \quad (D8)$$

where  $q \in \{A, B, D\}$  represents the type of agent. The probability to select a type A agent, a type B agent or a defector is then respectively  $\Phi_A$ ,  $\Phi_B$  and  $\Phi_D$ . In the next generation, the probability that agent  $i$  is of a specific type  $q$  can then be written as

$$\Pr(T_i(g+1) = q) = \Phi_q. \quad (D9)$$

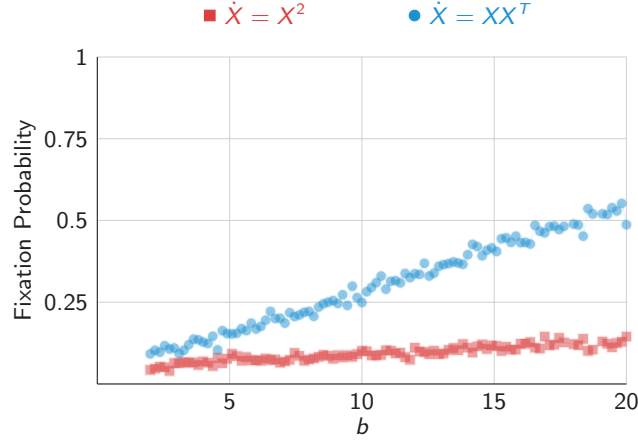


FIG. 8. Results including type A, B and defectors.

Since we draw a random sample of  $n$  iid elements, the probability we draw  $k_A$ ,  $k_B$  and  $k_D$  agents, is multinomially distributed,

$$\Pr(n_A(g+1) = k_A, n_B(g+1) = k_B, n_D(g+1) = k_D) = \frac{n!}{k_A!k_B!k_D!} \Phi_A^{k_A} \Phi_B^{k_B} \Phi_D^{k_D} \quad (\text{D10})$$

The expected number of agents in the next generation  $g+1$  is then  $\mathbb{E}[n_q(g+1)] = \Phi_q n$ , although the actual number of agents may of course vary.

We stop the simulation whenever one of the types becomes fixated in the population. With *fixation* we mean that all other types have gone extinct, and only a single type remains. For example, for the first scenario we simulate until either  $n_A(g) = 60$  or  $n_B(g) = 60$  for some generation  $g$ . Because we include no mutation rates, only agents that are in the population can reproduce. If a type has become fixated, there are only agents of a single type left, so there can be no further evolution, and that type has said to have “won” that round. If no type has become fixated after 1,000 generations, we terminate the simulation and count as winner the most frequent type. This almost never happens, and the simulation usually stops after a relatively small number of generations.

Normally, if neither type has an evolutionary advantage (i.e. they are evolutionary neutral), the chance of becoming fixated in the population equals the fraction of that type in the initial population. Assuming types are evolutionary neutral implies their payoff is the same, and that the probabilities  $\phi_i = 1/n$ . The probability that type A becomes fixated in the population is then  $\Phi_A = n_A(0)/n$ , and similarly so for the other types. For example, if (as in the first scenario) type A and type B are initially present with  $n_A = 30$  and  $n_B = 30$  and neither type has an evolutionary advantage, both types have a probability of  $1/2$  to become fixated. This is also known as genetic drift (there is no selection), and is well known from the analysis of the Wright-Fisher model [51]. Concluding: if a type wins more often than how often it was initially present, it is said to have an evolutionary advantage.

In total, we repeat this process 1,000 times for the results in the main text, and for the low ( $\beta = 0.5$ ) and high ( $\beta = 5$ ) selective pressure 100 times. This means that we run the evolutionary dynamics until one of the types has become fixated, and we record which type has “won”. After that, we again start from the first generation, and run until fixation, and repeat this. Finally, we calculate how many rounds a type has “won” compared to the total number of rounds, which provides the fixation probability.

## 2. Results

In addition to the results reported in the main text (scenarios 1–3), we also obtained results for populations initialized with type A, type B and defectors (scenario 4). These results are largely the same as for one of the types against defectors (scenario 2 and 3). A small difference is that type A obtains a small advantage, because it can benefit from type B defeating the defectors. These results are reported in Fig. 8.

The results for the different selective pressures are reported in Fig. 9. A higher selective pressure leads to a higher evolutionary advantage for type B, as could be expected. A lower selective pressure levels the playing field, and allows

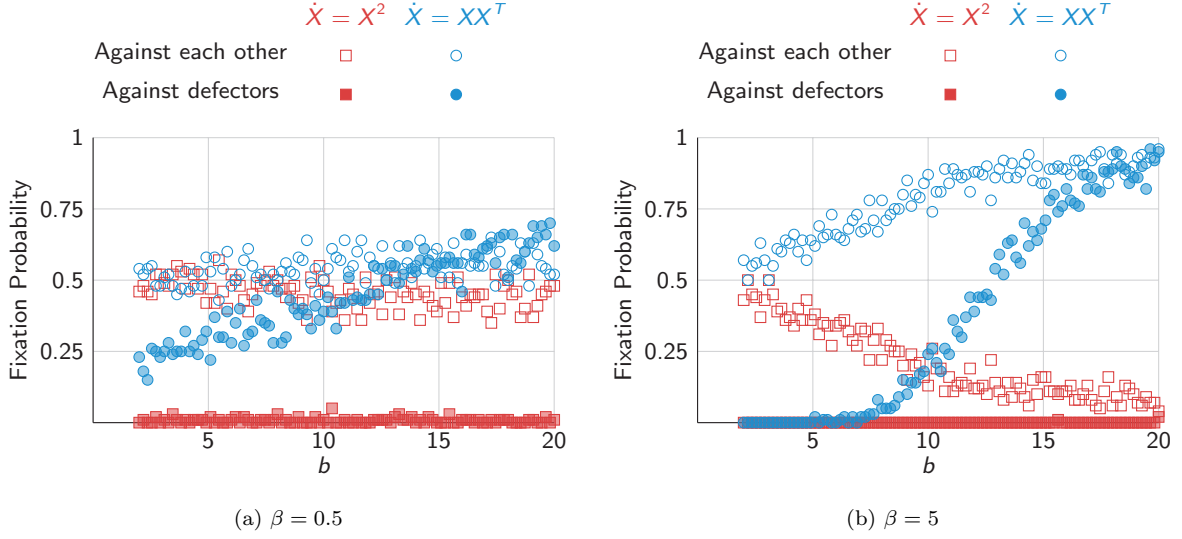


FIG. 9. Results different intensities of selection.

type A to survive almost as frequently as type B, although still somewhat less frequently. The performance against defectors however remains largely unchanged for type A, and they are still unable to survive against defectors. For type B, they tend to win more frequently for low benefits  $b$  for low selective pressure, while for higher benefit  $b$  the high selective pressure allows them to thrive. This is probably due to the relatively slim evolutionary advantage of defectors versus type B for low  $b$ , while the advantage of type B players is quite substantial at high  $b$ .