

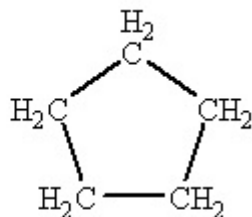
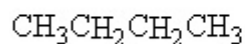
CH 223 Worksheet 9

1. The addition of HCl to an alkene produces 2-chloropropane. What is the alkene?

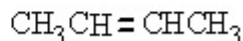
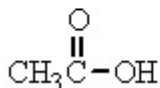
2. When cyclopropane is treated with HI, 1-iodopropane is formed. A similar type of reaction does not occur with cyclopentane or cyclohexane. How do you account for the reactivity of cyclopropane?

3. Which of the following molecules is unsaturated?

(a)



(c)

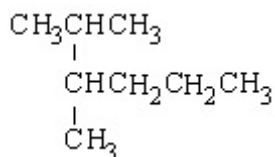


4. What are the characteristic hybrid orbitals employed by (a) carbon in an alkane, (b) carbon in a double bond in an alkene, (c) carbon in the benzene ring, (d) carbon in a triple bond in an alkyne?

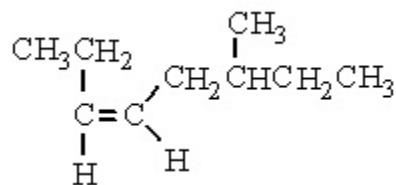
5. Using condensed structural formulas, write a balanced chemical equation for the addition reaction of 2,4-dimethyl-2-pentene with bromine.

6. Give IUPAC names for the following:

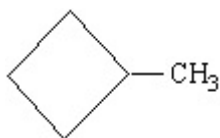
(a)



(b)



(c)



(d)

